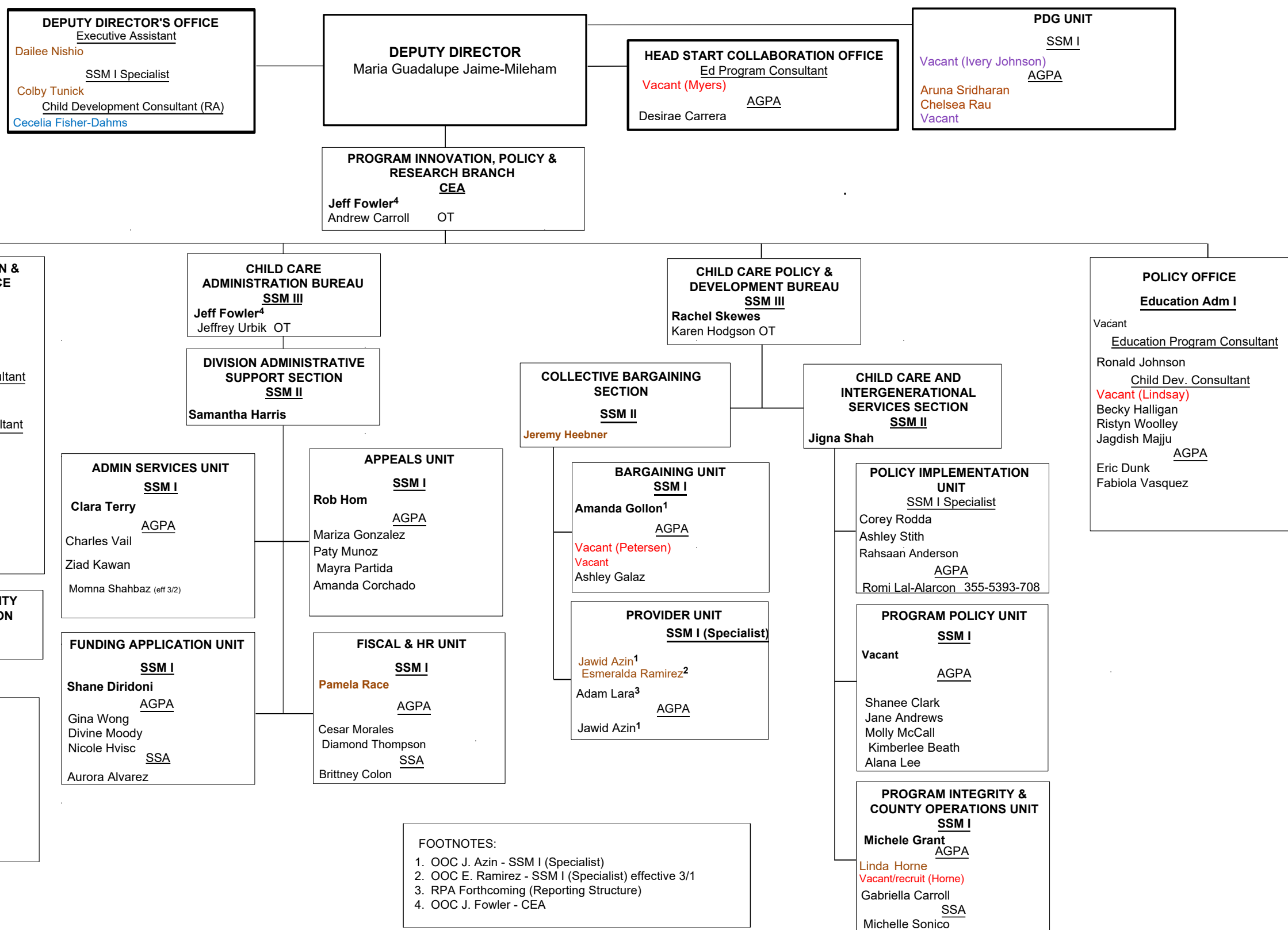


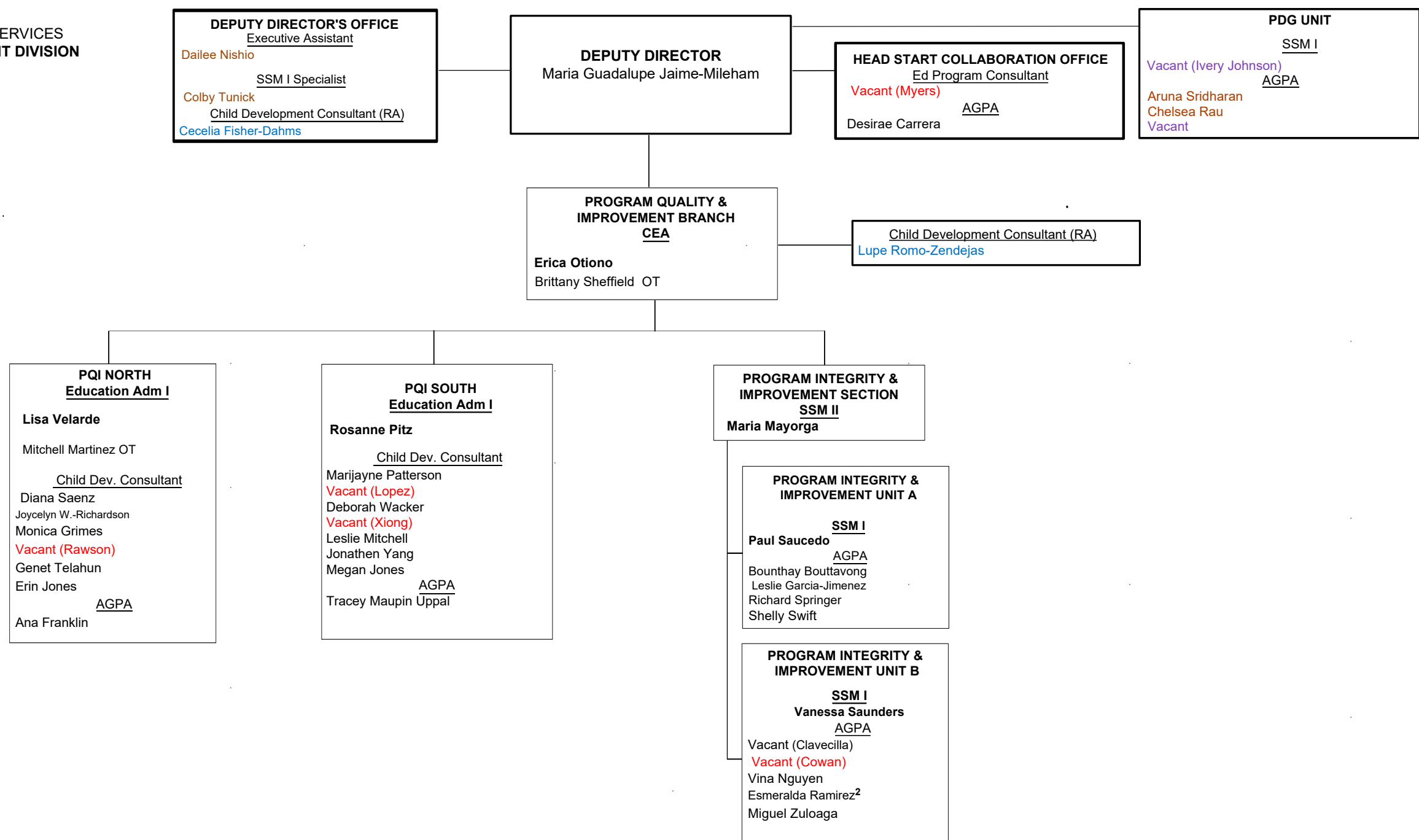
March 1-31 2023
(page 1 of 2)



FOOTNOTES:
1. OOC J. Azin - SSM I (Specialist)
2. OOC E. Ramirez - SSM I (Specialist) effective 3/1
3. RPA Forthcoming (Reporting Structure)
4. OOC J. Fowler - CEA

March 1-31
(page 2 of 2)

CURRENT



APPROVED:

Lupe Jaime-Mileham, Deputy Director

**Child Care Policy and Development Bureau
County Assignments
November 2022**

Analyst	County Assignments	Subject Matter Expertise
Jane Andrews Jane.Andrews@dss.ca.gov	El Dorado Humboldt Lassen Napa Sacramento Sierra Yuba Kings Sonoma	Public Records Act Accessibility Statewide Verification Hub
Shanee Clark Shanee.Clark@dss.ca.gov	Amador Contra Costa Los Angeles Plumas Mendocino Mono San Joaquin Trinity	CWDA Emergency Child Care Bridge for Foster Children Contracts
Linda Horne Linda.Horne@dss.ca.gov	Butte Colusa Madera Riverside San Bernardino San Francisco San Mateo Santa Clara	TrustLine/ Guardian Health and Safety liaison CCL Liaison CalWORKs CC Bureau Liaison - Stage One and Bridge webpages
Alana Lee Alana.Lee@dss.ca.gov	Calaveras Fresno Imperial Inyo Merced Monterey Sutter Ventura	Regional Market Rates Rates Accessibility

<p>Molly McCall Molly.McCall@dss.ca.gov</p>	<p>-</p>	<p>Emergency Child Care Bridge for Foster Children CaISPARK/Brilliant Beginnings Statewide Verification Hub QCC Liaison</p>
<p>Michelle Sonico Michelle.Sonico@dss.ca.gov</p>	<p>Del Norte Glenn Orange Shasta Santa Cruz San Luis Obispo Stanislaus Tuolumne</p>	<p>Child Care Coordinators List Legislative Coordinator CCDBG trainings and webinars</p>
<p>Vacant (please send questions to Amanda Gollon)</p>	<p>-</p>	<p>Bargaining/JLMC SPR CalHR and CCPU Coordination Interagency Workgroup Coordination</p>
<p>Kimberlee Beath Kimberlee.Beath@dss.ca.gov</p>	<p>All County questions related to the Emergency Child Care Bridge for Foster Children</p>	<p>Emergency Child Care Bridge for Foster Children Trauma Informed Care and Practices Liaison between CFSD and CCDD</p>
<p>Gabriella Carroll Gabriella.Carroll@dss.ca.gov)</p>	<p>Alpine Marin Mariposa Modoc Nevada San Benito San Diego Santa Barbara Solano</p>	<p>Immediate and Continuous Eligibility CCDBG</p>
<p>Jawid Azin Jawid.Azin@dss.ca.gov</p>	<p>Alameda Kern Lake Placer Siskiyou Tehama Tulare</p>	<p>SAWS Forms Budget/Title XX</p>

	Yolo	
--	------	--

Child Care Coordinator's List (February 2023)

COUNTY	CHILD CARE COORDINATOR, COUNTY DEFINITION OF "STABLE", AND CONSORTIA TYPE	STAGE 1 ADMINISTRATION	STAGE 2 & 3 ADMINISTRATION	RESOURCE & REFERRAL	BRIDGE PROGRAM
ALAMEDA	<p>Alameda County Social Services Agency, Workforce and Benefits Administration 24100 Amador St., 6th floor Hayward, CA 94544</p> <p>Phan Fong, Program Specialist (510) 259-3849 Phan.Fong@acgov.org</p> <p>Definition of Stable: When the previously aided adult is no longer receiving CalWORKs cash assistance for at least 6 months.</p> <p>Consortia Type: CalWIN</p>	<p>Community Child Care Council (4Cs) of Alameda County 22351 City Center Drive, Suite 200 Hayward, CA 94541 (510) 582-2182 (APP)</p> <p>Paulene McCarthy Child Care Payment Programs Director Phone: (510) 736-2727 paulenep@4c-alameda.org</p> <p>Sally Chou Payment Program Manager Phone: (510) 736-2736 sallyc@4c-alameda.org</p> <p>Hively 111 Myrtle Street Suite 102 Oakland, CA 94607 510-568-0306</p>	<p>Community Child Care Council (4Cs) of Alameda County 22351 City Center Drive, Suite 200 Hayward, CA 94541 (510) 582-2182</p> <p>Hively 6601 Owens Drive Suite 100 Pleasanton, CA 94588 (510) 568-3582</p> <p>Bananas 5232 Claremont Avenue Oakland, CA 94618 (510) 653-7853</p> <p>The Davis Street Community Center, Inc. 3081 Teagarden Street San Leandro, CA 94577 (510) 347-4620</p>	<p>Community Child Care Council (4Cs) of Alameda County 22351 City Center Drive, Suite 200 Hayward, CA 94541 (510) 582-2182</p> <p>Bananas 5232 Claremont Avenue Oakland, CA 94618 (510) 658-0381</p> <p>Hively 6601 Owens Drive Suite 100 Pleasanton, CA 94588 (510) 568-0306</p>	<p>Alameda County Social Services Agency, Children and Family Services 24100 Amador Street Hayward, CA 94544 <i>(multiple office locations)</i></p> <p>Primary County Contact Zandra Washington DCFS Management Analyst (510) 268-2756 washz@ac.org</p> <p>Secondary County Contact Erika Odhiambo Program Financial Specialist (510) 506-2284 Erika.Odhiambo@acgov.org</p> <p>Resource and Referral (R&R) Primary Bridge Contact Maria Hassell (510) 658-7353 x120 maria@bananasbunch.org</p> <p>Navigator Heather Lang Family Services Manager (510) 658-7353 x131 heather@bananasbunch.org</p> <p>Navigator & TIC Trainer Jocelyne Vasquez</p>
ALAMEDA		Hively			

Child Care Coordinator's List (February 2023)

ALAMEDA		<p>111 Myrtle Street Suite 102 Oakland, CA 94607 (APP)</p> <p>James Chang, Chief Financial Officer (CFO) 925-364-0132 (cell) jchang@behively.org</p> <p>Helen Fulgado, Interim Finance Director 925-417-8733 helen.fulgado@behively.org</p> <p>Mona Attia-Shirk, Director of Alternative Payment Programs Phone: 925-417- 8733 Fax: 925-730-4942 mshirk@behively.org</p>			<p>(510) 658-7353 x114 jocelyne@bananasbunch.org Voucher/Navigator/TIC Trainer Kym Johnson (510) 658-7353 x129 kym@bananasbunch.org</p> <p>Voucher Michelle Luong (510) 658-7353 x157 Michelle@bananasbunch.org</p> <p>Director of Client Services and Public Policy Eric Peterson (510) 658-7353 x222 eric@bananasbunch.org</p> <p>Director of Finance Cate Ejjed (510) 658-7353 x186 cate@bananasbunch.org</p> <p>Primary Bridge Contact Renee Herzfeld (510) 736-0095 reneeh@4c-alameda.org</p> <p>Payment Program Manager Sally Chou (510) 584-3128 sallyc@4c-alameda.org</p> <p>Navigator/TIC Trainer Charita Bradshaw</p>
---------	--	--	--	--	---

Child Care Coordinator's List (February 2023)

					<p>(510) 736-2798 charitab@4c-alameda.org Director of Finance Jay Perry (510) 736-0777 jayp@4c-alameda.org</p> <p>Hively (R&R) 7901 Stoneridge Drive, Suite 150 Pleasanton CA 94588</p> <p>Primary Bridge Contact Mona Attia-Shirk (925) 417-8733 mshirk@behively.org</p> <p>Voucher/Navigator Yvonne Stillitano (925) 249-3918 ystillitano@behively.org</p> <p>Trauma-Informed Care (TIC) Director of Community Services and Education Candy Duperrior (925) 417-8733 cduperrior@behively.org</p>
ALPINE	Alpine County Health and Human Services 75 A Diamond Valley Road Markleeville, CA 96120	Catalyst Community Heather Della-Ripa 1029 Takela Dr #1 South Lake Tahoe, CA 96150 (APP)	Catalyst Community Heather Della-Ripa 1029 Takela Dr #1 South Lake Tahoe, CA 96150 (APP)	Catalyst Community Heather Della-Ripa 1029 Takela Dr #1 South Lake Tahoe, CA 96150 (APP)	<i>Alpine County currently not participating in the Bridge Program.</i>
ALPINE	Gabriel Chavarin ICW III (530) 694-1335 (530) 694-2252 (Fax)	Tina Barna, Director (530) 541-5848	Tina Barna, Director (530) 541-5848	Tina Barna, Director (530) 541-5848	

Child Care Coordinator's List (February 2023)

	<p>gchavarin@alpinecounty.ca.gov</p> <p>Erin Dobyys, Deputy Director edobyys@alpinecountyc.a.gov</p> <p>**Alpine County does not have a definition of stable</p> <p>Consortia Type: C-IV</p>	<p>Tbarna@catalystcomm.org</p>	<p>Tbarna@catalystcom m.org</p>	<p>Tbarna@catalystco mm.org</p>	
AMADOR	<p>Amador County Dept of Social Services 10877 Conductor Blvd Suite 200 Sutter Creek, CA 95685</p> <p>Judy Brown, Employment and Training Supervisor (209) 223 6550 (209) 257 0242 (Fax) jbrown@amadorgov.org</p>	<p>The Resource Connection 8085 Highway 26, Suite G Mokelumne Hill, CA 95245 209-754-1075 (APP)</p> <p>Alicia Roman, Subsidy Coordinator ARoman@trcac.org</p>	<p>The Resource Connection 8085 Highway 26, Suite G Mokelumne Hill, CA 95245 209-754-1075</p> <p>Alicia Roman, Subsidy Coordinator ARoman@trcac.org</p>	<p>The Resource Connection 8085 Highway 26, Suite G Mokelumne Hill, CA 95245 209-754-1075</p> <p>Sheri Noble, R&R Director Snoble@trcac.org</p>	<p><i>County currently not participating in the Bridge Program. Amador county plans to opt-in in the FY 2023.</i></p>
AMADOR	<p>Definition of Stable: The participation of at least six months in an assigned Welfare-to-</p>				

Child Care Coordinator's List (February 2023)

	<p>Work activity and or employment and making satisfactory progress and attendance; or off of cash aid.</p> <p>Consortia Type: C-IV</p>				
BUTTE	<p>Butte County CalWORKs Employment Services P.O. Box 1649 Oroville, CA 95965</p> <p>Ken MacKell (530) 879-3528 (530) 879-3468 (Fax) kmackell@buttecounty.net</p> <p>Cristi Roach, Program Manager (530) 552-6565 (530) 879-3468 (Fax) Croach@buttecounty.net</p>	<p>Valley Oak Children's Services 3120 Cohasset Rd. #6 Chico, CA 95973 (APP)</p> <p>(530) 895-3572 (800) 345-8627 (530) 895-8524 (Fax)</p> <p>Mindy Brown, Child Care Payment Program Manager (530) 899-4912 mbrown@valleyoakchildren.org www.valleyoakchildren.org</p>	<p>Valley Oak Children's Services 3120 Cohasset Rd. #6 Chico, CA 95973 (APP)</p> <p>(530) 895-3572 (800) 345-8627 (530) 895-8524 (Fax)</p> <p>Mindy Brown, Child Care Payment Program Manager (530) 899-4912 mbrown@valleyoakchildren.org</p>	<p>Valley Oak Children's Services 3120 Cohasset Rd. #6 Chico, CA 95973 (APP)</p> <p>(530) 895-3572 (800) 345-8627 (530) 895-8524 (Fax)</p> <p>Lana Frisby, R&R Manager Lfrisby@valleyoakchildren.org</p>	<p>Butte County Employment & Social Services, Children Services Division 7204 Skyway Paradise, CA 95969 <i>(multiple office locations)</i></p> <p>Primary County Contact Jessica Bennett Program Manager jlbenett@buttecounty.net</p> <p>Secondary County Contact Annaliesa Batts Analyst abatts@buttecounty.net</p> <p>Resource and Referral (R&R) Primary Bridge Contact Mona Kazemi Program Manager (530) 899-4935</p>
BUTTE	<p>Definition of Stable: Meeting Welfare-to-Work program participation requirements in a work</p>				

Child Care Coordinator's List (February 2023)

	<p>or training related activity and making satisfactory progress for three consecutive months.</p> <p>Consortia Type: C-IV</p>				<p>mkademi@valleyoakchildren.org</p> <p>Navigator Shelly Thomson Family Support Specialist (530) 538-2985 sthomson@valleyoakchildren.org</p> <p>Navigator Rebecca Hearndon Family Support Specialist (530) 879-3745 rhearndon@valleyoakchildren.org</p> <p>Trauma-Informed Care (TIC) Lana Frisby Program Manager (530) 899-4917 lphillips@valleyoakchildren.org</p>
CALAVERAS	<p>Calaveras Works and Human Services Agency 509 E. St. Charles Street San Andreas, CA 95249</p> <p>Margo Ilonummi, Staff Services Analyst (209) 754-6545 (209) 754-9049 (Fax) Milonummi@co.calaveras.ca.us</p>	<p>The Resource Connection 8085 Highway 26, Suite G Mokelumne Hill, CA 95245 (209) 754-3048 (APP)</p>	<p>The Resource Connection 8085 Highway 26, Suite G Mokelumne Hill, CA 95245 (209) 754-3048 (APP)</p>	<p>The Resource Connection 8085 Highway 26, Suite G Mokelumne Hill, CA 95245 (209) 754-3048 (APP)</p>	<p><i>Calaveras County is currently not participating in the Bridge Program, however the county plans to opt-in for the FY 2023.</i></p>
CALAVERAS	<p>Definition of Stable: Three months with the same employer.</p> <p>Consortia Type: C-IV</p>	<p>Sheri Noble, Program Director snoble@trcac.org</p>	<p>Sheri Noble, Program Director snoble@trcac.org</p>	<p>Sheri Noble, Program Director snoble@trcac.org</p>	

Child Care Coordinator's List (February 2023)

COLUSA	<p>Colusa County Department of Health & Human Services 251 East Webster Street Colusa, CA 95932</p> <p>Leslie R. Culp, Eligibility & Employment Program Manager (530) 458-0867 (530) 458-0492 (Fax) Leslie.Culp@colusadhhs.org</p> <p>Definition of Stable: A client is making satisfactory progress in his/her Welfare-to-Work activities. Examples include stable employment or good attendance, academic performance and passing grades.</p> <p>Consortia Type:</p>	<p>Colusa County Office of Education 345 5th Street, Suite ABC Colusa, CA 95932 (APP)</p> <p>Alma Villasenor (530) 458-0300 (530) 458-0350 avillasenor@ccoe.net</p>	<p>Colusa County Office of Education 345 5th Street, Suite ABC Colusa, CA 95932</p> <p>Alma Villasenor (530) 458-0300 (530) 458-0350 avillasenor@ccoe.net</p>	<p>Colusa County Office of Education 345 5th Street, Suite ABC Colusa, CA 95932</p> <p>Alma Villasenor (530) 458-0300 (530) 458-0350 avillasenor@ccoe.net</p>	<p>Colusa County Department of Health and Human Services, Child Welfare Services 215 E. Webster Street Colusa, CA 95932 (530) 458-0280 <i>(In-House Administration of the Bridge Program)</i></p> <p>Primary County Contact Donna Dennis CWS Program Manager (530) 458-0290 Donna.Dennis@colusadhhs.org</p> <p>Secondary County Contact Stefanie Schantz Eligibility Program Manager (530) 458-0263 Stefanie.Schantz@colusadhhs.org</p> <p>County Fiscal Contact</p>
COLUSA					

Child Care Coordinator's List (February 2023)

	C-IV				<p>Christine Fusaro Staff Services Manager (530) 458-0870 Christine.Fusaro@colusadhhs.org</p> <p>Primary Bridge Contact Vicki Markss ED Children's Services (530) 458-0350 x10313 vmarkss@ccoe.net</p> <p>Navigator/TIC Trainer Maria Ayala R&R Coordinator (530) 458-0350 x10309 mayala@ccoe.net</p>
CONTRA COSTA	<p>Contra Costa County Employment and Human Services Department 40 Douglas Dr. Martinez, CA 94553</p> <p>Nanci Powers, Program Analyst Stage One Child Care (925) 608-4933 (925) 228-0294 (Fax) npowers@ehsd.cccounty.us</p> <p>Definition of Stable:</p>	<p>Contra Costa County Employment and Human Services Department Workforce Services Bureau 40 Douglas Drive Martinez, CA 94553-4068</p> <p>Nanci Powers, Program Analyst Stage One Child Care (925) 608-4933 (925) 228-0294 (Fax)</p>	<p>Contra Costa County Employment and Human Services Department Community Services Bureau 1470 Civic Court, Suite 200 Concord, CA 94520</p> <p>Nelly Ige, Program Manager Stage Two/CAPP (925) 681-6334 (925) 768-7918 (Cell) nescobar@ehsd.cccounty.us</p>	<p>Contra Costa County Employment and Human Services Department Workforce Services Bureau 40 Douglas Drive Martinez, CA 94553-4068</p> <p>Nanci Powers, Program Analyst (925) 608-4933 npowers@ehsd.cccounty.us</p>	

Child Care Coordinator's List (February 2023)

	<p>A family or adult that is disconnected from CalWORKs assistance.</p> <p>Consortia: CalWIN</p>	<p>npowers@ehsd.cccounty.us</p>	<p>CoCo Kids 1035 Detroit Avenue, Suite 200 Concord, CA 94518-2477 (925) 676-5442 Ext. 3212</p>		
DEL NORTE	<p>Department of Health & Human Services Public Assistance/Employment and Training Branch 880 Northcrest Drive Crescent City, CA 95531</p> <p>Michael Coats, Program Manager (707) 464-3191 ext. 2600 (707) 465-1783 (Fax) mcoats@co.del-norte.ca.us</p> <p>Definition of Stable: The client has been working with the same employer for six months.</p>	<p>Del Norte Child Care Council P.O. Box 1350 Crescent City, CA 95531 (707) 464-8311 Ext. 224 (APP)</p> <p>Tracy McCracken Tracy@dnccc.com</p>	<p>Del Norte Child Care Council P.O. Box 1350 Crescent City, CA 95531 (707) 464-8311 Ext. 224</p> <p>Tracy McCracken Tracy@dnccc.com</p>	<p>Del Norte Child Care Council P.O. Box 1350 Crescent City, CA 95531 (707) 464-8311 Ext. 224</p> <p>Sarah Campbell, Director of Resource and Referral Sarah@dnccc.com</p>	<p><i>Del Norte County is not participating in the Bridge Program.</i></p>
DEL NORTE	<p>Consortia Type: C-IV</p>				

Child Care Coordinator's List (February 2023)

EL DORADO	<p>El Dorado County Health and Human Services Agency 3057 Briw Road Placerville, CA 95667</p> <p>Susan Quinn, Employment and Training Supervisor (530) 642-4862 (530) 626-9060 (Fax) Susan.Quinn@edcgov.us</p> <p>Sherry Whalen, Back-up Support (530) 642-7369 sherry.whalen@edgov.us</p> <p>Definition of Stable: 30 days of employment.</p> <p>Consortia Type: C-IV</p>	<p>El Dorado County Department of Social Service 3057 Briw Road Placerville, CA 95667 (530) 642-4862 (CWD)</p> <p>Susan Quinn, Employment and Training Supervisor (530) 642-4862 (530) 626-9060 (Fax) Susan.Quinn@edcgov.us</p>	<p>Catalyst Community 3161 Cameron Park Drive, Suite 101 Cameron Park, CA 95682 (530) 676-0707</p> <p>1029 Takela Drive, Suite 1 South Lake Tahoe, CA 96150 (530) 541-5848</p> <p>Heather Della Ripa, Child Care Subsidy Manager hdellarippa@catalystcomm.org</p>	<p>Catalyst Community 3161 Cameron Park Drive, Suite 101 Cameron Park, CA 95682 (530) 676-0707</p> <p>1029 Takela Drive, Suite 1 South Lake Tahoe, CA 96150 (530) 541-5848</p> <p>Dana Schmalz, R&R Specialist dschmalz@catalystcomm.org</p>	<p>El Dorado County Health and Human Services Agency, Child Welfare Services 3057 Briw Road, Ste A Placerville, CA 95667 <i>(multiple office locations)</i></p> <p>Primary County Contact Leslie Griffith Assistant Director (530) 642-4842 Leslie.griffith@edcgov.us</p> <p>Secondary County Contact Jamie Monroe Analyst (530) 621-7178 Jamie.monroe@edcgov.us Resource and Referral (R&R) Primary Bridge Contact Heather DellaRipa Subsidy Manager (530) 541-5848 hdellaripa@catalystcomm.org</p> <p>Navigator/TIC Trainer Rebecca Lew Resource and Referral Manager (530) 676-0707 rlew@catalystcomm.org</p> <p>Navigator/TIC Trainer Tina Barna Senior Director</p>
EL DORADO					

Child Care Coordinator's List (February 2023)

					(530) 541-5848 tbarna@catalystcomm.org
FRESNO	<p>Fresno County Department of Social Services 3500 Never Forget Lane, Clovis, CA 93612</p> <p>Kim Desmond, Program Manager (559) 600-3251 desmok@fresnocountyca.gov</p> <p>Kirsten Rocha, Program Supervisor (559) 600-3296 vrocha@fresnocountyca.gov</p>	<p>Fresno County Department of Social Services 3500 Never Forget Lane, Clovis, CA 93612 (559) 600-2300 (CWD)</p> <p>Kim Desmond, Program Manager (559) 600-3251 desmok@fresnocountyca.gov</p>	<p>Supportive Services, Inc. 5090 N. West Avenue Fresno, CA 93711 (559) 230-2030 (559) 230-2051 (Fax)</p> <p>Children's Services Network 1911 N. Helm Avenue Fresno, CA 93727-1614 (559) 456-1100 (Reception) (559) 456-8195 (FIND Care) (559) 475-7266 (Fax)</p>	<p>Children's Services Network 1911 N. Helm Avenue Fresno, CA 93727-1614 (559) 456-1100 (Reception) (559) 456-8195 (FIND Care) (559) 475-7266 (Fax)</p> <p>Vanessa Lopez, Program Manager vanessal@cvcns.org</p>	<p>Fresno County Department of Social Services, Child Welfare Services 380 W. Ashlan Ave. Clovis, CA 93612</p> <p>Primary County Contact Elizabeth Guerrero Program Manager (559) 600-2102 guerrea@co.fresno.ca.us</p> <p>Secondary County Contact Janya Tyler Social Work Supervisor (559) 600-6651 bakarj@fresnocountyca.us</p>
FRESNO	<p>Christine Mendez, Social Services Program Supervisor (559) 600-3701 (559) 600-3705 (Fax) cmendez@fresnocountyca.gov</p> <p>Definition of Stable: When clients are no</p>	<p>Kirsten Rocha, Program Supervisor (559) 600-3296 vrocha@fresnocountyca.gov</p>	<p>Silvia Casillas, AP Specialist silviac@cvcns.org</p>		<p>Fiscal County Contact Grace Geo (559) 600-2866 ggeo@fresnocountyca.gov</p> <p>Data County Contact Hillary Bolger Staff Analyst (559) 600-2330 hbolger@fresnocountyca.gov</p>

Child Care Coordinator's List (February 2023)

FRESNO	<p>longer eligible for Stage One services</p> <p>Consortia Type: CalWIN</p>				<p>Primary Bridge Contact Marco Jimenez Executive Director (559) 256-0972 marcoj@cvcsn.org</p> <p>Navigator/TIC Trainer Vanessa Lopez FIND Care Program Manager (559) 256-0954 vanessal@cvcsn.org</p> <p>Navigator Michelle Canales FIND CARE Program Assistant Manager (559) 456-8195 michellec@cvcsn.org</p> <p>Navigator Eva Lopez (559) 456-8195 eval@cvcsn.org</p> <p>Trauma-Informed Care Trainer Patricia Gonzalez R&R Specialist (559) 456-8195 patriciag@cvcsn.org</p>
GLENN	<p>Glenn County Health and Human Services Agency 420 E Laurel Street Willows, CA 95988</p>	<p>Glenn County Health & Human Services Agency 420 E Laurel Willows, CA 95988</p>	<p>Glenn County Health & Human Services Agency 420 E Laurel Willows, CA 95988</p>	<p>Glenn County Resource and Referral and AP Program 676 E. Walker Street</p>	<p>Glenn County Health & Human Services Agency, Child & Youth Services 420 E Laurel Street Willows, CA 95988 (multiple office locations)</p>

Child Care Coordinator's List (February 2023)

GLENN	<p>Janelle Kelly, Child Care Liaison (530)934-1538 (530)934-6521 jkelly@countyofglenn.net</p> <p>Definition of Stable: When the client becomes employed full-time and retains employment for at least 30 days.</p> <p>Consortia Type: C-IV</p>	<p>(530) 934-6514 (CWD)</p> <p>Glenn County Office of Education Arné Stanfield astanfield@glenncoe.org</p> <p>Joie Owen, Family Services Division Manager (530) 865 1267 ext. 2203 jowen@glenncoe.org</p>	<p>(530) 934-6514</p> <p>Glenn County Office of Education Arné Stanfield astanfield@glenncoe.org</p> <p>Joie Owen, Family Services Division Manager (530) 865 1267 Ext. 2203 jowen@glenncoe.org</p>	<p>Orland, CA 95963 (530) 865 1118</p> <p>Sarah Grijalva, Child Care Resource Supervisor sgrijalva@glenncoe.org</p>	<p>Primary County Contact Matt Doyle Supervisor RFA (530) 934-1522 mduoye@countyofglenn.net</p> <p>Secondary County Contact Steve Thalken CWS Program Manager (530) 934-1438 sthalken@countyofglenn.net</p> <p>Resource and Referral (R&R) Primary Bridge Contact Sarah Grijalva R&R Supervisor (530) 865-1118 sgrijalva@glenncoe.org</p> <p>Voucher/Navigator Consuelo Valencia Case Manager and Support Specialist (530) 865-1118 cvalencia@glenncoe.org</p> <p>Trauma-Informed Care Trainer Kara Mckinney Provider Support Specialist (530) 865-1118 kmckinney@glenncoe.org</p> <p>Fiscal Bridge Contact Joie Owen Family Services Division Manager (530) 865-1145 jowen@glenncoe.org</p>
HUMBOLDT	<p>Department of Health and Human Services – Social Services Branch –</p>	<p>Changing Tides Family Services 2259 Myrtle Avenue</p>	<p>Changing Tides Family Services 2259 Myrtle Avenue</p>	<p>Changing Tides Family Services 2259 Myrtle Avenue</p>	<p>Department of Health and Human Services, Child Welfare Services 2440 6th Street</p>

Child Care Coordinator's List (February 2023)

<p>HUMBOLDT</p>	<p>Welfare to Work Employment Training Division 929 Koster Street Eureka, CA 95501 Ari Chandler, Staff Services Analyst and CalWORKs Child Care Coordinator achandler@co.humboldt.ca.us</p> <p>Ryan Bishop, Program Manager (707) 269-4136 (707) 268-2798 (Fax) rbishop@co.humboldt.ca.us</p> <p>Definition of Stable: The point in time when a recipient's long-term activity is progressing smoothly and reliable child care services are in place. • Stability can refer to the parent utilizing the same provider over a significant period of time. • Stability can also refer to a client who is not experiencing significant barriers to participation</p>	<p>Eureka CA 95501 (APP)</p> <p>Kerry Venegas, Executive Director 707-444-8293 KVenegas@changingtidesfs.org</p> <p>Jeanine Cañedo- Moncrief, Deputy Director of Early Learning and Care JCanedo-Moncrief@changingtidesfs.org</p> <p>Kellie Farrell, Child Care Services Director KFarrell@changingtidesfs.org</p>	<p>Eureka CA 95501 Kerry Venegas, Executive Director 707-444-8293 KVenegas@changingtidesfs.org</p> <p>Jeanine Cañedo- Moncrief, Deputy Director of Early Learning and Care JCanedo-Moncrief@changingtidesfs.org</p> <p>Kellie Farrell, Child Care Services Director KFarrell@changingtidesfs.org</p>	<p>Eureka CA 95501 Kerry Venegas, Executive Director 707-444-8293 KVenegas@changingtidesfs.org</p> <p>Jeanine Cañedo- Moncrief, Deputy Director of Early Learning and Care JCanedo-Moncrief@changingtidesfs.org</p> <p>Kellie Farrell, Child Care Services Director KFarrell@changingtidesfs.org</p>	<p>Eureka, CA 95501 Primary County Contact Erin Nixon CWS, Staff Services Analyst (707) 388-0221 enixon@co.humboldt.ca.us</p> <p>Secondary County Contact Kimberly Schneider CWS, Program Manager (707) 388-6707 KSchneider@co.humboldt.ca.us</p> <p>Fiscal, Staff Services Manager Olivia Wilder (707) 441-5421 owilder@co.humboldt.ca.us</p> <p>Primary Bridge Contact Marai Solis (707) 444-8293 msolis@changingtidesfs.org Subsidy Oversight Kerry Venegas (707) 444-8293 kvenegas@changingtidesfs.org</p> <p>Navigator/TIC Trainer Marai Solis (707) 444-8293 msolis@changingtidesfs.org</p> <p>Voucher Jeanine Canedo-Moncrief (707) 444-8293 Jcanedo-moncrief@changingtidesfs.org</p>
-----------------	---	---	--	--	---

Child Care Coordinator's List (February 2023)

	Consortia Type: C-IV				
IMPERIAL	<p>Imperial County Department of Social Services 2995 South 4th St, Suite 103 El Centro, CA 92243</p> <p>Araceli Lopez, Program Manager (760) 336-4099 (760) 337-5783 (Fax) aracelilopez@co.imperial.ca.us</p>	<p>Imperial County Department of Social Services 2995 South 4th Street, Suite 105 El Centro, CA 92243 (CWD)</p> <p>Araceli Lopez, Program Manager (760) 336-4099 (760) 337-5783 (Fax) aracelilopez@co.imperial.ca.us</p>	<p>Imperial County Child Development Services 1398 Sperber Road El Centro, CA 92243 (760) 312-6431</p> <p>Emma Sanchez, Assistant Director of Budgets and Accounting esanchez@icoe.org</p>	<p>Early Care and Education Program 1398 Sperber Rd. El Centro CA 92243 (760) 312-6442</p> <p>Martha White, Clerical Assistant II for the Early Childhood Education Program mwhite@icoe.org 760-312-6544</p>	<p>Imperial County Department of Social Services, Children and Family Services 2995 South 4th St, Suite 103 El Centro, CA 92243</p> <p>Primary County Contact Sonia Villafana Primary Manager (760) 482-2007 soniavillafana@co.imperial.ca.us</p> <p>Deputy Director Renee Robles (760) 337-7859 ReneeRobles@co.imperial.ca.us</p> <p>Fiscal Laura Carrillo, Deputy Director (760) 337-5173 lauracarrillo@co.imperial.ca.us</p> <p>Primary Bridge Contact Vivian Yacopi, ECEP Coordinator (760) 312-6604 Vivian.yacopi@icoe.org</p> <p>Voucher Emma Sanchez Assistant Director-ECEP (760) 312-6496 esanchez@icoe.org</p>
IMPERIAL	<p>Definition of Stable: To have an active welfare to work agreement and/or employment and having the same child care provider for at least three consecutive months.</p> <p>Consortia Type: C-IV</p>				

Child Care Coordinator's List (February 2023)

					<p>Navigator/TIC Trainer Sandy Leon, ECEP Specialist/ TIC & Navigator (760) 312-6563 Sandy.leon@icoe.org</p>
<p>INYO</p>	<p>Inyo County Health and Human Services 920 North Main Street Bishop, CA 93514</p> <p>Morningstar Willis-Wagoner, Human Services Supervisor (760) 872-1394 (760) 872-4950 (Fax) mwagoner@inyocounty.us</p> <p>Definition of Stable: The client is employed, off of cash assistance and has had stable work hours for at least 30 days.</p> <p>Consortia Type:</p>	<p>Inyo County Superintendent of Schools Child Care Connection 164 Grandview Drive Bishop, CA 93514 (APP)</p> <p>(760) 873-5123 Ext. 332</p> <p>Kat Duncan, Administrator kduncan@inyocoe.org</p>	<p>Inyo County Superintendent of Schools Child Care Connection 164 Grandview Drive Bishop, CA 93514 (APP)</p> <p>(760) 873-5123 Ext. 332</p> <p>Kat Duncan, Administrator kduncan@inyocoe.org</p>	<p>Inyo County Superintendent of Schools Child Care Connection 164 Grandview Drive Bishop, CA 93514 (APP)</p> <p>(760) 873-5123 Ext. 332</p> <p>Kat Duncan, Administrator kduncan@inyocoe.org</p>	<p><i>Inyo County is not participating in the Bridge Program.</i></p>

Child Care Coordinator's List (February 2023)

	C-IV				
KERN	<p>Kern County Dept. of Human Services P.O. Box 511 Bakersfield, CA 93302</p> <p>Shannon Oastler, Human Services Assistant Program Manager (661) 873-2822 (661) 873-2896 (Fax) oastler@kerndhs.com</p>	<p>Kern County Superintendent of Schools Community Connection for Child Care 2000 K Street #110 Bakersfield, CA 93301 (APP) (661) 861-5200</p>	<p>Kern County Superintendent of Schools Community Connection for Child Care 2000 K Street #110 Bakersfield, CA 93301 (661) 861-5200</p> <p>Ana Sanchez, Program Manager 661-861-5313 ansanchez@kern.org</p>	<p>Kern County Superintendent of Schools Community Connection for Child Care 2000 K Street #110 Bakersfield, CA 93301 (661) 861-5200</p> <p>Ana Sanchez, Program Manager 661-861-5313 ansanchez@kern.org</p>	<p>Kern County Department of Human Services 100 E. California Ave, Bakersfield, CA 93307</p> <p>Primary County Contact Abraham Maliyekkal Admin Coordinator (661) 868-1458 maliyea@kerndhs.com</p> <p>Assistant Program Director Pam Townsend (661) 872-2339 townsep@kerndhs.com</p> <p>Fiscal Harold Hunter Senior Admin & Fiscal Svstems Officer</p>
KERN	<p>Definition of Stable Families are considered stable when the parent(s) and/or guardian(s) of the assistance unit have been identified as:</p>	<p>Ana Sanchez, Program Manager 661-861-5313 ansanchez@kern.org</p> <p>Early Childhood Council of Kern</p>			

Child Care Coordinator's List (February 2023)

	<ul style="list-style-type: none"> • No longer receiving cash aid; or • Employed for at least nine months full-time (30 hours or more per week); or • Employed for at least nine months part-time (less than 30 hours per week) with a combination of another approved CalWORKs activity totaling 30 hours or more per week <p>Consortia Type: C-IV</p>	<p>Kern County Dental Health Network Kern Early Stars 2000 K Street, Suite 110 Bakersfield, CA 93301</p> <p>Cheryl Nelson, Director II Community Connection for Child Care (661) 861-5311 (661) 861-5262 (Fax) chnelson@kern.org</p>			<p>hunterh@kerndhs.com</p> <p>Primary Bridge Contact Cheryl Nelson Director (661) 861-5311 chnelson@kern.org</p> <p>Voucher Ana Sanchez Program Manager AP (661) 861-5313 ansanchez@kern.org</p> <p>Navigator/TIC Trainer Perla Davis TIC Trainer/Navigator (661) 861-5344 pedavis@kern.org</p>
KINGS	<p>Kings County Human Services Agency 1400 West Lacey Boulevard, Building #8 Hanford, CA 93230</p> <p>Sergio Rubio, Program Specialist (559) 852-4858 (559) 582-7415 (Fax) Sergio.Rubio@co.kings.ca.us</p> <p>Definition of Stable: The customer is participating in a stable employment (subsidized or unsubsidized) or</p>	<p>Kings Community Action Organization Inc. 1130 N 11th Avenue Hanford, CA 93230 (APP)</p> <p>(559) 582-4386</p> <p>Ruth Rodriguez, Program Director Rrodriguez@kcao.org</p>	<p>Kings Community Action Organization Inc. 1130 N 11th Avenue Hanford, CA 93230</p> <p>(559) 582-4386</p> <p>Ruth Rodriguez, Program Director Rrodriguez@kcao.org</p>	<p>Kings Community Action Organization Inc. 1130 N 11th Avenue Hanford, CA 93230</p> <p>(559) 582-4386</p> <p>Ruth Rodriguez, Program Director Rrodriguez@kcao.org</p>	<p>Kings County Human Services Agency, Child Welfare Services 1400 W. Lacey Blvd., Bldg., 8 Hanford, CA 93230</p> <p>Primary County Contact Kendra Nolen-Davis CPS Supervisor (559) 852-4992 kendra.nolen@co.kings.ca.us</p> <p>Secondary County Contact Sergio Rubio Admin Support/ Prog Spec (559) 852-4858 Sergio.Rubio@co.kings.ca.us Fiscal Analyst Atonya Moore</p>

Child Care Coordinator's List (February 2023)

KINGS	<p>educational activity, after three months.</p> <p>Consortia Type: C-IV</p>				<p>(559) 852-2214 Atonya.Moore@co.kings.ca.us</p> <p>Jennifer Fernandes Fiscal Analyst (559) 852-2209 Jennifer.fernandes@co.kings.ca.us</p> <p>Primary Bridge Contact Ruth Rodriguez Program Director (559) 415-4220 rrodriguez@kcao.org</p> <p>Voucher/Data Patsy Douthat Child Care Assistance Program (559) 415-7225 pdouthat@kcao.org</p> <p>Navigator Lila Chavez Resource and Referral Program Specialist (559) 415-7562 lchavez@kcao.org</p> <p>TIC Trainer April Hatfield Resource and Referral Manager (559) 415-7561 ahatfield@kcao.org</p>
-------	--	--	--	--	---

Child Care Coordinator's List (February 2023)

LAKE	<p>Lake County Social Services 9055 Highway 53 Lower Lake, CA 95457</p> <p>Theresa Showen, Program Manager for Employment Services (707) 995-3749 (707) 995-9055 (Fax) tshowen@dss.co.lake.ca.us</p> <p>Definition of Stable: Six months or off cash aid.</p>	<p>North Coast Opportunities (NCO) Inc. – Rural Communities Child Care 14913 Lakeshore Drive, Suite C Clearlake, CA 95422 (APP)</p> <p>Teri Sedrick (707) 263-4688 Ext. 410 tsedrick@ncoinc.org</p>	<p>North Coast Opportunities (NCO) Inc. – Rural Communities Child Care 14913 Lakeshore Drive, Suite C Clearlake, CA 95422 (APP)</p> <p>Teri Sedrick (707) 263-4688 Ext. 410 tsedrick@ncoinc.org</p>	<p>North Coast Opportunities (NCO) Inc. – Rural Communities Child Care 850 Lakeport Blvd. Lake Port, CA 95453 (707) 263-4688 Ext. 413</p>	<p>Lake County Social Services Child Welfare Services 926 S Forbes Street Lakeport, CA 95453</p> <p>Primary County Contact Gracia Albin Supervising Staff Services Analyst (707) 262-4550 Gracia.albin@lakecountyca.gov</p> <p>Secondary County Contact Mary Pagan Program Manager (707) 262-4505 Mary.pagan@lakecountyca.gov</p>
LAKE	<p>Consortia Type: C-IV</p>		<p>NCO – Rural Communities Child Care 850 Lakeport Blvd. Lakeport, CA 95453 (707) 263-4688 Ext. 410</p>		<p>Fiscal Kari Holt Staff Services Manager (707) 995-4258 Kari.Holt@lakecountyca.gov</p> <p>Data Kim Costa Program Manager (707) 262-4546 Kim.Costa@lakecountyca.gov</p> <p>Resource and Referral (R&R) North Coast Opportunities, Inc. Rural Communities Child Care 413 North State Street Ukiah CA 95482 (Main Office)</p> <p>Clearlake Office</p>

Child Care Coordinator's List (February 2023)

LAKE					<p>14290 Olympic Drive Clearlake CA 95422 Lakeport Office 850 Lakeport Blvd. Lakeport CA 95453</p> <p>Director Teri Sedrick (707) 263-4688 x410 tsedrick@ncoinc.org</p> <p>Primary Bridge Contact Concepcion Bautista Child Care Subsidy Manager (707) 263-4688 x600 cbautista@ncoinc.org</p> <p>TIC Trainer Sulema Perez-Cruz Resource & Referral Specialist (707) 263-4688 x412 Sperez-torres@ncoinc.org</p>
LASSEN	<p>Lassen County Office of Ed. Child and Family Resources 472-013 Johnstonville Rd., North Susanville, CA 96130</p> <p>Melissa Rojas, Program Coordinator (530) 257-9781 (530) 257-2407 (Fax) mrojas@lassencfr.com</p>	<p>Lassen County Office of Ed. Child and Family Resources 472-013 Johnstonville Rd., North Susanville, CA 96130 (APP)</p> <p>Patty Thurman (530) 257-7214 PTthurman@lcoe.org</p>	<p>Lassen County Office of Ed. Child and Family Resources 472-013 Johnstonville Rd., North Susanville, CA 96130</p> <p>Patty Thurman (530) 257-7214 PTthurman@lcoe.org</p>	<p>Lassen County Office of Ed. Child and Family Resources 472-013 Johnstonville Rd., North Susanville, CA 96130</p> <p>(530) 257-9781 (530) 257-2407 (Fax) mrojas@lassencfr.com</p>	<p><i>Lassen County is not participating in the Bridge Program.</i></p>

Child Care Coordinator's List (February 2023)

	<p>Definition of Stable: Client remains in the same job and with the same child care provider for at least six months. Consortia Type: C-IV</p>	<p>Yvette M. Neely, Account Technician YNeely@lcoe.org 530-251-8730 (Direct Line) 530-251-9781 ext. 3204</p>			
LOS ANGELES	<p>Los Angeles County Dept. of Public Social Services CalWORKs and GAIN Program Division Child Care Program Section 12820 Crossroads Parkway South – West Annex City Of Industry, CA 91746-3411</p> <p>Nurhan Pirim (562) 908-6082 (562) 699-2791 (Fax) NurhanPirim@dpss.lacounty.gov</p> <p>Definition of Stable: • A participant who is CalWORKs approved • Employed for at least</p>	<p>Child Care Alliance of Los Angeles 815 Colorado Blvd. Suite C, 4th Floor Los Angeles, CA 90041</p> <p>Adela Arellano, Program Manager 323-274-1386 (direct) 323-274-1380 (main) adela.arellano@ccala.net</p> <p>Pathways 3325 Wilshire Blvd. Suite 1100 Los Angeles, CA 90010 (213) 427-2700</p>	<p>Child Care Alliance of Los Angeles 815 Colorado Blvd. Suite C, 4th Floor Los Angeles, CA 90041</p> <p>Adela Arellano, Program Manager 323-274-1386 (direct) 323-274-1380 (main) adela.arellano@ccala.net</p> <p>Pathways 3325 Wilshire Blvd. Suite 1100 Los Angeles, CA 90010 (213) 427-2700</p> <p>Pomona Unified</p>	<p>Pathways 3325 Wilshire Blvd. Suite 1100 Los Angeles, CA 90010 (213) 427-2700</p> <p>Pomona Unified School District 1460 E. Holt Ave., Suite 174 Pomona, CA 91767-5861 (909) 397-4740 Ext 25030</p> <p>Child Care Resource Center 20001 Prairie Street Chatsworth, CA 91311 (818) 717-1000</p>	<p>Los Angeles County Department of Children and Family Services 425 Shatto Pl, Los Angeles, CA 90020 <i>(multiple office locations)</i></p> <p>Primary County Contact Lisa-Marie Kaye DCFS Children Services Admin III (213) 351-3286 or (213) 332-1359 kayeli@dcfs.lacounty.gov</p> <p>Secondary County Contact Jennifer Hottenroth Division Chief (310) 972-3204 hottje@dcfs.lacounty.gov</p> <p>Margaret Wong DCFS Children Services Admin I (909) 802-1463 or (213) 247-7892 WongM2@dcfs.lacounty.gov</p>

Child Care Coordinator's List (February 2023)

<p>LOS ANGELES</p>	<p>six months and/or participating in a Welfare- to-Work activity that has been continuous for at least six months • Has an approved Stage One Child Care case</p> <p>Consortia Type: CalSAWS</p>	<p>(APP) Araceli Quintero, Director of Child Care Subsidy Programs Direct: (213) 427-2777 Main Office: (213) 427-2700 Fax: (213) 427-2701</p> <p>Pomona Unified School District 1460 E. Holt Ave., Suite 174 Pomona, CA 91767-5861 (909) 397-4740 Ext. 25265 (APP)</p> <p>Child Care Resource Center 20001 Prairie Street Chatsworth, CA 91311 (818) 717-1000 (APP)</p> <p>Connections for Children 5901 W. Century Blvd., Suite 400 Los Angeles, CA 90045</p>	<p>School District 1460 E. Holt Ave., Suite 174 Pomona, CA 91767-5861 (909) 397-4740 Ext. 25226</p> <p>Child Care Resource Center 20001 Prairie Street Chatsworth, CA 91311 (818) 717-1000</p> <p>Children's Home Society of California 4900 Airport Plaza, Suite 100 Long Beach, CA 90815 (562) 256-7400</p> <p>Connections for Children 5901 W. Century Blvd., Suite 400 Los Angeles, CA 90045 (310) 452-3325</p> <p>Crystal Stairs, Inc. 5110 W. Goldleaf Cir., Suite 150 Los Angeles, CA 90056-1282 (888) 543-7247</p> <p>Mexican American Opportunity Foundation 5657 E. Washington Blvd. Commerce, CA 90040 (323) 890-1555</p>	<p>Children's Home Society of California 4900 Airport Plaza, Suite 100 Long Beach, CA 90815 (562) 256-7400</p> <p>Connections for Children 5901 W. Century Blvd., Suite 400 Los Angeles, CA 90045 (310) 452-3325</p> <p>Crystal Stairs, Inc. 5110 W. Goldleaf Cir., Suite 150 Los Angeles, CA 90056-1282 (888) 543-7247</p> <p>Mexican American Opportunity Foundation 5657 E. Washington Blvd. Commerce, CA 90040 (323) 890-1555</p>	<p>Resource and Referral (R&R) Child Care Alliance of LA 815 Colorado Blvd., 4th floor Los Angeles, CA 90041</p> <p>Primary Bridge Contact Cristina Alvarado (323) 274-1390 Cristina.alvarado@ccala.net</p> <p>Secondary Bridge Contact/TIC Amie Caskey (323) 274-1383 Amie.caskey@ccala.net</p> <p>Drew Child Development TIC Training Coordinator Neva Wallach (323) 249-2950 nwallach@drewcdc.org</p>
--------------------	--	--	--	---	---

Child Care Coordinator's List (February 2023)

<p>LOS ANGELES</p>		<p>(310) 452-3325 (APP) Martha Gonzalez, Subsidized Programs Manager Phone: (310) 452-3325 ext. 206 Fax: (310) 452-3984 marthag@cfc-ca.org</p> <p>Crystal Stairs, Inc. 5110 W. Goldleaf Cir., Suite 150 Los Angeles, CA 90056-1282 (323) 421-1028 (APP)</p> <p>Ly Tanya Loughridge, CFO 323-421-1408 loughridge@crystalstairs.org</p> <p>Mauro A. Camara, Family Services Manager 323.421.2683 mcamara@crystalstairs.org</p> <p>Mexican American Opportunity Foundation 401 N. Garfield</p>	<p>CFO 323-421-1408 loughridge@crystalstairs.org</p> <p>Mexican American Opportunity Foundation 401 N. Garfield Avenue Montebello, CA 90640 (323) 890-9600 Ext. 3645</p> <p>Options for Learning 13100 Brooks Drive, Suite 100 Baldwin Park, CA 91706 (626) 856-5900</p> <p>Drew Child Development Corp. 3737 Martin Luther King Jr. Blvd. #201 Lynwood, CA 90262 (310) 609-3885</p> <p>International Institute of Los Angeles 3845 Selig Place Los Angeles, CA 90031-3143 (323) 224-3800</p> <p>City of Norwalk 11929 Alondra Blvd</p>	<p>Options for Learning 13100 Brooks Drive, Suite 100 Baldwin Park, CA 91706 (626) 856-5900</p>	
--------------------	--	--	---	---	--

Child Care Coordinator's List (February 2023)

<p>LOS ANGELES</p>		<p>Avenue Montebello, CA 90640 (323) 890-9600 Ext. 3614 (APP)</p> <p>Jazmin Sarkisyan, CalWORKs Stage 1 Program Director 323-278-3614 Fax: 323-890-9654 jsarkisyan@maof.com</p> <p>Options for Learning 13100 Brooks Drive, Suite 100 Baldwin Park, CA 91706 (626) 856-5900 (APP)</p> <p>Kelly O'Connell, Deputy Executive Director – Child Care Services Division KOConnell@optionsforlearning.org</p> <p>Norma Herrera ngherrera@optionsforlearning.org</p>	<p>Norwalk, CA 90650 (562) 462-1713</p>		
--------------------	--	--	---	--	--

Child Care Coordinator's List (February 2023)

LOS ANGELES		<p>Candy Meade, Subsidized Department Director cmeade@optionsforearning.org</p> <p>Drew Child Development Corp 3737 Martin Luther King Jr. Blvd. #525 Lynwood, CA 90262 (310) 609-3885 (APP)</p> <p>International Institute of Los Angeles 3845 Selig Place Los Angeles, CA 90031-3143 (323) 224-3800 (APP)</p> <p>Nancy Arellano, Assistant Division Director of Family Services City of Norwalk 11929 Alondra Blvd Norwalk, CA 90650 (562) 462-1713 (APP) NArellano@iilosangels.org</p>			
-------------	--	--	--	--	--

Child Care Coordinator's List (February 2023)

MADERA	<p>Madera County Department of Social Services 1620 Sunrise Avenue Madera, CA 93638 (559) 675-2410 (559) 662-8920 (Fax)</p> <p>Rose Martinez, Employment and Training Worker III rose.martinez@maderacounty.com</p> <p>Definition of Stable: Work or training schedule is stable; six months maximum aid</p> <p>Consortia Type: C-IV</p>	<p>Madera County Department of Social Services P.O. Box 569 Madera, CA 93639 (559) 662-8300 (CWD)</p> <p>Rose Martinez, Employment and Training Worker III rose.martinez@maderacounty.com</p>	<p>Community Action Partnership 1225 Gill Avenue Madera, CA 93637 Phone: (559) 661-0779 Fax: (559) 661-0764</p>	<p>Community Action Partnership 1225 Gill Avenue Madera, CA 93637 Phone: (559) 661-0779 Fax: (559) 661-0764</p>	<p>Madera County Social Services, Child Welfare Services 1610 Sunrise Ave Madera, CA 93638 <i>(multiple office locations)</i></p> <p>Primary County Contact Raeanne Jain Administrative Analyst II Raeanne.jain@maderacounty.com</p> <p>Secondary County Contact Genever Thomas Program Manager (559) 675-7841 genever.thomas@maderacounty.com</p> <p>Fiscal Jennifer Rivera Fiscal Manager rivera.jennifer@maderacounty.com</p> <p>Resource and Referral (R&R) Community Action Partnership of Madera County 1225 Gill Avenue</p>

Child Care Coordinator's List (February 2023)

MADERA					<p>Madera CA 93637</p> <p>Primary Bridge Contact Leticia Murillo (559) 675-5733 lmurillo@maderacap.org</p> <p>Secondary Bridge Contact Melissa Mendoza (559) 675-5741 mmendoza@maderacap.org</p> <p>Navigator/TIC Trainer Kareli Preciado (559) 675-5777 kpreciado@maderacap.org</p>
--------	--	--	--	--	---

Child Care Coordinator's List (February 2023)

<p>MARIN</p>	<p>Marin County Department of Health and Human Services 120 North Redwood 3rd Floor East San Rafael, CA. 94903</p> <p>Kristin Larson, Employment and Training Program Manager (415) 473-3346 klarson@marincounty.org</p> <p>Jannet Mercado, WTW/Child Care Analyst Jmercado@marincounty.org</p> <p>Definition of Stable: 3 months after CalWORKs discontinuance, then the family is transferred to Stage 2</p> <p>Consortia Type: C-IV</p>	<p>Marin Child Care Council 555 Northgate Drive, Suite 105 San Rafael, CA 94903</p> <p>Jody Windisch, Program Director (415) 491-5779 jody@mc3.org (APP)</p>	<p>Marin Child Care Council 555 Northgate Drive, Suite 105 San Rafael, CA 94903</p> <p>Jody Windisch, Program Director (415) 491-5779 jody@mc3.org (APP)</p>	<p>Marin Child Care Council 555 Northgate Drive, Suite 105 San Rafael, CA 94903</p> <p>Jody Windisch, Program Director (415) 491-5779 jody@mc3.org (APP)</p>	<p>Marin County Health and Human Services, Children and Family Services 3250 Kerner Blvd. San Rafael, CA 94901-4840</p> <p>Primary County Contact Bree Marchman CFS Division Director (415) 473-7136 bmarchman@marincounty.org</p> <p>Secondary County Contact Felice McClenon CFS Senior Analyst (415) 473-3708 fmcclenon@marincounty.org</p> <p>Primary Bridge Contact Silvia Valdez (415) 491-5781 Silvia@mc3.org</p> <p>TIC Trainer Jody Stamps (415) 491-5779 jody@mc3.org</p> <p>Michele Tyler michele@mc3.org (415) 491-5783</p>

Child Care Coordinator's List (February 2023)

<p>MARIPOSA</p>	<p>Mariposa County Dept. of Human Services P.O. Box 99 Mariposa, CA 95338</p> <p>Debbie Smith, Deputy Director (209) 966-3609 x230 (209) 966-5943 (Fax) dsmith@mariposacounty.org</p> <p>Definition of Stable: One parent in the household has continuous employment and the child(ren) remains in the same child care setting for at least three months.</p> <p>Consortia Type: C-IV</p>	<p>Infant/Child Enrichment Services 2067 Jones Street Mariposa, CA 95338 (209) 966-4474 (APP)</p> <p>Child Care Subsidy Program Infant/Child Enrichment Services, Inc.</p> <p>Cendie Shipp (209) 966-4474 cendies@icesagency.org</p>	<p>Infant/Child Enrichment Services 2067 Jones Street Mariposa, CA 95338 (209) 966-4474 (APP)</p> <p>Child Care Subsidy Program Infant/Child Enrichment Services, Inc.</p> <p>Cendie Shipp (209) 966-4474 cendies@icesagency.org</p>	<p>Infant/Child Enrichment Services 2067 Jones Street Mariposa, CA 95338 (209) 966-4474 (APP)</p> <p>Child Care Subsidy Program Infant/Child Enrichment Services, Inc.</p> <p>Cendie Shipp (209) 966-4474 cendies@icesagency.org</p>	<p><i>Mariposa County is not participating in the Bridge Program.</i></p>
-----------------	--	--	--	--	---

Child Care Coordinator's List (February 2023)

MENDOCINO	<p>Mendocino County Social Services CalWORKs Job Services 2550 N State Street, Suite 3 Ukiah, CA 95482</p> <p>Candy Prairie, Senior Program Specialist (707) 467-5566 PrarieC@mendocinocounty.org</p> <p>Definition of Stable: Any one of the following: • Discontinued from cash aid due to employment • 30 days F/T employment (32-40 hours per week) with consistent CC provider and routine child care arrangements • 60 days P/T employment (20-31 hours per week) with consistent CC provider and routine child care arrangements • Participant signed WTW plan and has regularly attended approved activities for 3 months with no interruption in CC arrangements</p> <p>Consortia Type:</p>	<p>Mendocino County Social Services CalWORKs Job Services 2550 N State St Suite 3 Ukiah, CA 95482 (707) 467-5500 (CWD)</p> <p>Candy Prairie, Senior Program Specialist (707) 467-5566 PrarieC@mendocinocounty.org</p> <p>Willits Integrated Services Center (WISC) 472 East Valley Street Willits, CA 95490 (CWD)</p> <p>Employment and Family Services Avila Center 764 South Franklin Street Ft Bragg, CA 95437 (707) 962-1000 (CWD)</p>	<p>North Coast Opportunities Inc. 413 N. State Street Ukiah, CA 95482</p> <p>Teri Sedrick, Program Director (707) 467-3200 Ext. 317 tsedrick@ncoinc.org (APP)</p> <p>Family Child Care Education Network Tracie Lyons, Child Care Subsidy Manager Rural Communities Child Care (707) 467-3229 tlyons@ncoinc.org (APP)</p>	<p>North Coast Opportunities Inc. 413 N. State Street Ukiah, CA 95482</p> <p>Teri Sedrick, Program Director (707) 467-3200 Ext. 317 tsedrick@ncoinc.org (APP)</p> <p>Family Child Care Education Network Tracie Lyons, Child Care Subsidy Manager Rural Communities Child Care (707) 467-3229 tlyons@ncoinc.org (APP)</p>	<p>Mendocino County Social Services, Family and Children Services 727 South State Street P.O. Box 839 Ukiah, CA 95482 <i>(In-House Administration of the Bridge Program)</i> <i>(multiple office locations)</i></p> <p>Primary County Contact Jena Conner Deputy Director (707) 463-7971 connerj@mendocinocounty.org</p> <p>Secondary County Contact Michaela Barlow Program Admin, Placement (707) 463-7755 barlowmi@mendocinocounty.org</p> <p>Fiscal Doug Gherkin (707) 463-7882 gherkind@mendocinocounty.org</p> <p>Director Teri Sedrick Navigator/TIC Trainer (707) 263-4688 x410 tsedrick@ncoinc.org</p> <p>Primary Bridge Contact</p>
MENDOCINO					

Child Care Coordinator's List (February 2023)

	CalSAWS				<p>Tracie Lyons Enrollment Bridge Lead (707) 467-3229 tlyons@ncoinc.org</p> <p>TIC Trainer Jaime Castaldo (707) 467-3211 castaldo@ncoinc.org</p>
MERCED	<p>Merced County Human Services Agency 1920 Customer Care Way Atwater, CA 95301</p> <p>Jeremiah Greggains (209) 385-3000 Ext. 5295 (209) 354-2505 (Fax) Jeremiah.Greggains@countyofmerced.com</p> <p>Definition of Stable: ACCESS may transition clients to Stage Two sooner than six months if they meet the following criteria:</p> <ul style="list-style-type: none"> • Discontinued from cash aid due to employment • Client has been employed full-time for 30 days and using the same child care provider 	<p>Merced County Office of Education – ACCESS 1460 W. 18th Street Merced, CA 95340</p> <p>Rosa Barragan (209) 381-6793 (209) 381-6793 Ext. 6161 rbarragan@mcoe.org (APP)</p>	<p>Merced County Office of Education- ACCESS 1460 W. 18th Street Merced, CA 95340</p> <p>Rosa Barragan (209) 381-6793 (209) 381-6793 Ext. 6161 rbarragan@mcoe.org</p> <p>PACE APP 114 Sansome Street, Suite 300 San Francisco, CA 94104 (800) 541-9922</p>	<p>Merced County Office of Education – ACCESS 1460 W. 18th Street Merced, CA 95340</p> <p>Rosa Barragan (209) 381-6793 (209) 381-6793 Ext. 6161 rbarragan@mcoe.org</p>	<p>Merced County Human Services Agency, Child Welfare Services 1920 Customer Care Way Atwater, CA 95301</p> <p>Primary County Contact Edith Tristan Program Administrator (209) 385-3000 x5390 Edith.tristan@countyofmerced.com</p> <p>Secondary County Contact CSB Analyst (209) 385-3000 csbanalyst@countyofmerced.com</p> <p>Fiscal Manager Arielle Ramirez (209) 385-3000 arielle.ramirez@countyofmerced.com</p> <p>Merced County Office of Education Early Education Department 1850 Wardrobe Avenue Merced CA 95341</p> <p>Primary Bridge Contact Rosa Barragan</p>
MERCED	<ul style="list-style-type: none"> • Client has completed job readiness and 				

Child Care Coordinator's List (February 2023)

	<p>assessment, signed the Welfare-to-Work plan; has been regularly attending his/her post Welfare-to-Work plan activity(ties) for three months; and there's been no interruption in their child care arrangements</p> <ul style="list-style-type: none"> • Self-initiated participant who has had constituent attendance and child care arrangements for three month <p>Consortia Type: C-IV</p>				<p>(209) 381-6793 x6161 rbarragan@mcoe.org Secondary County Monica Sevilla Program Manager (209) 381-6790 x6138 MSevilla@mcoe.org</p> <p>ContactVoucher/Navigator Zoua Moua (209) 381-6790 x6138 zmoua@mcoe.org</p>
MODOC	<p>Modoc County Department of Public Social Services 120 N. Main Street Alturas, CA 96101</p> <p>Karena Nield, Program Manager (530) 233-6501 ext. 1324 (530) 233-2136 (Fax) karenanield@co.modoc.ca.us</p>	<p>Modoc Child Care Resource & Referral 112 E. Second Street Alturas, CA 96101</p> <p>(530) 233-5437 (APP)</p> <p>Carol Madison, Executive Director Cmadison@teachinc.org</p>	<p>Modoc Child Care Resource & Referral 112 E. Second Street Alturas, CA 96101</p> <p>(530) 233-5437</p> <p>Carol Madison, Executive Director Cmadison@teachinc.org</p>	<p>Modoc Child Care Resource & Referral 112 E. Second Street Alturas, CA 96101</p> <p>(530) 233-5437</p> <p>Carol Madison, Executive Director Cmadison@teachinc.org</p>	<p><i>Modoc County is not participating in the Bridge Program.</i></p>
MODOC	<p>Definition of Stable: Two-three months of employment</p>				

Child Care Coordinator's List (February 2023)

	Consortia Type: C-IV				
MONO	<p>Mono County Social Services P.O. Box 2969 Mammoth Lakes, CA 93546</p> <p>Francie Avitia, Program Manager (760) 924-1770 (760) 924-5431 (Fax) favitia@mono.ca.gov</p> <p>Definition of Stable: An adult having left CalWORKs cash aid due to being over the income eligibility</p> <p>Consortia Type: C-IV</p>	<p>Mono County Social Services P.O. Box 2969 Mammoth Lakes, CA 93546</p> <p>Francie Avitia, Program Manager (760) 924-1770 (760) 924-5431 (Fax) favitia@mono.ca.gov y (CWD)</p>	<p>Community Connection for Children P.O. Box 8571 Mammoth Lakes, CA 93546</p> <p>Queenie Barnard, Director (760) 934-3343 (760) 934-2075 (Fax) qbarnard@imaca.net</p>	<p>Community Connection for Children P.O. Box 8571 Mammoth Lakes, CA 93546</p> <p>Queenie Barnard, Director (760) 934-3343 (760) 934-2075 (Fax) qbarnard@imaca.net</p>	<p>Mono County Social Services, Child Welfare Services 107384 Hwy 395 PO Box 579 Walker, CA <i>(multiple office locations)</i></p> <p>Primary County Contact Cathy Young Staff Services Analyst (760) 924-1780 cyoung@mono.ca.gov</p> <p>Secondary County Contact Kathryn Peterson Director (760) 924-1763 kpeterson@mono.ca.gov Fiscal Kyla Closson Staff Services Manager (530) 495-1263 kclosson@mono.ca.gov</p> <p><i>No R&R – Leaving Bridge 2023</i></p>

Child Care Coordinator's List (February 2023)

<p>MONTEREY</p>	<p>Monterey County Department of Social Services (MCDSS), CalWORKs Employment Services (CWES) 730 La Guardia Salinas, CA 93905</p> <p>Amber Minana, CalWORKs Employment Services Management Analyst II 831-796-3372 (Office) minanaam@co.monterey.ca.us</p> <p>Definition of Stable: A CalWORKs customer will be considered stable when both the following has occurred:</p> <ul style="list-style-type: none"> • The family has achieved satisfactory performance and attendance in their approved Welfare-to-Work activity for a minimum of six (6) months. • Child care is constituent for a minimum of six (6) months <p>Consortia Type: C-IV</p>	<p>MCDSS, CWES, Child Care Payment Unit 730 La Guardia Street Salinas, CA 93905 (831) 755-4452 (CWD)</p> <p>Amber Minana, Child Care Analyst minanaam@co.monterey.ca.us</p> <p>501-cwesdocs@co.monterey.ca.us</p>	<p>Mexican American Opportunity Foundation (MAOF) 11 Quail Run Circle, Suite 101 Salinas, CA 93907</p> <p>Brenda Heller 831-424-6939 bheller@maof.org</p>	<p>Mexican American Opportunity Foundation (MAOF) 11 Quail Run Circle, Suite 101 Salinas, CA 93907</p> <p>Brenda Heller (831) 424-5940 bheller@maof.org</p> <p>Maria Ortiz, Resource and Referral Program Manager 831-757-0775 mortiz@maof.org</p>	<p>Monterey County Social and Employment Services 1000 S Main St Ste 216 Salinas, CA 93901</p> <p>Primary County Contact Patricia Hernandez Child Welfare Management Analyst (831) 759-6768 hernandezpl@co.monterey.ca.us</p> <p>Secondary County Contact Chelsea Chacon Child Welfare Management Analyst (831) 755-8596 chaconc@co.monterey.ca.us</p> <p>Fiscal Carol Longoria, Accountant II (831) 755-4429 longoriaca@co.monterey.ca.us</p> <p>Montebello 401 N. Garfield Ave. Montebello CA 90640</p> <p>Primary Bridge Contact Eulalia Bocanegra Voucher/Navigator/TIC Trainer (831) 757-0775 ebocanegra@maof.org</p>
-----------------	---	--	---	---	---

Child Care Coordinator's List (February 2023)

<p>NAPA</p>	<p>Napa County Health and Human Services 2751 Napa Valley Corporate Drive Napa, CA 94558</p> <p>Shanna Gardner, Supervising Staff Services Analyst (707) 253-4101 (707) 253 -6095 (Fax) shanna.gardner@countyofnapa.org</p> <p>Definition of Stable: <ul style="list-style-type: none"> • The participant has been employed or has been participating in an employment program for at least 60 days, and • Child care attendance and provider retention is stable, and child care arrangements are fixed, routine, and long term • The family maintains a stable (permanent) housing situation, OR • The family is discontinued from CalWORKs </p> <p>Consortia Type: CalSAWS</p>	<p>Community Resources for Children 3299 Claremont Way, Suite 1 Napa, CA 94558 (APP)</p> <p>Emily Alexander, Family Support Program Manager (707) 253-0376 Ext. 109 (APP) ealexander@crnapa.org</p>	<p>Community Resources for Children 3299 Claremont Way, Suite 1 Napa, CA 94558</p> <p>Maria Contreras Llamas, Family Support Program Manager (707) 253-0376 Ext. 109 (APP) mllamas@crnapa.org</p>	<p>Community Resources for Children 3299 Claremont Way, Suite 1 Napa, CA 94558</p> <p>Maribel Miranda, Resource and Referral Counselor (707) 253-0376 Ext. 137 (APP) mmiranda@crnapa.org</p>	<p>Napa County Health and Human Services, Child Welfare Services 2751 Napa Valley Corporate Drive Napa, CA 94558</p> <p>Primary County Contact Shalon Keener (707) 253-6176 shalon.keener@countyofnapa.org</p> <p>Secondary County Contact Brenda Montanez CWS Staff Analyst (707) 253-4765 Brenda.Montanez@countyofnapa.org</p> <p>Fiscal Carol Haynes Deputy Chief Fiscal Officer (707) 253-4674 Carol.Haynes@countyofnapa.org</p> <p>Primary Bridge Contact Emily Alexander (707) 253-2085 ealexander@crnapa.org</p> <p>Voucher/Navigator/TIC Trainer Emily Alexander Family Support Program Manager (707) 253-2085 ealexander@crnapa.org</p> <p>Coach and TIC Trainer</p>
<p>NAPA</p>					

Child Care Coordinator's List (February 2023)

					<p>Stephany Reyes Coach and TIC Trainer (707) 346-6983 sreyes@crnapa.org</p> <p>Case Manager & Navigator Sonia Garcia Case Manager & Navigator (707) 253-0378 sgarcia@crnapa.org</p>
NEVADA	<p>Brighton Greens Resource Center 988 McCourtney Road Grass Valley, CA 95949</p> <p>Jane Leedy, Eligibility and Employment Supervisor (530) 265-1634 (530) 274-1049 (Fax) jane.leedy@co.nevada.ca.us</p> <p>Definition of Stable: A participant making satisfactory progress in his/her welfare to work plan. Indicators include:</p> <ul style="list-style-type: none"> • Acceptable attendance and participation in Welfare-to-Work activities • Acceptable evaluation(s) from instructor(s) 	<p>Sierra Nevada Children's Services 420 Sierra College Drive, Suite 100 Grass Valley, CA 95945 (530) 272-8866 x218 (APP)</p> <p>Craig Phillips, Executive Director T 530-272-8866 ext. 222 F 530-272-1354 craigp@sncs.org</p>	<p>Sierra Nevada Children's Services 420 Sierra College Drive, Suite 100 Grass Valley, CA 95945 (530) 272-8866 x218 (APP)</p> <p>Craig Phillips, Executive Director T 530-272-8866 ext. 222 F 530-272-1354 craigp@sncs.org</p>	<p>Sierra Nevada Children's Services 420 Sierra College Drive, Suite 100 Grass Valley, CA 95945 (530) 272-8866 x218 (APP)</p> <p>Craig Phillips, Executive Director T 530-272-8866 ext. 222 F 530-272-1354 craigp@sncs.org</p>	<p>Nevada County Health and Human Services Agency, Child Welfare Services 988 McCourtney Road Grass Valley, CA 95949</p> <p>Primary County Contact Nicholas Ready Program Manager (530) 265-1654 Nicholas.Ready@co.nevada.ca.us</p> <p>Secondary County Contact Faye Hignight, Administrative Analyst II (530) 265-1728 Faye.Hignight@co.nevada.ca.us</p> <p>Fiscal Laurel Foster, Administrative Services Officer (530) 470-2420 Laurel.Foster@co.nevada.ca.us</p> <p>Loyalton Office 701 Main Street, Suite 1</p>

Child Care Coordinator's List (February 2023)

	<ul style="list-style-type: none"> • Acceptable evaluation(s) from work site supervisor(s) • Acceptable academic performance • Passing grades • Reasonable and appropriate responses to Potential disruptions in attendance that might arise, including, but not limited to • Problems with child care • Personal or family illness • Class cancellations • Work site holidays • Transportation problems <p>Consortia Type: C-IV</p>				<p>Loyalton CA 96118</p> <p>Truckee Office 10075 Levon Avenue, Suite 201A, Truckee CA 96160</p> <p>Primary Bridge Contact Justine Riley (530) 272-8866 x207 justiner@sncs.org</p> <p>Navigator Lourdes Vose (530) 272-8866 x217 lourdesv@sncs.org</p> <p>TIC Trainer Lexie Gonzalez, Provider Specialist (530) 272-8833 x225 lexieg@sncs.org</p>
ORANGE	<p>County of Orange /Social Services Agency 500 N State College Blvd. Orange, CA 92868</p>	<p>Orange County Social Services Agency Welfare-to- Work Program 500 N. State College Blvd. (Bldg # 530) Orange, CA 92868</p>	<p>Orange County Department of Education (OCDE) 3001 Redhill Ave., Bldg. 4, Suite 113 Costa Mesa, CA 92626</p>	<p>Children's Home Society of California (CHS) 333 South Anita Drive, Suite 350 Orange, Ca 92868</p>	<p>Orange County Social Services, Adoption/Foster Care & Youth Services 744 N Eckhoff St. Orange, CA 92868</p>
ORANGE	<p>Misael V Hernandez, Administrative Manger I (714) 245-6148 (714) 245-6050 (Fax) Misael.Hernandez@ssa.</p>	<p>Executive Assistant (714) 245-6175 (CWD)</p>	<p>Debbie Troehler (714) 708-3860 dtroehler@ocde.us</p>	<p>Diane Jasso (714) 456-9800 DianeJ@chs-ca.org</p>	<p>Primary County Contact Randy Balduck Administrative Manager II (714) 566-2828</p>

Child Care Coordinator's List (February 2023)

	<p>ocgov.com</p> <p>Definition of Stable: A client's WTW activity is considered stable when they:</p> <ul style="list-style-type: none"> • Are working or in an approved non-employed WTW activity, except job search (JSR), and the job or the activity is expected to last at least 60 days or more, or • Are employed in a job that is not temporary and is expected to last 30 days or more <p>Consortia Type: CalWIN</p>	<p>Amber Nowak, Administrative Manger I (714) 245-6148 (714) 245-6050 (Fax) amber.nowak@ssa.ocgov.com</p>	<p>Children's Home Society of California (CHS) 333 South Anita Drive, Suite 350 Orange, Ca 92868 Diane Jasso (714) 456-9800 DianeJ@chs-ca.org</p>		<p>Randall.Balduck@ssa.ocgov.com</p> <p>Secondary County Contact Elizabeth Soto Staff Specialist (714) 328-7380 Elizabeth.Soto@ssa.ocgov.com Fiscal/Data Cynthia Grace Financial Services, Administrative Manager Cynthia.Grace@ssa.ocgov.com</p> <p>Primary Bridge Contact Voucher/Navigator/TIC Rachel Dailey Program Manager (714) 712-7873 racheld@chs-ca.org</p>
<p>PLACER</p>	<p>Placer County Human Services P.O. Box 20400 Auburn, Ca 95604-0400 11552 B Avenue Auburn, CA 95603</p> <p>Greg Geisler (916) 784-6134 (530) 889-7608 (Fax) ggeisler@placer.ca.gov</p> <p>Definition of Stable: A family discontinued from CalWORKs assistance</p>	<p>Placer County Office of Education Child Care Services 365 Nevada Street Auburn, CA 95603 (530) 745-1380 (APP)</p> <p>Pauline Dufour, Program Support Specialist 916-740-1645 pdufour@placercoe.org</p>	<p>Placer County Office of Education Child Care Services 365 Nevada Street Auburn, CA 95603 (530) 745-1380</p> <p>Pauline Dufour, Program Support Specialist 916-740-1645 pdufour@placercoe.org</p>	<p>Placer County Office of Education Child Care Services 365 Nevada Street Auburn, CA 95603 (530) 745-1380</p> <p>Darcy Roenspie, Program Manager 916-740-1641 droenspie@placercoe.org</p>	<p>Placer County Health and Human Services, Child Welfare Services 11552 B Ave. Auburn, CA 95603</p> <p>Primary County Contact Robin Bach Program Manager rbach@placer.ca.gov</p> <p>Secondary County Contact Jennifer Cook Assistant Director, Children's SOC (530) 889-6734 jcook@placer.ca.gov</p> <p>Fiscal</p>

Child Care Coordinator's List (February 2023)

<p>PLACER</p>	<p>Consortia Type: CalWIN</p>				<p>Meghan Shepard Supervising Accounting (530) 745-2315 MShepard@placer.ca.gov</p> <p>Resource and Referral (R&R) Placer County Office of Education 1229 Pleasant Grove Blvd. Roseville CA 95678</p> <p>Primary Bridge Contact Robyn Fratessa Coordinator and Navigator (530) 745-1368 rfratessa@placercoe.org</p> <p>Secondary Bridge Contact Darcy Roenspie Program Manager R&R (916) 740-1641 droenspie@placercoe.org</p>
---------------	-----------------------------------	--	--	--	--

Child Care Coordinator's List (February 2023)

<p>PLUMAS</p>	<p>Plumas County Dept. of Social Services 270 County Hospital Rd/Courthouse Annex Quincy, CA 95971</p> <p>Neal Caiazzo (530) 283-6276 (530) 283-1045 (Fax) nealcaiazzo@countyofplumas.com</p> <p>Definition of Stable: Off aid Consortia Type: C-IV</p>	<p>Plumas Rural Services Inc. 586 Jackson Street Quincy, CA 95971</p> <p>Deedra Desentz (530) 283-4454 ext. *819 ddesentz@plumasruralservices.org (APP)</p>	<p>Plumas Rural Services Inc. 586 Jackson Street Quincy, CA 95971</p> <p>Deedra Desentz (530) 283-4454 ext. *819 ddesentz@plumasruralservices.org</p>	<p>Plumas Rural Services Inc. 586 Jackson Street Quincy, CA 95971</p> <p>Deedra Desentz (530) 283-4454 ext. *819 ddesentz@plumasruralservices.org</p>	<p><i>Plumas County is not participating in the Bridge Program.</i></p>
<p>RIVERSIDE</p>	<p>Riverside County Department of Public Social Services 4060 County Circle Dr. Riverside, CA 92503</p> <p>Stephanie Carballosa, Child Care Program Specialist (951) 358-4993 SCarball@rivco.org</p> <p>Definition of Stable: When the family or client is no longer receiving CalWORKs</p> <p>Consortia Type: C-IV</p>	<p>Riverside County Department of Public Social Services 4060 County Circle Drive Riverside, CA 92503 (951) 358-3000 (CWD)</p> <p>Stephanie Carballosa, Child Care Program Specialist (951) 358-4993 SCarball@rivco.org</p>	<p>Riverside County Department of Public Social Services 4060 County Circle Drive Riverside, CA 92503 (951) 358-3000</p> <p>Stephanie Carballosa, Child Care Program Specialist (951) 358-4993 SCarball@rivco.org</p>	<p>Riverside County Department of Public Social Services 4060 County Circle Drive Riverside, CA 92503 (951) 358-3000</p> <p>Stephanie Carballosa, Child Care Program Specialist (951) 358-4993 SCarball@rivco.org</p>	<p>Riverside County Public Social Services, Children's Services 10281 Kidd St. Riverside, CA 92503</p> <p>Primary County Contact Nadia Brown Foster Care Regional Manager (951) 358-3574 NaBrown@rivco.org</p> <p>Secondary County Contact Harry Freedman Program Development Regional Manager (951) 358-6853 hfreedma@rivco.org</p> <p>Fiscal Gergis Kirnalous</p>

Child Care Coordinator's List (February 2023)

					<p>Fiscal Regional Manager (951) 358-4104 gekirnal@rivco.org</p> <p>Resource and Referral (R&R) Riverside County Office of Education Children's Services Unit Main Office 3909 12th Street PO Box 868 Riverside CA 92501</p> <p>Primary Bridge Contact Jill Johnson (951) 826-6626 jjohnson@rcoe.us</p>
SACRAMENTO	<p>Sacramento County Department of Human Assistance 1825 Bell Street, Suite 200 Sacramento, CA 95825</p> <p>Dilyara Kraminsky, Program Specialist Child Care, Cal-Learn, TCVAP (916) 875-4478 kraminskyd@saccounty.net</p> <p>Seidy Godinez, Policy Supervisor WTW, Child Care, Cal-Learn, TCVAP (916) 874-2133 godinezs@saccounty.net</p>	<p>Sacramento County Department of Human Assistance Child Care Processing Unit 7405 Greenhaven Drive, Sacramento, CA 95831 (916) 874-6000 DHA-Child-Care-Provider-Clients@saccounty.net</p> <p>Dilyara Kraminsky kraminskyd@saccounty.gov</p> <p>Seidy Godinez</p>	<p>Child Action, Inc. 10540 White Rock Road, Suite 180 Rancho Cordova, CA 95670-6012</p> <p>Christine Nguyen, Client Services Director (916) 369-0191 www.childaction.org Christine.Nguyen@childaction.org</p>	<p>Child Action, Inc. 10540 White Rock Road, Suite 180 Rancho Cordova, CA 95670-6012</p> <p>Christine Nguyen, Client Services Director (916) 369-0191 www.childaction.org Christine.Nguyen@childaction.org</p>	<p>Sacramento County Human Assistance, Department of Child, Family and Adult Services 3701 Branch Center Road Sacramento 95827 <i>(multiple office locations)</i></p> <p>Primary County Contact Gloria Bedford CPS Program Planner (916) 875-1344 bedfordg@saccounty.net</p> <p>Secondary County Contact Janine Anderson CPS Program Specialist (916) 875-0127 andersonj@saccounty.net</p> <p>Tiffany Glass</p>

Child Care Coordinator's List (February 2023)

<p>SACRAMENTO</p>	<p>Definition of Stable: The participant's Stage One case is active and will be ongoing with only an employment and/or school activity or payments have been issued on Stage One and meet stage Two requirements.</p> <p>Consortia Type: CalWIN</p>	<p>godinezs@saccounty.gov</p>		<p>(916) 876-7919 glasst@saccounty.net</p> <p>Primary Bridge Contact Anthony Garcia Director of Community Services (916) 369-3320 Anthony.Garcia@childaction.org</p> <p>Secondary Bridge Contact Edie Gutierrez Resource Manager (916) 328-7018 edie.gutierrez@childaction.org</p> <p>TIC Trainer Anitra VanSchoech (916) 369-3220 Anitra.vonschoech@childaction.org</p>
<p>SAN BENITO</p>	<p>San Benito County Health and Human Services Agency 1111 San Felipe Road, Suite 206 Hollister, CA 95023</p> <p>Serena Rojas, Staff Analyst srojas@cosb.us (831) 638-3382</p> <p>Lupe Rubalcava, Deputy Director lrubalcava@cosb.us (831) 634-4908</p>	<p>San Benito County Health and Human Services Agency 1111 San Felipe Road, Suite 206 Hollister, CA 95023</p> <p>Phone:(831) 636-4180 (CWD)</p> <p>Serena Rojas, Staff Analyst srojas@cosb.us (831) 638-3382</p> <p>Lupe Rubalcava, Deputy Director</p>	<p>Go Kids, Inc 1101 San Felipe Road, Suite D Hollister, CA 95023</p> <p>(831) 637-9205 ext 2227</p> <p>Alisa Quistian, Alternative Payment Supervisor alisaq@gokids.org</p>	<p>Go Kids, Inc 1101 San Felipe Road, Suite D Hollister, CA 95023</p> <p>(831) 637-9205</p> <p>Nancy Barocio, Resource and Referral Manager nancyb@gokids.org</p> <p>San Benito County Human Services, Children and Adult Services 1111 San Felipe Road Hollister, CA 95023</p> <p>Primary County Contact Joshua Mercier Deputy Director (831) 902-2563 JMercier@cosb.us</p> <p>Secondary County Contact Tracey Belton, Agency Director (831) 630-5146 tbelton@cosb.us</p> <p>Primary Bridge Contact</p>

Child Care Coordinator's List (February 2023)

SAN BENITO	<p>Definition of Stable: Each case is reviewed individually for stability</p> <p>Consortia Type: C-IV</p>	<p>lrubalcava@cosb.us (831) 634-4908</p>			<p>Kendra Bobsin (831) 637-9205 kendrab@gokids.org</p> <p>Voucher Katrina Uribe (408) 500-9827 katrinau@gokids.org</p> <p>Jessica Kranz (408) 840-9083 jessicak@gokids.org</p> <p>Navigator/TIC Trainer Maria Granados (831) 635-9205 Mariag@gokids.org</p> <p>Patty Briese (831) 637-9205 pattyb@gokids.org</p>
SAN BERNARDINO	<p>San Bernardino County Transitional Assistance Dept. 825 E. Hospitality Ln 2nd Floor San Bernardino, CA 92415</p> <p>Rhonda Staple, Program Manager (909) 383-9860 (909) 383-9714 (Fax) Rhonda.Staple@hss.sbcounty.gov</p> <p>Barbara Cole, Program</p>	<p>San Bernardino County Transitional Assistance Department 825 E. Hospitality Ln San Bernardino, CA 92415</p> <p>(909) 383-9860 (909) 383-9714 (Fax) (CWD)</p> <p>Rhonda Staple, Program Manager (909) 383-9860</p>	<p>Child Care Resource Center 1111 E Mill St, Suite 100 San Bernardino, CA 92408 (800) 722-1091 Website: www.ccrcca.org</p> <p>Niki VonHundley, CCIP Supervisor Nvonhundley@ccrcca.org</p> <p>Pomona Unified</p>	<p>Child Care Resource Center 1111 E Mill St, Suite 100 San Bernardino, CA 92408 (800) 722-1091 Website: www.ccrcca.org</p> <p>Niki VonHundley, CCIP Supervisor Nvonhundley@ccrcca.org</p> <p>Pomona Unified</p>	<p>San Bernardino County Human Services 1094 S. E St. San Bernardino, CA</p> <p>Primary County Contact Kristin Hinds CWS Manager (909) 891-3562 Kristin.Hinds@hss.sbcounty.gov</p> <p>Secondary County Contact Jeany Zepeda CWS Director (909) 891-3568 Jeany.zepeda@hss.sbcounty.gov</p>

Child Care Coordinator's List (February 2023)

<p>SAN BERNARDINO</p>	<p>Specialist I (909) 383-9661 (909) 383-9714 (Fax) Barbara.Cole@hss.sbcounty.gov</p> <p>Definition of Stable: Family is no longer receiving (Discontinued from CalWORKs) Consortia Type: C-IV</p>	<p>(909) 383-9714 (Fax) Rhonda.Staple@hss.sbcounty.gov</p> <p>Barbara Cole, Program Specialist I (909) 383-9661 (909) 383-9714 (Fax) Barbara.Cole@hss.sbcounty.gov</p>	<p>School District Child Development Program 1460 E Holt Ave, Suite 130 Pomona, CA 91767 (800) 822-5777</p>	<p>School District Child Development Program 1460 E Holt Ave, Suite 130 Pomona, CA 91767 (800) 822-5777</p>	<p>Resource and Referral (R&R) Primary Bridge Contact Beth Chiaro Director of Subsidy (818) 717-1062 bchiaro@ccrcca.org</p>
<p>SAN DIEGO</p>	<p>County of San Diego Health and Human Services Agency 1255 Imperial Ave., Suite 400 San Diego, CA 92101</p> <p>Patty Baker, Human Services Program Manager, Eligibility Operations (619) 338-2321 (619) 338-2972 (Fax) Patty.Baker@sdcounty.ca.gov</p>	<p>Equus/Arbor 1310 Union Plaza Ct, 2nd Floor Oceanside, CA 92065 E&T Contract #533498</p> <p>Priscilla Nunez, Project Director E&T Contract #533498 (619) 321-1811 (APP)</p> <p>Stacia Peters, Project Director (619) 321-1811 (APP)</p> <p>Public Consulting</p>	<p>YMCA of San Diego County CalWORKs Stage One (Equus/Arbor E&T Subcontractor) 3333 Camino Del Rio South, #400 San Diego, CA 92108-3839</p> <p>Kim McDougal, Executive Manager (619) 521-3055 Ext. 2517 kmcdougal@ymca.org</p> <p>Child Development Associates Inc. CalWORKs Stage</p>	<p>YMCA of San Diego County 3333 Camino Del Rio South, Suite # 400 San Diego, CA 92108-3839</p> <p>Karen Shelby, Resource & Referral Department Head (619) 521-3055 Ext. 2300 kshelby@ymca.org</p>	<p>San Diego County Health and Human Services 1255 Imperial Ave., Suite 400 San Diego, CA 92101</p> <p>Primary County Contact Veronica Sarabia CWS Policy Analyst (858) 616-5869 Veronica.Sarabia@sdcounty.ca.gov</p> <p>Secondary County Contact Diana Shreckengost Protective Services Program Manager (858) 616-5985 Diana.Shreckengost@sdcounty.ca.gov</p> <p>Primary Bridge Contact Cecilia Rubio</p>

Child Care Coordinator's List (February 2023)

SAN DIEGO	<p>Definition of Stable: When the participant's CalWORKs Welfare-to-Work activity plan has been in place for a minimum of 60 days, without significant attendance and/or compliance problems, and a child care plan is in place that is acceptable to both the parent and the Employment Case Manager (ECM)</p> <p>Consortia Type: CalWIN</p>	<p>Group 151 Van Houten Ave. El Cajon, CA 92020 Contract #533609</p> <p>AJ Antun, Project Director (615) 983-5331 aantun@pcgus.com</p> <p>Child Development Associates Rick Richardson, MA, MMAS, MS, President and Chief Executive Officer rrichardson@cdasd.org Office (619) 427-4411 ext. 1201</p>	<p>Two, Stage Three & APP 180 Otay Lakes Road, # 300 Bonita, CA 91902</p> <p>Jolie Buberl Director, Child Development Programs (619) 427-4411 jbuberl@cdasandiego.com</p>		<p>QA Department Head (619) 837-8003 cerubio@ymcasd.org</p> <p>Secondary Bridge Contact Jeanna Bruce Department Head Quality Support Services (619) 837-8098 jbruce@ymcasd.org</p>
SAN FRANCISCO	<p>San Francisco Office of Early Care and Education 1650 Mission Street, Suite 312 San Francisco, CA 94103</p> <p>Jason Holthe, Fiscal Strategies Senior Analyst</p>	<p>Children's Council of San Francisco 445 Church Street San Francisco, CA 94114- 1720</p> <p>Phillip C. Warner, Senior Director, Child Care Family Services (415) 276-2900 Ext.</p>	<p>Children's Council of San Francisco 445 Church Street San Francisco, CA 94114- 1720</p> <p>Phillip C. Warner, Senior Director, Child Care Family Services (415) 276-2900 Ext. 247 (APP)</p>	<p>Children's Council of San Francisco 445 Church Street San Francisco, CA 94114- 1720</p> <p>Phillip C. Warner, Senior Director, Child Care Family Services (415) 276-2900 Ext.</p>	<p>San Francisco County Human Services 1235 Mission St, San Francisco, CA 94103</p> <p>Primary County Contact Armando Zapote DEC Senior Fiscal Analyst (628) 652-3052 Armando.Zapote@sfgov.org</p> <p>Secondary County Contact</p>

Child Care Coordinator's List (February 2023)

<p>SAN FRANCISCO</p>	<p>(415) 355.3667 (415) 557-5615 (Fax) Jason.Holthe@sfgov.org</p> <p>Definition of Stable: When the adult is discontinued from cash aid.</p> <p>Consortia Type: CalWIN</p>	<p>247 (APP) pwarner@childrencouncil.org</p>	<p>pwarner@childrencouncil.org</p>	<p>247 (APP) pwarner@childrencouncil.org</p> <p>Wu Yee Children's Services Family and Provider Services 880 Clay Street, Lower Level San Francisco, CA 94108 (415) 677-0100</p>	<p>Ingrid Mezquita DEC – Executive Director (628) 652-3021 ingrid.mezquita@sfgov.org</p> <p>Primary Bridge Contact Erica Thorson Department Director (415) 343-3318 ethorson@childrencouncil.org</p>
<p>SAN JOAQUIN</p>	<p>San Joaquin County Human Services Agency P.O. Box 201056 Stockton, CA 95210-3006</p> <p>Karen Baglietto (209) 468-1152 kbaglietto@sjgov.org</p> <p>Definition of Stable: Working and/or in training more than six months, off aid, and/or close to their 24-month eligibility end date. Consortia Type: C-IV</p>	<p>Family Resource & Referral Center (FRRC) 509 W. Weber Avenue, Suite 101 Stockton, CA 95203 (APP)</p> <p>Tiffany Phovixay, Chief Operations Officer (209) 461-2911 tphovixay@frrcsj.org</p>	<p>Family Resource & Referral Center (FRRC) 509 W. Weber Avenue, Suite 101 Stockton, CA 95203 (APP)</p> <p>Tiffany Phovixay, Chief Operations Officer (209) 461-2911 tphovixay@frrcsj.org</p>	<p>Family Resource & Referral Center (FRRC) 509 W. Weber Avenue, Suite 101 Stockton, CA 95203 (APP)</p> <p>Tiffany Phovixay, Chief Operations Officer (209) 461-2911 tphovixay@frrcsj.org</p>	<p>San Joaquin County Human Services P.O. Box 201056 Stockton, CA 95210-3006</p> <p>Primary County Contact Akkia Pride-Polk CWS Deputy Director (209) 468-1826 Apride-polk@sjgov.org</p> <p>Secondary County Contact Diane Biscaia Social Worker Supervisor (209) 468-1228 dbiscaia@sjgov.org</p> <p>Primary Bridge Contact Tiffany Phovixay Chief Operating Officer (209) 461-2911 tphovixay@frrcsj.org</p>

Child Care Coordinator's List (February 2023)

					Secondary Bridge Contact Leticia Pizano Navigator & TIC Trainer (209) 461-2718 lpizano@frrcsj.org
SAN LUIS OBISPO	San Luis Obispo County Department of Social Services Welfare-To- Work/Employment Services 3433 South Higuera P.O. Box 8113 San Luis Obispo, CA 93403-8119 Jennifer Bierman, Program Manager (805) 781-1844 (805) 781-1846 (Fax) jbierman@co.slo.ca.us Definition of Stable: Stability is defined as a participant making satisfactory progress in his/her Welfare-to-Work (WTW) Plan and the child care arrangements have been in place for a minimum of 3 months Consortia Type: CalWIN	CAPSLO – Child Care Resource Connection 1030 Southwood Drive San Luis Obispo, CA 93401 (805) 541-2272 (APP) Shana Paulson, Children Services Manager Spaulson@capslo.org	CAPSLO – Child Care Resource Connection 1030 Southwood Drive San Luis Obispo, CA 93401 (805) 541-2272 (APP) Shana Paulson, Children Services Manager Spaulson@capslo.org	CAPSLO – Child Care Resource Connection 1030 Southwood Drive San Luis Obispo, CA 93401 (805) 541-2272 (APP) Shana Paulson, Children Services Manager Spaulson@capslo.org	San Luis Obispo County Social Services 3433 South Higuera San Luis Obispo, CA 93403-8119 Primary County Contact Ben King Division Manager (805) 781-1836 brking@co.slo.ca.us Secondary County Contact Jen Bierman Program Manager (805) 781-1844 jbierman@co.slo.ca.us Resource and Referral (R&R) Primary Bridge Contact Mika Buchanan Family Resource Manager (805) 782-4724 mbuchanan@capslo.org Secondary Bridge Contact Kellie Carey Child Care Services Specialist II (805) 541-2272 kcarey@capslo.org

Child Care Coordinator's List (February 2023)

SAN MATEO	San Mateo County Human Services Agency 400 Harbor Blvd., Bldg. B Belmont, CA 94002	San Mateo County Human Services Agency	Child Care Coordinating Council of San Mateo County (4Cs)	Child Care Coordinating Council of San Mateo County (4Cs)	San Mateo County Human Services 400 Harbor Blvd., Bldg. B Belmont, CA 94002
SAN MATEO	Jennifer Rogers, Human Services Manager II (650) 802-6454 (Office) (650) 594-4316 (Fax) jrogers@smcgov.org	400 Harbor Blvd, Building B Belmont, CA 94002 (650) 802-6454 (CWD)	330 Twin Dolphin Drive Suite 119 Redwood City, CA 944065 (650) 517-1400	330 Twin Dolphin Drive Suite 119 Redwood City, CA 94065	Primary County Contact Michele Tom Program Manager/Contracts (650) 877-5675 mxtom@smcgov.org
	Consortia Type: CalWIN	Jennifer Rogers, Human Services Manager II (650) 802-6454 (Office) (650) 594-4316 (Fax) jrogers@smcgov.org	Erica Ramos, Program Manager for Family Eligibility 650-517-1437 eramos@sanmateo4cs.org	Erica Ramos, Program Manager for Family Eligibility 650-517-1437 eramos@sanmateo4cs.org	Secondary County Contact Jenny Valencia CFS Management Analyst (650) 542-6652 jvalencia1@smcgov.org
					Primary Bridge Contact Erica Ramos Family Eligibility Manager (650) 517-1437 eramos@sanmateo4cs.org
					Secondary Bridge Contact Tanisha Hughes Director of Programs (650) 517-1400 thughes@sanmateo4cs.org

Child Care Coordinator's List (February 2023)

<p>SANTA BARBARA</p>	<p>Santa Barbara County Department of Social Services 1444 S. Broadway Santa Maria, CA 93454</p> <p>Esther Herrera, Department Business Specialist eherrer@countyofsb.org (805)614-1518</p>	<p>Santa Barbara County Department of Social Services 1444 S. Broadway Santa Maria, CA 93454 (CWD)</p> <p>Esther Herrera (805) 614-1518 eherrer@countyofsb.org</p>	<p>Santa Barbara County Department of Social Services 1444 S. Broadway Santa Maria, CA 93454 (805) 882-3693 (CWD)</p>	<p>Children's Resource & Referral of Santa Barbara County</p> <p>Jacqui Banta, Chief Operating Officer (COO) jbanta@crsbc.org</p> <p>Santa Maria Location: 124 W. Carmen Lane, Suite C Santa Maria, CA 93458 805-925-7071</p>	<p>Santa Barbara County Social Services 1444 S. Broadway Santa Maria, CA 93454</p> <p>Primary County Contact Noel Lossing Division Chief (805) 737-6019 nlossi@countyofsb.org</p>
<p>SANTA BARBARA</p>	<p>Mark Laurel, Department Business Specialist m Laurel@countyofsb.org (805) 614-1516</p> <p>Definition of Stable: A child care case meets the definition of stable if the participant has been consistently employed for at least four months and the employment is expected to continue. The CES continues to be responsible for the child care program until the Stage II agency accepts the IST and establishes a Stage II case for the participant.</p> <p>Consortia Type: CalWIN</p>	<p>Mark Laurel (805) 614-1516 m Laurel@countyofsb.org</p> <p>Mark Laurel, Department Business Specialist m Laurel@countyofsb.org (805) 614-1516</p> <p>Santa Barbara County Education Office P.O. Box 6307 4400 Cathedral Oaks Road Santa Barbara, CA 93111</p> <p>Monica Grimalda Mgrimaldo@sbceo.org (805) 964-4711 Ext.</p>	<p>Esther Herrera, Department Business Specialist eherrer@countyofsb.org (805)614-1518</p> <p>Mark Laurel, Department Business Specialist m Laurel@countyofsb.org (805) 614-1516</p> <p>Santa Barbara County Education Office P.O. Box 6307 4400 Cathedral Oaks Road Santa Barbara, CA 93111</p> <p>Monica Grimalda Mgrimaldo@sbceo.org (805) 964-4711 Ext.</p>	<p>Santa Barbara County Location: 4141 State St. # A3.1 Santa Barbara, CA 93110 805-963-6631</p>	<p>Secondary County Contact Norma Berumen Foster Care & Adoption (805) 346-7552 n.berumen@sbcsocialserv.org</p> <p>Resource and Referral (R&R) Children's Resource & Referral of Santa Barbara County 124 W. Carmen Lane, Suite C Santa Maria, CA 93458 805-925-7071</p> <p>Primary Bridge Contact Jacqui Banta Chief Operating Officer (805) 925-6701 jbanta@sbfcc.org</p> <p>Secondary Bridge Contact Raquel Valadez Family Services Manager (805) 925-7071 rvaladez@crsbc.org</p>

Child Care Coordinator's List (February 2023)

<p>SANTA BARBARA</p>			<p>4409</p> <p>Children's Resource & Referral Program of Santa Barbara County 4141 State St. # D 1.4 Santa Maria, CA 93110</p> <p>Raquel Valadez (805) 925-7071 RValadez@crrsbc.org</p>		
<p>SANTA CLARA</p>	<p>Santa Clara County Department of Social Services 333 W. Julian St., 5th Floor San Jose, CA 95110</p> <p>Natalie Allen, Program Manager II (408) 755-7723 Natalie.Allen@ssa.sccgov.org</p> <p>Definition of Stable: The participant is employed and off-aid.</p> <p>Consortia Type: CalWIN</p>	<p>Santa Clara County Department of Social Services 333 West Julian Street San Jose, CA 95110 (408) 755-7723 (408) 758-3575 (CWD)</p> <p>Natalie Allen, Program Manager II (408) 755-7723 Natalie.Allen@ssa.sccgov.org</p>	<p>GoKids Inc. 25 N. 14th St. Suite 700, San Jose, CA 95112</p> <p>Katrina Uribe, Family Service Director (408) 843-9730 katrinau@GOKIDS.ORG</p> <p>Child Development Inc. (DBA Choices for Children) 20 Great Oaks Blvd., Suite 200 San Jose, CA 95119-1399 (408) 280-2332</p> <p>Michelle Nguyen, Associate Director</p>	<p>Santa Clara County Office of Education 1290 Ridder Park Drive MC 261 San Jose, CA 95131-2304</p> <p>Michael Garcia, Director of Child Care Planning and Support (408) 453-6649 migarcia@sccoe.org</p>	<p>Santa Clara County Social Services 333 W. Julian St., 5th Floor San Jose, CA 95110 <i>(In-House Administration of the Bridge Program)</i></p> <p>Primary County Contact Jackie Howe Program Manager (408) 501-6819 Jackie.Howe@ssa.sccgov.org</p> <p>Secondary County Contact Kim Wahl (408) 271-7448 Kim.Wahl@ssa.sccgov.org</p> <p>Primary Bridge Contact Jackie Howe Program Manager (408) 501-6819 Jackie.Howe@ssa.sccgov.org</p> <p>Secondary Bridge Contact</p>

Child Care Coordinator's List (February 2023)

			(408) 280-2301 MNguyen@cfcsc.org		Kim Wahl (408) 271-7448 Kim.Wahl@ssa.sccgov.org
SANTA CRUZ	<p>Santa Cruz County Human Services 1020 Emeline Ave. Santa Cruz, CA 95061</p> <p>Katy Chevalier, Program Manager (831) 454-4612 (831) 454-4871 (Fax) Katy.Chevalier@santacruzcounty.us</p> <p>Definition of Stable: Client can stay in Stage One until three months post aid</p>	<p>Santa Cruz County Human Services Department P.O. Box 1320 Santa Cruz, CA 95061 (831) 454-4612 (CWD)</p> <p>Katy Chevalier, Program Manager (831) 454-4612 (831) 454-4871 (Fax) Katy.Chevalier@santacruzcounty.us</p>	<p>Santa Cruz County Parents Association/Voucher Project 9047 Soquel Drive, Suite D Aptos, CA 95003 831-688-2152 Staff@voucherproject.org</p> <p>Go Kids, Inc. 140 Westridge Drive, Suite 101 Watsonville, CA 95076 831-246-6711</p>	<p>Child Development Resource Center 400 Encinal St. Santa Cruz, CA 95060 (831) 466-5820</p> <p>Sita Moon, Coordinator of Child Development Resource Center smoon@santacruzco.org</p>	<p>Santa Cruz County Human Services 1020 Emeline Ave. Santa Cruz, CA 95061 <i>(In-House Administration of the Bridge Program)</i></p> <p>Primary County Contact Bridget Semlek Sr. Human Services Analyst (831) 454-4530 Bridget.Semlek@santacruzcounty.us</p> <p>Secondary County Contact Robin Lockett Director (831) 454-4062</p>

Child Care Coordinator's List (February 2023)

	Consortia Type: CalWIN				Robin.Luckett@santacruzcounty.us Primary Bridge Contact Sita Moon (831) 466-5826 smoon@santacruzcoe.org
SHASTA	Shasta County Health and Human Services Agency (HHSA) CalWORKs Employment Services 1400 California St. Redding, CA 96001	Shasta County Superintendent of Schools, Early Childhood Services 43 Hilltop Dr. Redding, CA 96003 (APP)	Shasta County Superintendent of Schools, Early Childhood Services 43 Hilltop Dr. Redding, CA 96003 (APP)	Shasta County Superintendent of Schools, Early Childhood Services 43 Hilltop Dr. Redding, CA 96003 (APP)	Shasta County Health and Human Services 1400 California St. Redding, CA 96001 Primary County Contact Dylan Chalfant Senior Staff Services Analyst (530) 225-5649 dchalfant@co.shasta.ca.us
SHASTA	Christopher Buhler, Program Manager (530) 245-7605 cbuhler@co.shasta.ca.us Patricia Schrader, Employment and Training Worker Supervisor (530) 225-5523	Lori Harrison, Child Care Manager (530) 225-2985 (530) 225-2999 Main lharrison@shastaco.e.org Renee Menefee (530) 225-0330	Lori Harrison, Child Care Manager (530) 225-2985 (530) 225-2999 Main lharrison@shastaco.e.org Renee Menefee (530) 225-0330	Lori Harrison, Child Care Manager (530) 225-2985 (530) 225-2999 Main lharrison@shastaco.e.org Renee Menefee (530) 225-0330	Secondary County Contact Pam Ottinger Program Manager (530) 229-8096 pottinger@co.shasta.ca.us Resource and Referral (R&R) Shasta County Office of Education 1644 Magnolia Avenue Redding, CA 96001

Child Care Coordinator's List (February 2023)

	<p>(530) 225-3790 (Fax) pschrader@co.shasta.ca.us</p> <p>Definition of Stable: Client is employed and has stable child care for three months</p> <p>Consortia Type: C-IV</p>	<p>(530) 225-2970 (Fax) (APP) rmenefee@shastacoe.org</p> <p>Shasta County Office of Education 43 Hilltop Drive Redding, CA 96002</p> <p>Kurt Swanson, Operations Director kswanson@shastacoe.org</p> <p>Evie Parker eparker@shastacoe.org</p>	<p>(530) 225-2970 (Fax) (APP) rmenefee@shastacoe.org</p> <p>Shasta County Office of Education 43 Hilltop Drive Redding, CA 96002</p> <p>Kurt Swanson, Operations Director kswanson@shastacoe.org</p> <p>Evie Parker eparker@shastacoe.org</p> <p>PACE APP 114 Sansome Street, Suite 300 San Francisco, CA 94104 (800) 541-9922</p>	<p>(530) 225-2970 (Fax) (APP) rmenefee@shastacoe.org</p> <p>Shasta County Office of Education 43 Hilltop Drive Redding, CA 96002</p> <p>Kurt Swanson, Operations Director kswanson@shastacoe.org</p> <p>Evie Parker eparker@shastacoe.org</p>	<p>Primary Bridge Contact Rea McFadden Director of Eligibility & Enrollment (530) 225-0184 rmcfadden@shastacoe.org</p> <p>Secondary Bridge Contact April Matthews Family & Community Support Supervisor (530) 605-2685 amatthews@shastacoe.org</p>
SIERRA	<p>Sierra County Dept. of Social Services P.O. Box 1019 Loyalton, CA 96118</p> <p>Lori McGee (530) 993-6725 (530) 993-6767 (Fax) lmcgee@sierracounty.ca.gov</p>	<p>Sierra County Department of Social Services P.O. Box 1019 202 Front Street Loyalton, CA 96118 (530) 993-6720 (CWD)</p> <p>Sierra Nevada Children's Services</p>	<p>Sierra Nevada Children's Services P.O. Box 1139 Loyalton, CA 96118 (530) 993-1288</p> <p>Jessica Norman, Family Support Specialist Jessican@sncs.org</p>	<p>Sierra Nevada Children's Services P.O. Box 1139 Loyalton, CA 96118 (530) 993-1288</p> <p>Jessica Norman, Family Support Specialist Jessican@sncs.org</p>	<p><i>Sierra County is not participating in the Bridge Program.</i></p>

Child Care Coordinator's List (February 2023)

	<p>Definition of Stable: Client is employed and has stable child care for three months</p> <p>Consortia Type: C-IV</p>	<p>420 Sierra College Drive, Suite 100 Grass Valley, CA 95945</p> <p>Craig Phillips, Executive Director T 530-272-8866 ext. 222 F 530-272-1354 craigp@sncs.org</p>			
SISKIYOU	<p>Siskiyou County Human Services 818 South Main St. Yreka, CA 96097</p> <p>Lilly Watters, Child Care Coordinator (530) 938-2748 Ext. 12 (530) 841-2791 (Fax) lwatters@siskiyouchildcare.org</p>	<p>Siskiyou Child Care Council P.O. Box 500 Weed, CA 96094 (530) 938-2748 info@siskiyouchildcare.org</p> <p>Denise Smith, Program Technician dsmith@siskiyouchildcare.org</p>	<p>Siskiyou Child Care Council P.O. Box 500 Weed, CA 96094 (530) 938-2748 info@siskiyouchildcare.org</p> <p>Chela Tapia, Program Eligibility Specialist ctapia@siskiyouchildcare.org</p>	<p>Siskiyou Child Care Council P.O. Box 500 Weed, CA 96094 (530) 938-2748 info@siskiyouchildcare.org</p> <p>Margaret Hoaglen, Resource and Referral Specialist mhoaglen@siskiyouchildcare.org</p>	<p>Siskiyou County Human Services 818 South Main St. Yreka, CA 96097</p> <p>Primary County Contact Trish Barbieri Director (530) 841-2750 tbarbieri@co.siskiyou.ca.us</p> <p>Secondary County Contact Corey Watson Program Manager (530) 841-4844 cwatson@co.siskiyou.ca.us</p> <p>Primary Bridge Contact Heather Solus Executive Director (530) 938-2748 hsolus@siskiyouchildcare.org</p>
SISKIYOU	<p>Definition of Stable: Two months in a Welfare-to-Work activity</p> <p>Consortia Type: C-IV</p>				

Child Care Coordinator's List (February 2023)

					<p>Secondary Bridge Contact Marcia Hill, Program Technician/Bridge Program Navigator (530) 841-4015 mhill@siskiyouchildcare.org</p>
SOLANO	<p>Solano County Health and Social Services Department 365 Tuolumne Street Vallejo, CA 94590</p> <p>Jennifer Stephenson Employment & Eligibility Services Manager 707-553-5914 jsstephenson@solanocounty.com</p>	<p>Solano Family & Children's Services (SFCS) 421 Executive Court North Fairfield, CA 94534 (APP) (707) 864-4607</p> <p>Diane Troche, Director of Programs DTroche@SOLANOFAMILY.ORG</p>	<p>Solano Family & Children's Services (SFCS) 421 Executive Court North Fairfield, CA 94534 (APP) (707) 864-4607</p> <p>Diane Troche, Director of Programs DTroche@SOLANOFAMILY.ORG</p>	<p>Solano Family & Children's Services (SFCS) 421 Executive Court North Fairfield, CA 94534 (APP) (707) 864-4620</p> <p>Cinda Rae Clemente, R&R Manager cclemente@SOLANOFAMILY.ORG</p>	<p>Solano County Health and Social Services 365 Tuolumne Street Vallejo, CA 94590</p> <p>Primary County Contact Kim McDowell Social Services Manager (707) 784- 8285 mcdowk@solanocounty.com</p> <p>Primary Bridge Contact Diana Troche Director of Programs (707) 864-4607 dtroche@solanofamily.org</p>
SOLANO	<p>Definition of Stable: A family will be determined stable when they have met one of the following criteria: a. Is no longer receiving cash aid b. Has maintained employment for six months</p> <p>Consortia Type: CalWIN</p>	<p>Kathy Lago, Executive Director Direct: (707) 864-4600 KLago@solanofamily.org</p>	<p>Kathy Lago, Executive Director Direct: (707) 864-4600 KLago@solanofamily.org</p> <p>PACE APP 114 Sansome Street, Suite 300 San Francisco, CA 94104 (800) 541-9922</p>	<p>Kathy Lago, Executive Director Direct: (707) 864-4600 KLago@solanofamily.org</p>	<p>Secondary Bridge Contact Kirsten Krause Family Services Manager (707) 864-4606 kkrause@solanofamily.org</p>

Child Care Coordinator's List (February 2023)

SONOMA	<p>Sonoma County Human Services Department - Employment and Training Division P.O. Box 1539 Santa Rosa, CA 95402</p> <p>Chris Sorg, Program Planning and Evaluation Analyst (707) 565-5535 (707) 565-5544 (Fax) csorg@schsd.org</p> <p>Definition of Stable: A client is considered stable under the following conditions:</p> <ul style="list-style-type: none"> • No longer income eligible for cash aid, or • Working at least 16 hours per week and the employment will continue, or • In a training program at least 16 hours per week and that program will last for at least four months <p>Consortia Type: CalWIN</p>	<p>Sonoma County Human Services Department P.O. Box 1539 Santa Rosa, CA 95402 (707) 565-5592 (CWD)</p> <p>Chris Sorg, Program Planning and Evaluation Analyst (707) 565-5535 (707) 565-5544 (Fax) csorg@schsd.org</p>	<p>4C's of Sonoma County 131-A Stony Cir #300 Santa Rosa, CA 95401 (707) 544-3077</p> <p>River to Coast Children Services P.O. Box 161 6300 Frist St, Guerneville, CA 95446 (707) 869-3613</p> <p>Soledad Figueroa, Executive Director sfigueroa@rccservices.org</p>	<p>4C's of Sonoma County 131-A Stony Cir #300 Santa Rosa, CA 95401 (707) 544-3077</p> <p>Lorie Siebler, R&R Assistant Director Lsiebler@sonoma4cs.org</p> <p>River to Coast Child Care Services P.O. Box 161 6300 Frist St, Guerneville, CA 95446 (707) 869-3613</p> <p>Soledad Figueroa, Executive Director sfigueroa@rccservices.org</p>	<p>Sonoma County Human Services P.O. Box 1539 Santa Rosa, CA 95402 (707) 565-5592 (CWD) <i>(In-House Administration of the Bridge Program)</i></p> <p>Primary County Contact Regina De Melo Program Development Manager (707) 565-4346 rdemelo@schsd.org</p> <p>Secondary County Contact Vickie Miller Administrative Aide (707) 565-4372 vmiller@schsd.org</p> <p>Resource and Referral (R&R) Primary Bridge Contact Lorie Siebler (707) 522-1413 x213 lsiebler@sonoma4cs.org</p>
--------	---	--	---	---	--

Child Care Coordinator's List (February 2023)

<p>STANISLAUS</p>	<p>Stanislaus County, StanWorks Community Services Agency P.O. Box 42 Modesto, CA 95353- 0042</p> <p>Rosalia Esguerra, Manager III WTW Coordinator (209) 558-2693 (209) 558-2558 (Fax) EsguerR@stancounty.com</p> <p>Definition of Stable: The customer has secured child care and is no longer a CalWORKs recipient for 3 months.</p> <p>Consortia Type: C-IV</p>	<p>Stanislaus County Community Services Agency P.O. Box 42 Modesto, CA 95353- 0042 (209) 558-2500 (CWD)</p> <p>Rosalia Esguerra, Manager III WTW Coordinator (209) 558-2693 (209) 558-2558 (Fax) EsguerR@stancounty.com</p>	<p>Stanislaus County Community Services Agency P.O. Box 42 Modesto, CA 95353- 0042 (209) 558-2500 (CWD/APP)</p> <p>Rosalia Esguerra, Manager III WTW Coordinator (209) 558-2693 (209) 558-2558 (Fax) EsguerR@stancounty.com</p>	<p>Stanislaus County Office of Education 1325 H St Modesto, CA 95354</p> <p>Lisa Henry, CFS Resource and Training Manager (209) 238-6300 Office (209) 238-6499 Fax lhenny@stancoe.org</p>	<p>Stanislaus County Community Services P.O. Box 42 Modesto, CA 95353-0042 <i>(In-House Administration of the Bridge Program)</i></p> <p>Primary County Contact Patricia Tout Manager IV (209) 558-2578 toutp@stancounty.com</p> <p>Secondary County Contact Sonia Ledezma Manager I (209) 558-2382 LedezmS@stancounty.com</p> <p>Resource and Referral (R&R) Primary Bridge Contact Lisa Henry CFS Resource and Training Manager lhenny@stancoe.org (209) 283-6300</p>
<p>SUTTER</p>	<p>Sutter County Department of Human Services and Employment Services P.O. Box 1592 Yuba City, CA 95992</p> <p>Luci Pauley-Garcia (530) 822-7133 Ext. 410</p>	<p>Sutter County Health and Human Services Department CalWORKs and Employment Services PO Box 1592 Yuba City, CA 95992</p> <p>Maria Ramirez,</p>	<p>Children's Home Society of California 1650 Sierra Ave. Suite 102 Yuba City, CA 95993</p> <p>Kristen Nixon (530) 763-6706 (530) 673-9215 FAX KristenN@CHS-ca.org</p> <p>Karen Washington</p>	<p>Children's Home Society of California 1650 Sierra Ave. Suite 102 Yuba City, CA 95993</p>	<p>Sutter County Human Services PO Box 1592 Yuba City, CA 95992</p> <p>Primary County Contact Paula Kearns Children Services Branch Director (530) 822-7200 pkearns@co.sutter.ca.us</p> <p>Secondary County Contact</p>

Child Care Coordinator's List (February 2023)

	<p>(530) 822-7213 (Fax) lpauley-garcia@co.sutter.ca.us</p> <p>Melinda Aure-Catbagan MCatbagan@co.sutter.ca.us</p> <p>Tracy Olvera Tolvera@co.sutter.ca.us</p> <p>Definition of Stable: When a recipient is no longer eligible to CalWORKs</p> <p>Consortia Type: C-IV</p>	<p>Social Worker/Child Care Supervisor (530) 822-7133 Ext 411 Mramirez@co.sutter.ca.us</p>	<p>(530) 673-7503 KarenW@CHS-ca.org</p>	<p>Resource & Referral Hotline: (530) 645-3620 Resource & Referral Program Email: ReferralsSutter@chs-ca.org</p> <p>Karen Washington (530) 673-7503 KarenW@CHS-ca.org</p>	<p>Kimberly Womack Child Welfare Services Program Manager (530) 822-7227 kwomack@co.sutter.ca.us</p> <p>Resource and Referral (R&R) Primary Bridge Contact Rachel Dailey Program Administrator (714) 712-7873 RachelD@chs-ca.org</p> <p>Secondary Bridge Contact Selena Rivera Program Manager (562) 256-7407 SelenaL@chs-ca.org</p>
TEHAMA	<p>Tehama County Department of Social Services P.O. Box 1515 Red Bluff, CA 96080</p> <p>Tara Loucks-Shepherd, Program Manager (530) 528-4158 (530) 527-5410 (Fax) tloucks@tcdss.org</p>	<p>Tehama County Department of Social Services P.O. Box 1515 Red Bluff, CA 96080 (530) 528-4021 (CWD)</p> <p>Tara Loucks-Shepherd, Program Manager (530) 528-4158 (530) 527-5410 (Fax) tloucks@tcdss.org</p>	<p>Child Care Referral & Education 409 Walnut Street Red Bluff, CA 96080 Phone: 530-529-3131 Fax: 530-529-6631</p> <p>Cassy Leggett, Supervisor cleggett@shastacoe.org</p>	<p>Child Care Referral & Education 409 Walnut Street Red Bluff, CA 96080 Phone: 530-529-3131 Fax: 530-529-6631</p> <p>Cassy Leggett, Supervisor cleggett@shastacoe.org</p>	<p>Tehama County Social Services P.O. Box 1515 Red Bluff, CA 96080</p> <p>Primary County Contact Steven Dickerson Program Manager (530) 528-4020 sdickerson@tcdss.org</p> <p>Secondary County Contact Nancy Keyes Supervisor (530) 528-4139 nkeyes@tcdss.org</p> <p>Resource and Referral (R&R) Shasta County Health and Human Services</p>
TEHAMA	<p>Definition of Stable: The following conditions must be met for a</p>				

Child Care Coordinator's List (February 2023)

	<p>minimum of three months:</p> <ul style="list-style-type: none"> • The activity has a regularly established schedule • The participant is attending the activity on a regular basis and is making satisfactory progress • The child care provider has agreed to provide care for the regularly established schedule and has provided all required documentation • The participant has transportation and housing to allow him or her to participate in the activity • Job search, unless attached to another activity, is not considered a “stable” activity <p>Consortia Type: C-IV</p>				<p>1400 California St. Redding, CA 96001</p> <p>Primary Bridge Contact Rea McFadden Director of Eligibility & Enrollment (530) 225-0184 rmcfadden@shastacoe.org</p> <p>Secondary Bridge Contact April Matthews Family & Community Support Supervisor (530) 605-2685 amatthews@shastacoe.org</p>
--	---	--	--	--	---

Child Care Coordinator's List (February 2023)

TRINITY	<p>Trinity County Health and Human Services Department 51 Industrial Park Way Weaverville, CA 96093-1470</p> <p>Robin Freeman, ETW Supervisor (530) 623-8243 (530) 623-1250 (Fax) rffreeman@trinitycounty.org</p> <p>Jesse Ferguson, Program Manager (530) 623-8239 (530) 623-8258 (Fax) jferguson@trinitycounty.org</p> <p>Definition of Stable: Client is no longer in need of CalWORKs aid or Stage One child care</p> <p>Consortia Type: C-IV</p>	<p>Human Response Network P.O. Box 2370 Weaverville, CA 96093-2370 (530) 623-2542 (APP)</p> <p>Sasha Pderosa, Eligibility Program Coordinator spderosa@hrtrinity.org</p>	<p>Human Response Network P.O. Box 2370 Weaverville, CA 96093-2370 (530) 623-2542</p> <p>Sasha Pderosa, Eligibility Program Coordinator spderosa@hrtrinity.org</p>	<p>Human Response Network P.O. Box 2370 Weaverville, CA 96093-2370 (530) 623-2542</p> <p>Mary Haugen, Children Services Director mhaugen@hrtrinity.org</p>	<p><i>Trinity County is not participating in the Bridge Program.</i></p>
TULARE	<p>Tulare County Health and Human Services 4031 W Noble Ave</p>	<p>Tulare County Health and Human Services</p>	<p>Tulare County Superintendent of Schools/Connections</p>	<p>Tulare County Superintendent of Schools/Connection</p>	<p>Tulare County Health and Human Services 4031 W Noble Ave Visalia, CA 93277</p>

Child Care Coordinator's List (February 2023)

<p>TULARE</p>	<p>Visalia, CA 93277</p> <p>Aleyda Montenegro amontene@tularecounty.ca.gov</p> <p>Lisa Diego, Stage One Program Specialist LDiego@tularecounty.ca.gov</p> <p>Sherri Glenn, Resource Specialist 4031 W. Noble Ave, Visalia, CA 93277 Phone: (559)623-0243 sglenn@tularecounty.ca.gov</p> <p>Catherine Ipema, Resource Specialist 4031 W. Noble Ave, Visalia, CA 93277 Phone: (559)623-0246 cipema@tularecounty.ca.gov</p> <p>Definition of Stable: A client is considered stable upon approval of child care</p> <p>Consortia Type: CalWIN</p>	<p>5957 South Mooney Blvd. Visalia, CA 93277 (559) 624-8075 (CWD)</p> <p>Sherri Glenn, Resource Specialist 4031 W. Noble Ave, Visalia, CA 93277 Phone: (559)623-0243 sglenn@tularecounty.ca.gov</p> <p>Lisa Diego, Stage One Program Specialist LDiego@tularecounty.ca.gov</p> <p>Catherine Ipema, Resource Specialist 4031 W. Noble Ave, Visalia, CA 93277</p>	<p>for Quality Care P.O. Box 5091 Visalia, CA 93278-5091 (559) 651-3026</p> <p>Melissa Bachtelle, Connections for Quality Care Manager 559-651-3026 ext. 3903 mbachtelle@cc.tcoe.org</p> <p>Norma Chavarin, AP Program Coordinator 559-651-3026 ext. 3923 Norma.Chavarin@cc.tcoe.org</p>	<p>s for Quality Care P.O. Box 5091 Visalia, CA 93278-5091 (559) 651-3026</p> <p>Elvira Barron, R&R Program Coordinator Ebarron@cc.tcoe.org</p>	<p>Primary County Contact Alissa Savoie Staff Service Analyst (559) 624-7487 ASavoie@tularecounty.ca.gov</p> <p>Secondary County Contact Samantha Ferrer Administrative Specialist (559) 624-8084 SLFerrer@tularecounty.ca.gov</p> <p>Resource and Referral (R&R) Tulare County Office of Education 7000 Doe Ave, Ste C Visalia CA 93291</p> <p>Primary Bridge Contact Jajaira Ortiz Foster Bridge Coordinator (559) 651-0185 Jajaira.ortiz@cc.tcoe.org</p> <p>Secondary Bridge Contact Brenda Larson School Psychologist (559) 651-0185 Brenda.larson@tcoe.org</p>
---------------	---	---	--	--	---

Child Care Coordinator's List (February 2023)

TUOLUMNE	<p>Tuolumne County Human Services Agency 20075 Cedar Rd. North Sonora, CA 95370</p> <p>Erin Gandolfo-Brune, Agency Manager (209) 533-5773 (209) 533-5714 (fax) egandolfo@co.tuolumne.ca.us</p> <p>Definition of Stable: <ul style="list-style-type: none"> • No longer income eligible for Cash Aid due to employment • Employed for 6 months working the minimum required hours to meet WPR • Constituent Child Care for 6 months </p> <p>Consortia Type: CalSAWS</p>	<p>Tuolumne County Health and Human Services Agency 20075 Cedar Road North Sonora, CA 95370 (209) 533-5711</p> <p>Erin Gandolfo- Brune, Agency Manager (209) 533-5773 (209) 533-5714 (fax) egandolfo@co.tuolumne.ca.us</p>	<p>Infant/Child Enrichment Services 20993 Niagara Falls Drive Sonora, CA 95370 (209) 533-0377</p> <p>Suzan Greenwood, CCIP Program Coordinator Suzang@icesagency.org</p>	<p>Infant/Child Enrichment Services 20993 Niagara Falls Drive Sonora, CA 95370 (209) 533-0377</p> <p>Suzan Greenwood, CCIP Program Coordinator Suzang@icesagency.org</p>	<p>Tuolumne County Social Services, Child Welfare Services 20075 Cedar Rd N. Sonora, CA 95370</p> <p>Primary County Contact Michie Anderson Agency Manager (209) 533-5785 Manderson@co.tuolumne.ca.us</p> <p>Secondary County Contact Reiko Craig Agency Manager (209) 533-7375 Rcraig@co.tuolumne.ca.us</p> <p>Arica Simpson Social Worker Assistant 209-533-5717 Arsimpson@co.tuolumne.ca.us</p> <p>Fiscal/Data Judy Stafford Senior Accountant (209) 533-7379 jstafford@co.tuolumne.ca.us</p> <p>Resource and Referral (R&R) Mariposa Office 5067 Jones Street Mariposa CA 95338 Primary Bridge Contact Tina Cones Project Specialist (and data) 209-425-0716 Tinac@iceagency.org</p>
TUOLUMNE					

Child Care Coordinator's List (February 2023)

					<p>Voucher Kaysee Trambley AP Program Manager 209-425-5060 kayseet@icesagency.org</p> <p>Fiscal Athena Low Director of Finance (209) 425-1336 fiscalservices@icesagency.org</p>
VENTURA	<p>County of Ventura Human Services Agency 855 Partridge Drive Ventura, CA 93003</p> <p>Delfina Becerra, Administrative Specialist II (805) 477-5357 (805) 477-5387 (Fax) Delfina.Becerra@ventura.org</p> <p>Definition of Stable: • Client is full-time employed, 32 or 35+ hours/week, for at least six (6) months.</p> <p>• Client is part-time employed, 12 or 15+ hours/ week, for at least six (6) months. • Satisfactorily participating in a county</p>	<p>Child Development Resources of Ventura County 221 Ventura Blvd. Oxnard, CA 93036-0277 (805) 485-7878 Ext. 558 (APP)</p> <p>Stuart Orlinsky, Programs Operations Analysis Officer Stuart.orldinsky@cdrv.org (805) 485-7878 ext 1301</p>	<p>Child Development Resources of Ventura County 221 Ventura Blvd. Oxnard, CA 93036-0277 (805) 485-7878 Ext. 558</p> <p>Stuart Orlinsky, Programs Operations Analysis Officer Stuart.orldinsky@cdrv.org (805) 485-7878 ext 1301</p>	<p>Child Development Resources of Ventura County 221 Ventura Blvd. Oxnard, CA 93036-0277</p> <p>Stuart Orlinsky, Programs Operations Analysis Officer Stuart.orldinsky@cdrv.org (805) 485-7878 ext 1301</p>	<p>Ventura County Human Services 800 S Victoria Ave. Los Angeles, CA 90005</p> <p>Primary County Contact Teresa Stanley Program Manager II (805) 654-3251 Teresa.Stanley@ventura.org</p> <p>Secondary County Contact Beau Godtel Administrative Specialist III (810) 275-3534 Beau.godtel@ventura.org</p> <p>Resource and Referral (R&R) Primary Bridge Contact Sylvia Lerma Child Care Services Supervisor – Bridge Program – CCPD</p>

Child Care Coordinator's List (February 2023)

	approved activity(ties) for 32 or 35+ hours/ week, for at least six (6) months Consortia Type: CalWIN				(805) 485-7878 Sylvia.lerma@cdrv.org Secondary Bridge Contact Felix Domingo Child Care Services Supervisor – CCPD (805) 485-7878 x1484 Felix.Domingo@cdrv.org
YOLO	Yolo County Health & Human Services Agency 25 N. Cottonwood Street Woodland, CA 95695 Elaine Lytle (530) 661-2754 (530) 661-2658 (Fax) elaine.lytle@yolocounty.org Definition of Stable: A family that has been employed for six consecutive months Consortia Type: CalWIN	Yolo County Children's Alliance 600 A. Street, Suite Y Davis, CA 95616 (APP) Tricia Styc (916) 375-6259 Tricia.styc@yolocounty.org Tanya Kiz (916) 375-6259 Tanya.kiz@yolocounty.org	Children's Home Society of California (CHS-CA) 1100 Main Street, Suite 120 Woodland, CA. 95695 (530) 723-5225 (530) 723-5223 (FAX) Sandra Herrera-Gonzalez, Program Administrator I Sandrag@chs-ca.org	Children's Home Society of California (CHS-CA) 1100 Main Street, Suite 120 Woodland, CA. 95695 (530) 723-5225 (530) 723-5223 (FAX) Sandra Herrera-Gonzalez, Program Administrator I Sandrag@chs-ca.org	Yolo County Health and Human Services Agency 25 N. Cottonwood Street Woodland, CA 95695 Primary County Contact Allison Dodd Administrative Services Analyst (530) 419-9654 Allison.Dodd@yolocounty.org Secondary County Contact Joni Lara-Jimenez Senior Administrative Services Analyst (530) 666-8290 Joni.Lara-Jimenez@yolocounty.org Resource and Referral (R&R) Primary Bridge Contact Rachel Dailey Program Director (714) 712-7873 RachelD@chs-ca.org Secondary Bridge Contact Selena Rivera Program Manager (562) 256-7407 SelenaL@chs-ca.org
YOLO					

Child Care Coordinator's List (February 2023)

YUBA	<p>Yuba County Department of Health and Human Services 5730 Packard Ave P.O. Box 2320 Marysville, CA 95901</p> <p>Courtney Pyse, Program Manager (530) 749-6235 (530) 749-6809 (Fax) cpyse@co.yuba.ca.us</p> <p>Definition of Stable: When a recipient is no longer eligible for cash aid; or when their Welfare- to-Work activity and child care have stabilized</p> <p>Consortia Type: C-IV</p>	<p>Children's Home Society of California 1650 Sierra Ave. Suite 102 Yuba City, CA 95993</p> <p>Diane Jasso, Director of Program Operations (530) 821-0874 Office (714) 712-7806 Other DianeJ@chs-ca.org (APP)</p>	<p>Children's Home Society of California 1650 Sierra Ave. Suite 102 Yuba City, CA 95993 Diane Jasso, Director of</p> <p>Program Operations (530) 821-0874 Office (714) 712-7806 Other DianeJ@chs-ca.org (APP)</p> <p>Sandra Herrera- Gonzalez, Program Administrator I Sandrag@chs-ca.org</p>	<p>Children's Home Society of California 1650 Sierra Ave. Suite 102 Yuba City, CA 95993</p> <p>Sandra Herrera- Gonzalez, Program Administrator I Sandrag@chs-ca.org</p> <p>Diane Jasso, Director of Program Operations (530) 821-0874 Office (714) 712-7806 Other DianeJ@chs-ca.org (APP)</p>	<p>Yuba County Health and Human Services 5730 Packard Ave P.O. Box 2320 Marysville, CA 95901</p> <p>Primary County Contact Tracy Enriquez Program Specialist (530) 749-6334 tenriquez@co.yuba.ca.us</p> <p>Secondary County Contact Norma Kupser Program Specialist (530) 749-6316 nkupser@co.yuba.ca.us</p> <p>Resource and Referral (R&R) Children's Home Society of California – Yuba 1650 Sierra Ave., STE 102 Yuba City CA 95993</p>
YUBA					<p>Primary Bridge Contact Rachel Dailey Program Director (714) 712-7873 RachelD@chs-ca.org</p> <p>Secondary Bridge Contact Selena Rivera Program Manager (562) 256-7407 SelenaL@chs-ca.org</p>

Child Care Coordinator's List (February 2023)

--	--	--	--	--	--

-END-