

DEPUTY DIRECTOR'S OFFICE

Executive Assistant

Dailee Nishio

SSM I Specialist

Colby Tunick

Child Development Consultant (RA)

Cecelia Fisher-Dahms

DEPUTY DIRECTOR

Maria Guadalupe Jaime-Mileh

PROGRAM INNOVATION, POLICY
RESEARCH BRANCH

CEA

Jeff Fowler⁴

Andrew Carroll

OT

DATA, RESEARCH & PLANNING OFFICE

Research Data Manager

Cliff Li

Ed Res & Eval Consultant

Brandon Muranaka

Channa Hewawickrama

SSM II (Specialist)

Vacant

RDS III

Vacant

SSM I

Thomas Ponik

AGPA

Jessica Caplinger

Yuliza Gomez Haro

SSA

Vacant

LEARNING INNOVATION & IMPROVEMENT OFFICE

Education Adm I

Nadirah Jones

OT

Taylor Shahbazian

Bil/Mig Education Consultant

Luis Rios Jr.

Education Program Consultant

Serene Yee

Vacant (Pollard)

Child Dev. Consultant

Vacant (DeMarais)

Vacant (Jones)

Kim Taniguchi

Heather McClellan

Vacant (B.-Newhouse)

EQUITY AND COMMUNITY PARTNERSHIP SECTION

SSM II

Edwin Vinson

INNOVATION/IGP UNIT

SSM I (SPECIALIST)

Esmeralda Santos³

Monica Williams³

Natalie Miller

Vacant

AGPA

Grant Taylor³

EQUITY IN CONTRACTS UNIT

SSM I

Lakisha Sipple

AGPA

Vacant (Mustafa)

Abigail Campbell

SSA

Vacant

CHILD CARE ADMINISTRATION BUREAU

SSM III

Jeff Fowler⁴

Jeffrey Urbik

OT

DIVISION ADMINISTRATIVE SUPPORT SECTION

SSM II

Samantha Harris

ADMIN SERVICES UNIT

SSM I

Clara Terry

AGPA

Charles Vail

Ziad Kawan

Momna Shahbaz (eff 3/2)

FUNDING APPLICATION UNIT

SSM I

Shane Diridoni

AGPA

Gina Wong

Divine Moody

Nicole Hvisc

SSA

Aurora Alvarez

APPEALS UNIT

SSM I

Rob Hom

AGPA

Mariza Gonzalez

Paty Munoz

Mayra Partida

Amanda Corchado

FISCAL & HR UNIT

SSM I

Pamela Race

AGPA

Cesar Morales

Diamond Thompson

SSA

Brittney Colon

FOOTNOTES:

1. OOC J. Azin - SSM

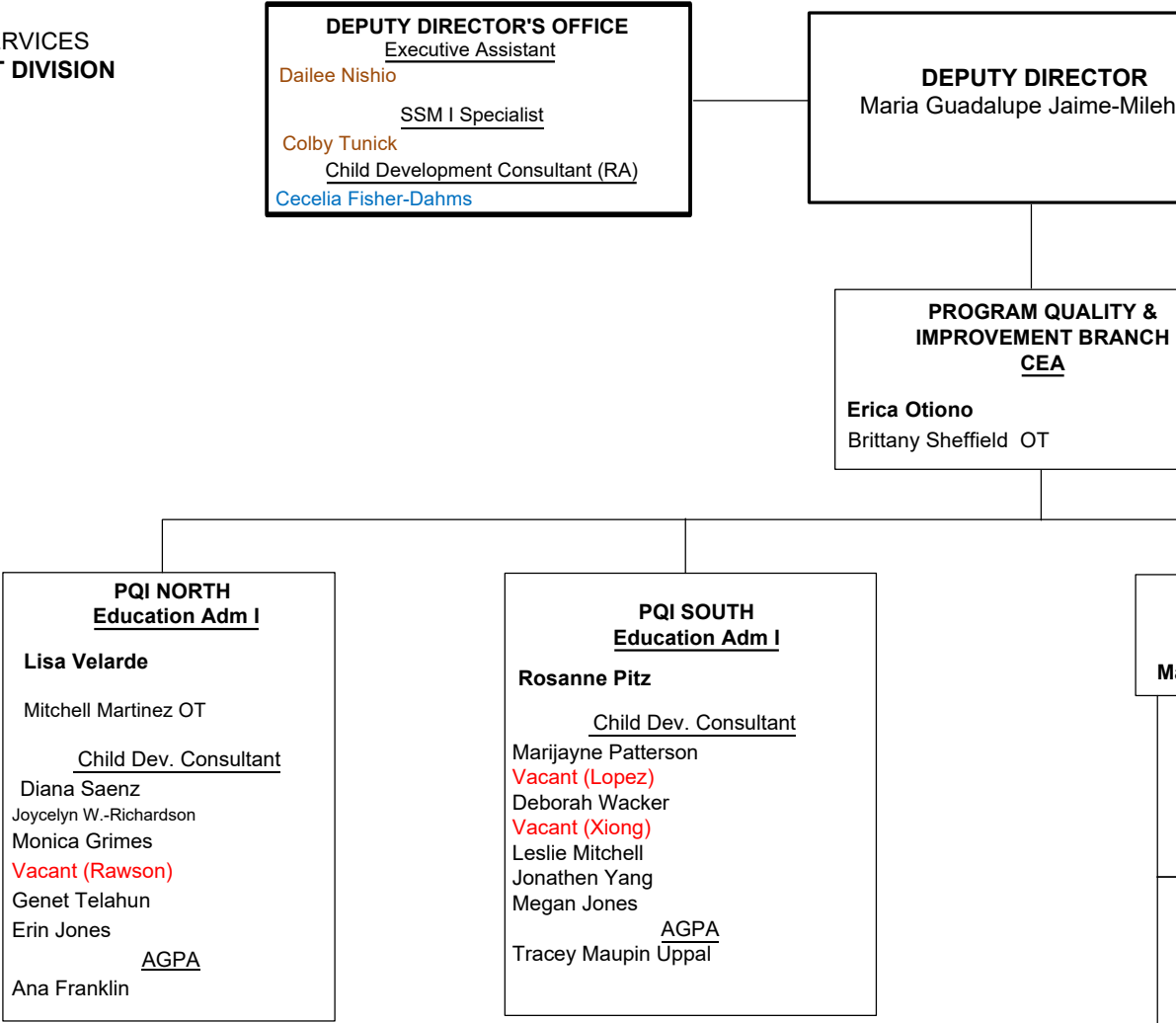
2. OOC E. Ramirez - S

3. RPA Forthcoming (F

4. OOC J. Fowler - CE

March 1-31
(page 2 of 2)

CURRENT



Child Care Policy and Development
County Assignments
November 2022

Analyst	County Assignments
Jane Andrews Jane.Andrews@dss.ca.gov	El Dorado Humboldt Lassen Napa Sacramento Sierra Yuba Kings Sonoma
Shanee Clark Shanee.Clark@dss.ca.gov	Amador Contra Costa Los Angeles Plumas Mendocino Mono San Joaquin Trinity
Linda Horne Linda.Horne@dss.ca.gov	Butte Colusa Madera Riverside San Bernardino San Francisco San Mateo Santa Clara
Alana Lee Alana.Lee@dss.ca.gov	Calaveras Fresno Imperial Inyo Merced Monterey Sutter Ventura

Molly McCall Molly.McCall@dss.ca.gov	-
Michelle Sonico Michelle.Sonico@dss.ca.gov	Del Norte Glenn Orange Shasta Santa Cruz San Luis Obispo Stanislaus Tuolumne
Vacant (please send questions to Amanda Gollon)	-
Kimberlee Beath Kimberlee.Beath@dss.ca.gov	All County questions related to the Emergency Child Care Bridge for Foster Children
Gabriella Carroll Gabriella.Carroll@dss.ca.gov)	Alpine Marin Mariposa Modoc Nevada San Benito San Diego Santa Barbara Solano
Jawid Azin Jawid.Azin@dss.ca.gov	Alameda Kern Lake Placer Siskiyou Tehama Tulare

	Yolo
--	------

Child Care Coordinator’s List

COUNTY	CHILD CARE COORDINATOR, COUNTY DEFINITION OF "STABLE", AND CONSORTIA TYPE	STAGE 1 ADMINISTRATION	STAGE 2 & 3 ADMINISTRATION
ALAMEDA	<p>Alameda County Social Services Agency, Workforce and Benefits Administration 24100 Amador St., 6th floor Hayward, CA 94544</p> <p>Phan Fong, Program Specialist (510) 259-3849 Phan.Fong@acgov.org</p> <p>Definition of Stable: When the previously aided adult is no longer receiving CalWORKs cash assistance for at least 6 months.</p> <p>Consortia Type: CalWIN</p>	<p>Community Child Care Council (4Cs) of Alameda County 22351 City Center Drive, Suite 200 Hayward, CA 94541 (510) 582-2182 (APP)</p> <p>Paulene McCarthy Child Care Payment Programs Director Phone: (510) 736-2727 paulenep@4c-alameda.org</p> <p>Sally Chou Payment Program Manager Phone: (510) 736-2736 sallyc@4c-alameda.org</p> <p>Hively 111 Myrtle Street Suite 102 Oakland, CA 94607 510-568-0306</p>	<p>Community Child Care Council (4Cs) of Alameda County 22351 City Center Drive, Suite 200 Hayward, CA 94541 (510) 582-2182</p> <p>Hively 6601 Owens Drive Suite 100 Pleasanton, CA 94588 (510) 568-3582</p> <p>Bananas 5232 Claremont Avenue Oakland, CA 94618 (510) 653-7853</p> <p>The Davis Street Community Center, Inc. 3081 Teagarden Street San Leandro, CA 94577 (510) 347-4620</p>
ALAMEDA		Hively	

Child Care Coordinator’s List

ALAMEDA		<p>111 Myrtle Street Suite 102 Oakland, CA 94607 (APP)</p> <p>James Chang, Chief Financial Officer (CFO) 925-364-0132 (cell) jchang@behively.org</p> <p>Helen Fulgado, Interim Finance Director 925-417-8733 helen.fulgado@behively.org</p> <p>Mona Attia-Shirk, Director of Alternative Payment Programs Phone: 925-417- 8733 Fax: 925-730-4942 mshirk@behively.org</p>	
---------	--	--	--

Child Care Coordinator’s List

ALPINE	Alpine County Health and Human Services 75 A Diamond Valley Road Markleeville, CA 96120	Catalyst Community Heather Della-Ripa 1029 Takela Dr #1 South Lake Tahoe, CA 96150 (APP)	Catalyst Community Heather Della-Ripa 1029 Takela Dr #1 South Lake Tahoe, CA 96150 (APP)
ALPINE	Gabriel Chavarin ICW III (530) 694-1335 (530) 694-2252 (Fax)	Tina Barna, Director (530) 541-5848	Tina Barna, Director (530) 541-5848

Child Care Coordinator’s List

	gchavarin@alpinecounty.ca.gov Erin Dobyys, Deputy Director edobyys@alpinecountyc.a.gov **Alpine County does not have a definition of stable Consortia Type: C-IV	Tbarna@catalystcomm.org	Tbarna@catalystcomm.org
AMADOR	Amador County Dept of Social Services 10877 Conductor Blvd Suite 200 Sutter Creek, CA 95685 Judy Brown, Employment and Training Supervisor (209) 223 6550 (209) 257 0242 (Fax) jbrown@amadorgov.org	The Resource Connection 8085 Highway 26, Suite G Mokelumne Hill, CA 95245 209-754-1075 (APP) Alicia Roman, Subsidy Coordinator ARoman@trcac.org	The Resource Connection 8085 Highway 26, Suite G Mokelumne Hill, CA 95245 209-754-1075 Alicia Roman, Subsidy Coordinator ARoman@trcac.org
AMADOR	Definition of Stable: The participation of at least six months in an assigned Welfare-to-		

Child Care Coordinator’s List

	<p>Work activity and or employment and making satisfactory progress and attendance; or off of cash aid.</p> <p>Consortia Type: C-IV</p>		
BUTTE	<p>Butte County CalWORKs Employment Services P.O. Box 1649 Oroville, CA 95965</p> <p>Ken MacKell (530) 879-3528 (530) 879-3468 (Fax) kmackell@buttecounty.net</p> <p>Cristi Roach, Program Manager (530) 552-6565 (530) 879-3468 (Fax) Croach@buttecounty.net</p>	<p>Valley Oak Children’s Services 3120 Cohasset Rd. #6 Chico, CA 95973 (APP)</p> <p>(530) 895-3572 (800) 345-8627 (530) 895-8524 (Fax)</p> <p>Mindy Brown, Child Care Payment Program Manager (530) 899-4912 mbrown@valleyoakchildren.org www.valleyoakchildren.org</p>	<p>Valley Oak Children’s Services 3120 Cohasset Rd. #6 Chico, CA 95973 (APP)</p> <p>(530) 895-3572 (800) 345-8627 (530) 895-8524 (Fax)</p> <p>Mindy Brown, Child Care Payment Program Manager (530) 899-4912 mbrown@valleyoakchildren.org</p>
BUTTE	<p>Definition of Stable: Meeting Welfare-to-Work program participation requirements in a work</p>		

Child Care Coordinator’s List

	<p>or training related activity and making satisfactory progress for three consecutive months.</p> <p>Consortia Type: C-IV</p>		
CALAVERAS	<p>Calaveras Works and Human Services Agency 509 E. St. Charles Street San Andreas, CA 95249</p> <p>Margo Ilonummi, Staff Services Analyst (209) 754-6545 (209) 754-9049 (Fax) Milonummi@co.calaveras.ca.us</p> <p>Definition of Stable: Three months with the same employer.</p> <p>Consortia Type: C-IV</p>	<p>The Resource Connection 8085 Highway 26, Suite G Mokelumne Hill, CA 95245 (209) 754-3048 (APP)</p> <p>Sheri Noble, Program Director snoble@trcac.org</p>	<p>The Resource Connection 8085 Highway 26, Suite G Mokelumne Hill, CA 95245 (209) 754-3048 (APP)</p> <p>Sheri Noble, Program Director snoble@trcac.org</p>

Child Care Coordinator’s List

COLUSA	<p>Colusa County Department of Health & Human Services 251 East Webster Street Colusa, CA 95932</p> <p>Leslie R. Culp, Eligibility & Employment Program Manager (530) 458-0867 (530) 458-0492 (Fax) Leslie.Culp@colusadhhs.org</p> <p>Definition of Stable: A client is making satisfactory progress in his/her Welfare-to-Work activities. Examples include stable employment or good attendance, academic performance and passing grades.</p> <p>Consortia Type:</p>	<p>Colusa County Office of Education 345 5th Street, Suite ABC Colusa, CA 95932 (APP)</p> <p>Alma Villasenor (530) 458-0300 (530) 458-0350 avillasenor@ccoe.net</p>	<p>Colusa County Office of Education 345 5th Street, Suite ABC Colusa, CA 95932</p> <p>Alma Villasenor (530) 458-0300 (530) 458-0350 avillasenor@ccoe.net</p>
COLUSA			

Child Care Coordinator’s List

	C-IV		
CONTRA COSTA	<p>Contra Costa County Employment and Human Services Department 40 Douglas Dr. Martinez, CA 94553</p> <p>Nanci Powers, Program Analyst Stage One Child Care (925) 608-4933 (925) 228-0294 (Fax) npowers@ehsd.cccounty.us</p> <p>Definition of Stable:</p>	<p>Contra Costa County Employment and Human Services Department Workforce Services Bureau 40 Douglas Drive Martinez, CA 94553- 4068</p> <p>Nanci Powers, Program Analyst Stage One Child Care (925) 608-4933 (925) 228-0294 (Fax)</p>	<p>Contra Costa County Employment and Human Services Department Community Services Bureau 1470 Civic Court, Suite 200 Concord, CA 94520</p> <p>Nelly Ige, Program Manager Stage Two/CAPP (925) 681-6334 (925) 768-7918 (Cell) nescobar@ehsd.cccounty.us</p>

Child Care Coordinator’s List

	<p>A family or adult that is disconnected from CalWORKs assistance.</p> <p>Consortia: CalWIN</p>	<p>npowers@ehsd.cccounty.us</p>	<p>CoCo Kids 1035 Detroit Avenue, Suite 200 Concord, CA 94518-2477 (925) 676-5442 Ext. 3212</p>
DEL NORTE	<p>Department of Health & Human Services Public Assistance/Employment and Training Branch 880 Northcrest Drive Crescent City, CA 95531</p> <p>Michael Coats, Program Manager (707) 464-3191 ext. 2600 (707) 465-1783 (Fax) mcoats@co.del-norte.ca.us Definition of Stable: The client has been working with the same employer for six months.</p>	<p>Del Norte Child Care Council P.O. Box 1350 Crescent City, CA 95531 (707) 464-8311 Ext. 224 (APP)</p> <p>Tracy McCracken Tracy@dnccc.com</p>	<p>Del Norte Child Care Council P.O. Box 1350 Crescent City, CA 95531 (707) 464-8311 Ext. 224</p> <p>Tracy McCracken Tracy@dnccc.com</p>
DEL NORTE	<p>Consortia Type: C-IV</p>		

Child Care Coordinator’s List

EL DORADO	<p>El Dorado County Health and Human Services Agency 3057 Briw Road Placerville, CA 95667</p> <p>Susan Quinn, Employment and Training Supervisor (530) 642-4862 (530) 626-9060 (Fax) Susan.Quinn@edcgov.us</p> <p>Sherry Whalen, Back-up Support (530) 642-7369 sherry.whelen@edgov.us</p> <p>Definition of Stable: 30 days of employment.</p> <p>Consortia Type: C-IV</p>	<p>El Dorado County Department of Social Service 3057 Briw Road Placerville, CA 95667 (530) 642-4862 (CWD)</p> <p>Susan Quinn, Employment and Training Supervisor (530) 642-4862 (530) 626-9060 (Fax) Susan.Quinn@edcgov.us</p>	<p>Catalyst Community 3161 Cameron Park Drive, Suite 101 Cameron Park, CA 95682 (530) 676-0707</p> <p>1029 Takela Drive, Suite 1 South Lake Tahoe, CA 96150 (530) 541-5848</p> <p>Heather Della Ripa, Child Care Subsidy Manager hdellarippa@catalystcomm.org</p>
EL DORADO			

Child Care Coordinator’s List

FRESNO	<p>Fresno County Department of Social Services 3500 Never Forget Lane, Clovis, CA 93612</p> <p>Kim Desmond, Program Manager (559) 600-3251 desmok@fresnocountyca.gov</p> <p>Kirsten Rocha, Program Supervisor (559) 600-3296 krocha@fresnocountyca.gov</p>	<p>Fresno County Department of Social Services 3500 Never Forget Lane, Clovis, CA 93612 (559) 600-2300 (CWD)</p> <p>Kim Desmond, Program Manager (559) 600-3251 desmok@fresnocountyca.gov</p>	<p>Supportive Services, Inc. 5090 N. West Avenue Fresno, CA 93711 (559) 230-2030 (559) 230-2051 (Fax)</p> <p>Children’s Services Network 1911 N. Helm Avenue Fresno, CA 93727- 1614 (559) 456-1100 (Reception) (559) 456-8195 (FIND Care) (559) 475-7266 (Fax)</p>
FRESNO	<p>Christine Mendez, Social Services Program Supervisor (559) 600-3701 (559) 600-3705 (Fax) cmendez@fresnocountyca.gov</p> <p>Definition of Stable: When clients are no</p>	<p>Kirsten Rocha, Program Supervisor (559) 600-3296 krocha@fresnocountyca.gov</p>	<p>Silvia Casillas, AP Specialist silviac@cvcsn.org</p>

Child Care Coordinator’s List

FRESNO	longer eligible for Stage One services Consortia Type: CalWIN		
GLENN	Glenn County Health and Human Services Agency 420 E Laurel Street Willows, CA 95988	Glenn County Health & Human Services Agency 420 E Laurel Willows, CA 95988	Glenn County Health & Human Services Agency 420 E Laurel Willows, CA 95988

Child Care Coordinator’s List

GLENN	<p>Janelle Kelly, Child Care Liaison (530)934-1538 (530)934-6521 jkelly@countyofglenn.net</p> <p>Definition of Stable: When the client becomes employed full-time and retains employment for at least 30 days.</p> <p>Consortia Type: C-IV</p>	<p>(530) 934-6514 (CWD)</p> <p>Glenn County Office of Education Arné Stanfield astanfield@glenncoe.org</p> <p>Joie Owen, Family Services Division Manager (530) 865 1267 ext. 2203 jowen@glenncoe.org</p>	<p>(530) 934-6514</p> <p>Glenn County Office of Education Arné Stanfield astanfield@glenncoe.org</p> <p>Joie Owen, Family Services Division Manager (530) 865 1267 Ext. 2203 jowen@glenncoe.org</p>
HUMBOLDT	Department of Health and Human Services – Social Services Branch –	Changing Tides Family Services 2259 Myrtle Avenue	Changing Tides Family Services 2259 Myrtle Avenue

Child Care Coordinator’s List

HUMBOLDT	<p>Welfare to Work Employment Training Division 929 Koster Street Eureka, CA 95501 Ari Chandler, Staff Services Analyst and CalWORKs Child Care Coordinator achandler@co.humboldt.ca.us</p> <p>Ryan Bishop, Program Manager (707) 269-4136 (707) 268-2798 (Fax) rbishop@co.humboldt.ca.us</p> <p>Definition of Stable: The point in time when a recipient’s long-term activity is progressing smoothly and reliable child care services are in place.</p> <ul style="list-style-type: none">• Stability can refer to the parent utilizing the same provider over a significant period of time.• Stability can also refer to a client who is not experiencing significant barriers to participation	<p>Eureka CA 95501 (APP)</p> <p>Kerry Venegas, Executive Director 707-444-8293 KVenegas@changingtidesfs.org</p> <p>Jeanine Cañedo- Moncrief, Deputy Director of Early Learning and Care JCanedo-Moncrief@changingtidesfs.org</p> <p>Kellie Farrell, Child Care Services Director KFarrell@changingtidesfs.org</p>	<p>Eureka CA 95501 Kerry Venegas, Executive Director 707-444-8293 KVenegas@changingtidesfs.org</p> <p>Jeanine Cañedo- Moncrief, Deputy Director of Early Learning and Care JCanedo-Moncrief@changingtidesfs.org</p> <p>Kellie Farrell, Child Care Services Director KFarrell@changingtidesfs.org</p>
----------	---	---	--

Child Care Coordinator’s List

	Consortia Type: C-IV		
IMPERIAL	Imperial County Department of Social Services 2995 South 4th St, Suite 103 El Centro, CA 92243 Araceli Lopez, Program Manager (760) 336-4099 (760) 337-5783 (Fax) aracelilopez@co.imperial.ca.us	Imperial County Department of Social Services 2995 South 4th Street, Suite 105 El Centro, CA 92243 (CWD) Araceli Lopez, Program Manager (760) 336-4099 (760) 337-5783 (Fax) aracelilopez@co.imperial.ca.us	Imperial County Child Development Services 1398 Sperber Road El Centro, CA 92243 (760) 312-6431 Emma Sanchez, Assistant Director of Budgets and Accounting esanchez@icoe.org
IMPERIAL	Definition of Stable: To have an active welfare to work agreement and/or employment and having the same child care provider for at least three consecutive months. Consortia Type: C-IV		

Child Care Coordinator’s List

INYO	<p>Inyo County Health and Human Services 920 North Main Street Bishop, CA 93514</p> <p>Morningstar Willis-Wagoner, Human Services Supervisor (760) 872-1394 (760) 872-4950 (Fax) mwagoner@inyocounty.us</p> <p>Definition of Stable: The client is employed, off of cash assistance and has had stable work hours for at least 30 days.</p> <p>Consortia Type:</p>	<p>Inyo County Superintendent of Schools Child Care Connection 164 Grandview Drive Bishop, CA 93514 (APP)</p> <p>(760) 873-5123 Ext. 332</p> <p>Kat Duncan, Administrator kduncan@inyocoe.org</p>	<p>Inyo County Superintendent of Schools Child Care Connection 164 Grandview Drive Bishop, CA 93514 (APP)</p> <p>(760) 873-5123 Ext. 332</p> <p>Kat Duncan, Administrator kduncan@inyocoe.org</p>

Child Care Coordinator’s List

	C-IV		
KERN	<p>Kern County Dept. of Human Services P.O. Box 511 Bakersfield, CA 93302</p> <p>Shannon Oastler, Human Services Assistant Program Manager (661) 873-2822 (661) 873-2896 (Fax) oastler@kerndhs.com</p>	<p>Kern County Superintendent of Schools Community Connection for Child Care 2000 K Street #110 Bakersfield, CA 93301 (APP) (661) 861-5200</p> <p>Ana Sanchez, Program Manager 661-861-5313 ansanchez@kern.org</p> <p>Early Childhood Council of Kern</p>	<p>Kern County Superintendent of Schools Community Connection for Child Care 2000 K Street #110 Bakersfield, CA 93301 (661) 861-5200</p> <p>Ana Sanchez, Program Manager 661-861-5313 ansanchez@kern.org</p>
KERN	<p>Definition of Stable Families are considered stable when the parent(s) and/or guardian(s) of the assistance unit have been identified as:</p>		

Child Care Coordinator’s List

	<ul style="list-style-type: none">• No longer receiving cash aid; or• Employed for at least nine months full-time (30 hours or more per week); or• Employed for at least nine months part-time (less than 30 hours per week) with a combination of another approved CalWORKs activity totaling 30 hours or more per week <p>Consortia Type: C-IV</p>	<p>Kern County Dental Health Network Kern Early Stars 2000 K Street, Suite 110 Bakersfield, CA 93301</p> <p>Cheryl Nelson, Director II Community Connection for Child Care (661) 861-5311 (661) 861-5262 (Fax) chnelson@kern.org</p>	
KINGS	<p>Kings County Human Services Agency 1400 West Lacey Boulevard, Building #8 Hanford, CA 93230</p> <p>Sergio Rubio, Program Specialist (559) 852-4858 (559) 582-7415 (Fax) Sergio.Rubio@co.kings.ca.us</p> <p>Definition of Stable: The customer is participating in a stable employment (subsidized or unsubsidized) or</p>	<p>Kings Community Action Organization Inc. 1130 N 11th Avenue Hanford, CA 93230 (APP)</p> <p>(559) 582-4386</p> <p>Ruth Rodriguez, Program Director Rrodriguez@kcao.org</p>	<p>Kings Community Action Organization Inc. 1130 N 11th Avenue Hanford, CA 93230</p> <p>(559) 582-4386</p> <p>Ruth Rodriguez, Program Director Rrodriguez@kcao.org</p>

Child Care Coordinator’s List

KINGS	educational activity, after three months. Consortia Type: C-IV		
-------	--	--	--

Child Care Coordinator’s List

LAKE	<p>Lake County Social Services 9055 Highway 53 Lower Lake, CA 95457</p> <p>Theresa Showen, Program Manager for Employment Services (707) 995-3749 (707) 995-9055 (Fax) tshowen@dss.co.lake.ca.us</p> <p>Definition of Stable: Six months or off cash aid.</p>	<p>North Coast Opportunities (NCO) Inc. – Rural Communities Child Care 14913 Lakeshore Drive, Suite C Clearlake, CA 95422 (APP)</p> <p>Teri Sedrick (707) 263-4688 Ext. 410 tsedrick@ncoinc.org</p>	<p>North Coast Opportunities (NCO) Inc. – Rural Communities Child Care 14913 Lakeshore Drive, Suite C Clearlake, CA 95422 (APP)</p> <p>Teri Sedrick (707) 263-4688 Ext. 410 tsedrick@ncoinc.org</p>
LAKE	<p>Consortia Type: C-IV</p>		<p>NCO – Rural Communities Child Care 850 Lakeport Blvd. Lakeport, CA 95453 (707) 263-4688 Ext. 410</p>

Child Care Coordinator’s List

LAKE			
LASSEN	<p>Lassen County Office of Ed. Child and Family Resources 472-013 Johnstonville Rd., North Susanville, CA 96130</p> <p>Melissa Rojas, Program Coordinator (530) 257-9781 (530) 257-2407 (Fax) mrojas@lassencfr.com</p>	<p>Lassen County Office of Ed. Child and Family Resources 472-013 Johnstonville Rd., North Susanville, CA 96130 (APP)</p> <p>Patty Thurman (530) 257-7214 PThurman@lcoe.org</p>	<p>Lassen County Office of Ed. Child and Family Resources 472-013 Johnstonville Rd., North Susanville, CA 96130</p> <p>Patty Thurman (530) 257-7214 PThurman@lcoe.org</p>

Child Care Coordinator’s List

	Definition of Stable: Client remains in the same job and with the same child care provider for at least six months. Consortia Type: C-IV	Yvette M. Neely, Account Technician YNeely@lcoe.org 530-251-8730 (Direct Line) 530-251-9781 ext. 3204	
LOS ANGELES	<p>Los Angeles County Dept. of Public Social Services CalWORKs and GAIN Program Division Child Care Program Section 12820 Crossroads Parkway South – West Annex City Of Industry, CA 91746-3411</p> <p>Nurhan Pirim (562) 908-6082 (562) 699-2791 (Fax) NurhanPirim@dpss.lacounty.gov Definition of Stable: • A participant who is CalWORKs approved • Employed for at least</p>	<p>Child Care Alliance of Los Angeles 815 Colorado Blvd. Suite C, 4th Floor Los Angeles, CA 90041</p> <p>Adela Arellano, Program Manager 323-274-1386 (direct) 323-274-1380 (main) adela.arellano@ccala.net</p> <p>Pathways 3325 Wilshire Blvd. Suite 1100 Los Angeles, CA 90010 (213) 427-2700</p>	<p>Child Care Alliance of Los Angeles 815 Colorado Blvd. Suite C, 4th Floor Los Angeles, CA 90041</p> <p>Adela Arellano, Program Manager 323-274-1386 (direct) 323-274-1380 (main) adela.arellano@ccala.net</p> <p>Pathways 3325 Wilshire Blvd. Suite 1100 Los Angeles, CA 90010 (213) 427-2700</p> <p>Pomona Unified</p>

Child Care Coordinator’s List

LOS ANGELES	six months and/or participating in a Welfare- to-Work activity that has been continuous for at least six months • Has an approved Stage One Child Care case	(APP) Araceli Quintero, Director of Child Care Subsidy Programs Direct: (213) 427-2777 Main Office: (213) 427-2700 Fax: (213) 427-2701	School District 1460 E. Holt Ave., Suite 174 Pomona, CA 91767-5861 (909) 397-4740 Ext. 25226
	Consortia Type: CalSAWS	Pomona Unified School District 1460 E. Holt Ave., Suite 174 Pomona, CA 91767-5861 (909) 397-4740 Ext. 25265 (APP)	Child Care Resource Center 20001 Prairie Street Chatsworth, CA 91311 (818) 717-1000
		Child Care Resource Center 20001 Prairie Street Chatsworth, CA 91311 (818) 717-1000 (APP)	Children's Home Society of California 4900 Airport Plaza, Suite 100 Long Beach, CA 90815 (562) 256-7400
		Connections for Children 5901 W. Century Blvd., Suite 400 Los Angeles, CA 90045	Connections for Children 5901 W. Century Blvd., Suite 400 Los Angeles, CA 90045 (310) 452-3325
			Crystal Stairs, Inc. 5110 W. Goldleaf Cir., Suite 150 Los Angeles, CA 90056-1282 (323) 421-1028 Ly Tanya Loughridge,

Child Care Coordinator’s List

LOS ANGELES		(310) 452-3325 (APP) Martha Gonzalez, Subsidized Programs Manager Phone: (310) 452- 3325 ext. 206 Fax: (310) 452-3984 marthag@cfc-ca.org	CFO 323-421-1408 lloughridge@crystalstairs.org
		Crystal Stairs, Inc. 5110 W. Goldleaf Cir., Suite 150 Los Angeles, CA 90056-1282 (323) 421-1028 (APP)	Mexican American Opportunity Foundation 401 N. Garfield Avenue Montebello, CA 90640 (323) 890-9600 Ext. 3645
		Ly Tanya Loughridge, CFO 323-421-1408 lloughridge@crystalstairs.org	Options for Learning 13100 Brooks Drive, Suite 100 Baldwin Park, CA 91706 (626) 856-5900
		Mauro A. Camara, Family Services Manager 323.421.2683 mcamara@crystalstairs.org	Drew Child Development Corp. 3737 Martin Luther King Jr. Blvd. #201 Lynwood, CA 90262 (310) 609-3885
		Mexican American Opportunity Foundation 401 N. Garfield	International Institute of Los Angeles 3845 Selig Place Los Angeles, CA 90031- 3143 (323) 224-3800
			City of Norwalk 11929 Alondra Blvd

Child Care Coordinator’s List

LOS ANGELES		<p>Avenue Montebello, CA 90640 (323) 890-9600 Ext. 3614 (APP)</p> <p>Jazmin Sarkisyan, CalWORKs Stage 1 Program Director 323-278-3614 Fax: 323-890-9654 jsarkisyan@maof.com</p> <p>Options for Learning 13100 Brooks Drive, Suite 100 Baldwin Park, CA 91706 (626) 856-5900 (APP)</p> <p>Kelly O’Connell, Deputy Executive Director – Child Care Services Division KOConnell@optionsforlearning.org</p> <p>Norma Herrera nherrera@optionsforlearning.org</p>	Norwalk, CA 90650 (562) 462-1713
----------------	--	--	-------------------------------------

Child Care Coordinator’s List

LOS ANGELES		<p>Candy Meade, Subsidized Department Director cmeade@optionsforearning.org</p> <p>Drew Child Development Corp 3737 Martin Luther King Jr. Blvd. #525 Lynwood, CA 90262 (310) 609-3885 (APP)</p> <p>International Institute of Los Angeles 3845 Selig Place Los Angeles, CA 90031-3143 (323) 224-3800 (APP)</p> <p>Nancy Arellano, Assistant Division Director of Family Services City of Norwalk 11929 Alondra Blvd Norwalk, CA 90650 (562) 462-1713 (APP) NArellano@iilosangels.org</p>	
-------------	--	--	--

Child Care Coordinator’s List

MADERA	<p>Madera County Department of Social Services 1620 Sunrise Avenue Madera, CA 93638 (559) 675-2410 (559) 662-8920 (Fax)</p> <p>Rose Martinez, Employment and Training Worker III rose.martinez@maderacounty.com Definition of Stable: Work or training schedule is stable; six months maximum aid</p> <p>Consortia Type: C-IV</p>	<p>Madera County Department of Social Services P.O. Box 569 Madera, CA 93639 (559) 662-8300 (CWD)</p> <p>Rose Martinez, Employment and Training Worker III rose.martinez@maderacounty.com</p>	<p>Community Action Partnership 1225 Gill Avenue Madera, CA 93637 Phone: (559) 661- 0779 Fax: (559) 661-0764</p>

Child Care Coordinator's List

MADERA			
--------	--	--	--

Child Care Coordinator’s List

MARIN	<p>Marin County Department of Health and Human Services 120 North Redwood 3rd Floor East San Rafael, CA. 94903</p> <p>Kristin Larson, Employment and Training Program Manager (415) 473-3346 klarson@marincounty.org</p> <p>Jannet Mercado, WTW/Child Care Analyst Jmercado@marincounty.org</p> <p>Definition of Stable: 3 months after CalWORKs discontinuance, then the family is transferred to Stage 2</p> <p>Consortia Type: C-IV</p>	<p>Marin Child Care Council 555 Northgate Drive, Suite 105 San Rafael, CA 94903</p> <p>Jody Windisch, Program Director (415) 491-5779 jody@mc3.org (APP)</p>	<p>Marin Child Care Council 555 Northgate Drive, Suite 105 San Rafael, CA 94903</p> <p>Jody Windisch, Program Director (415) 491-5779 jody@mc3.org (APP)</p>

Child Care Coordinator’s List

MARIPOSA	<p>Mariposa County Dept. of Human Services P.O. Box 99 Mariposa, CA 95338</p> <p>Debbie Smith, Deputy Director (209) 966-3609 x230 (209) 966-5943 (Fax) dsmith@mariposacounty.org</p> <p>Definition of Stable: One parent in the household has continuous employment and the child(ren) remains in the same child care setting for at least three months.</p> <p>Consortia Type: C-IV</p>	<p>Infant/Child Enrichment Services 2067 Jones Street Mariposa, CA 95338 (209) 966-4474 (APP)</p> <p>Child Care Subsidy Program Infant/Child Enrichment Services, Inc.</p> <p>Cendie Shipp (209) 966-4474 cendies@icesagency.org</p>	<p>Infant/Child Enrichment Services 2067 Jones Street Mariposa, CA 95338 (209) 966-4474 (APP)</p> <p>Child Care Subsidy Program Infant/Child Enrichment Services, Inc.</p> <p>Cendie Shipp (209) 966-4474 cendies@icesagency.org</p>
----------	--	--	--

Child Care Coordinator’s List

MENDOCINO	<p>Mendocino County Social Services CalWORKs Job Services 2550 N State Street, Suite 3 Ukiah, CA 95482</p> <p>Candy Prairie, Senior Program Specialist (707) 467-5566 PrairieC@mendocinocoounty.org</p> <p>Definition of Stable: Any one of the following:</p> <ul style="list-style-type: none">• Discontinued from cash aid due to employment• 30 days F/T employment (32-40 hours per week) with consistent CC provider and routine child care arrangements• 60 days P/T employment (20-31 hours per week) with consistent CC provider and routine child care arrangements• Participant signed WTW plan and has regularly attended approved activities for 3 months with no interruption in CC arrangements <p>MENDOCINO Consortia Type:</p>	<p>Mendocino County Social Services CalWORKs Job Services 2550 N State St Suite 3 Ukiah, CA 95482 (707) 467-5500 (CWD)</p> <p>Candy Prairie, Senior Program Specialist (707) 467-5566 PrairieC@mendocinocoounty.org</p> <p>Willits Integrated Services Center (WISC) 472 East Valley Street Willits, CA 95490 (CWD)</p> <p>Employment and Family Services Avila Center 764 South Franklin Street Ft Bragg, CA 95437 (707) 962-1000 (CWD)</p>	<p>North Coast Opportunities Inc. 413 N. State Street Ukiah, CA 95482</p> <p>Teri Sedrick, Program Director (707) 467-3200 Ext. 317 tsedrick@ncoinc.org (APP)</p> <p>Family Child Care Education Network Tracie Lyons, Child Care Subsidy Manager Rural Communities Child Care (707) 467-3229 tlyons@ncoinc.org (APP)</p>
-----------	---	---	---

Child Care Coordinator’s List

	CalSAWS		
MERCED	<p>Merced County Human Services Agency 1920 Customer Care Way Atwater, CA 95301</p> <p>Jeremiah Greggains (209) 385-3000 Ext. 5295 (209) 354-2505 (Fax) Jeremiah.Greggains@countyofmerced.com</p> <p>Definition of Stable: ACCESS may transition clients to Stage Two sooner than six months if they meet the following criteria:</p> <ul style="list-style-type: none">• Discontinued from cash aid due to employment• Client has been employed full-time for 30 days and using the same child care provider	<p>Merced County Office of Education – ACCESS 1460 W. 18th Street Merced, CA 95340</p> <p>Rosa Barragan (209) 381-6793 (209) 381-6793 Ext. 6161 rbarragan@mcoe.org (APP)</p>	<p>Merced County Office of Education- ACCESS 1460 W. 18th Street Merced, CA 95340</p> <p>Rosa Barragan (209) 381-6793 (209) 381-6793 Ext. 6161 rbarragan@mcoe.org</p> <p>PACE APP 114 Sansome Street, Suite 300 San Francisco, CA 94104 (800) 541-9922</p>
MERCED	<ul style="list-style-type: none">• Client has completed job readiness and		

Child Care Coordinator’s List

	<p>assessment, signed the Welfare-to-Work plan; has been regularly attending his/her post Welfare-to-Work plan activity(ties) for three months; and there’s been no interruption in their child care arrangements</p> <ul style="list-style-type: none">• Self-initiated participant who has had constituent attendance and child care arrangements for three month <p>Consortia Type: C-IV</p>		
MODOC	<p>Modoc County Department of Public Social Services 120 N. Main Street Alturas, CA 96101</p> <p>Karena Nield, Program Manager (530) 233-6501 ext. 1324 (530) 233-2136 (Fax) karenanield@co.modoc.ca.us</p>	<p>Modoc Child Care Resource & Referral 112 E. Second Street Alturas, CA 96101</p> <p>(530) 233-5437 (APP)</p> <p>Carol Madison, Executive Director Cmadison@teachinc.org</p>	<p>Modoc Child Care Resource & Referral 112 E. Second Street Alturas, CA 96101</p> <p>(530) 233-5437</p> <p>Carol Madison, Executive Director Cmadison@teachinc.org</p>
MODOC	<p>Definition of Stable: Two-three months of employment</p>		

Child Care Coordinator’s List

	Consortia Type: C-IV		
MONO	<p>Mono County Social Services P.O. Box 2969 Mammoth Lakes, CA 93546</p> <p>Francie Avitia, Program Manager (760) 924-1770 (760) 924-5431 (Fax) favitia@mono.ca.gov</p> <p>Definition of Stable: An adult having left CalWORKs cash aid due to being over the income eligibility</p> <p>Consortia Type: C-IV</p>	<p>Mono County Social Services P.O. Box 2969 Mammoth Lakes, CA 93546</p> <p>Francie Avitia, Program Manager (760) 924-1770 (760) 924-5431 (Fax) favitia@mono.ca.gov (CWD)</p>	<p>Community Connection for Children P.O. Box 8571 Mammoth Lakes, CA 93546</p> <p>Queenie Barnard, Director (760) 934-3343 (760) 934-2075 (Fax) qbarnard@imaca.net</p>

Child Care Coordinator’s List

MONTEREY	<p>Monterey County Department of Social Services (MCDSS), CalWORKs Employment Services (CWES) 730 La Guardia Salinas, CA 93905</p> <p>Amber Minana, CalWORKs Employment Services Management Analyst II 831-796-3372 (Office) minanaam@co.monterey.ca.us</p> <p>Definition of Stable: A CalWORKs customer will be considered stable when both the following has occurred:</p> <ul style="list-style-type: none">• The family has achieved satisfactory performance and attendance in their approved Welfare-to- Work activity for a minimum of six (6) months.• Child care is constituent for a minimum of six (6) months <p>Consortia Type: C-IV</p>	<p>MCDSS, CWES, Child Care Payment Unit 730 La Guardia Street Salinas, CA 93905 (831) 755-4452 (CWD)</p> <p>Amber Minana, Child Care Analyst minanaam@co.monterey.ca.us</p> <p>501- cwesdocs@co.monterey.ca.us</p>	<p>Mexican American Opportunity Foundation (MAOF) 11 Quail Run Circle, Suite 101 Salinas, CA 93907</p> <p>Brenda Heller 831-424-6939 bheller@maof.org</p>
----------	---	--	---

Child Care Coordinator’s List

NAPA	<p>Napa County Health and Human Services 2751 Napa Valley Corporate Drive Napa, CA 94558</p> <p>Shanna Gardner, Supervising Staff Services Analyst (707) 253-4101 (707) 253 -6095 (Fax) shanna.gardner@countyofnapa.org</p> <p>Definition of Stable:</p> <ul style="list-style-type: none">• The participant has been employed or has been participating in an employment program for at least 60 days, and• Child care attendance and provider retention is stable, and child care arrangements are fixed, routine, and long term• The family maintains a stable (permanent) housing situation, OR• The family is discontinued from CalWORKs <p>Consortia Type: CalSAWS</p>	<p>Community Resources for Children 3299 Claremont Way, Suite 1 Napa, CA 94558 (APP)</p> <p>Emily Alexander, Family Support Program Manager (707) 253-0376 Ext. 109 (APP) ealexander@crcnapa.org</p>	<p>Community Resources for Children 3299 Claremont Way, Suite 1 Napa, CA 94558</p> <p>Maria Contreras Llamas, Family Support Program Manager (707) 253-0376 Ext. 109 (APP) mllamas@crcnapa.org</p>
NAPA			

Child Care Coordinator’s List

NEVADA	<p>Brighton Greens Resource Center 988 McCourtney Road Grass Valley, CA 95949</p> <p>Jane Leedy, Eligibility and Employment Supervisor (530) 265-1634 (530) 274-1049 (Fax) jane.leedy@co.nevada.ca.us</p> <p>Definition of Stable: A participant making satisfactory progress in his/her welfare to work plan. Indicators include:</p> <ul style="list-style-type: none">• Acceptable attendance and participation in Welfare-to-Work activities <p>• Acceptable evaluation(s) from instructor(s)</p>	<p>Sierra Nevada Children’s Services 420 Sierra College Drive, Suite 100 Grass Valley, CA 95945 (530) 272-8866 x218 (APP)</p> <p>Craig Phillips, Executive Director T 530-272-8866 ext. 222 F 530-272-1354 craigp@sncs.org</p>	<p>Sierra Nevada Children’s Services 420 Sierra College Drive, Suite 100 Grass Valley, CA 95945 (530) 272-8866 x218 (APP)</p> <p>Craig Phillips, Executive Director T 530-272-8866 ext. 222 F 530-272-1354 craigp@sncs.org</p>
NEVADA			

Child Care Coordinator’s List

	<ul style="list-style-type: none">• Acceptable evaluation(s) from work site supervisor(s)• Acceptable academic performance• Passing grades• Reasonable and appropriate responses to Potential disruptions in attendance that might arise, including, but not limited to• Problems with child care• Personal or family illness• Class cancellations• Work site holidays• Transportation problems <p>Consortia Type: C-IV</p>		
ORANGE	County of Orange /Social Services Agency 500 N State College Blvd. Orange, CA 92868	Orange County Social Services Agency Welfare-to-Work Program 500 N. State College Blvd. (Bldg # 530) Orange, CA 92868	Orange County Department of Education (OCDE) 3001 Redhill Ave., Bldg. 4, Suite 113 Costa Mesa, CA 92626
ORANGE	Misael V Hernandez, Administrative Manger I (714) 245-6148 (714) 245-6050 (Fax) Misael.Hernandez@ssa	Executive Assistant (714) 245-6175 (CWD)	Debbie Troehler (714) 708-3860 dtroehler@ocde.us

Child Care Coordinator’s List

	<p>ocgov.com</p> <p>Definition of Stable: A client's WTW activity is considered stable when they:</p> <ul style="list-style-type: none">• Are working or in an approved non-employed WTW activity, except job search (JSR), and the job or the activity is expected to last at least 60 days or more, or• Are employed in a job that is not temporary and is expected to last 30 days or more <p>Consortia Type: CalWIN</p>	<p>Amber Nowak, Administrative Manger I (714) 245-6148 (714) 245-6050 (Fax) amber.nowak@ssa.ocgov.com</p>	<p>Children's Home Society of California (CHS) 333 South Anita Drive, Suite 350 Orange, Ca 92868 Diane Jasso (714) 456-9800 DianeJ@chs-ca.org</p>
PLACER	<p>Placer County Human Services P.O. Box 20400 Auburn, Ca 95604-0400 11552 B Avenue Auburn, CA 95603</p> <p>Greg Geisler (916) 784-6134 (530) 889-7608 (Fax) ggeisler@placer.ca.gov</p> <p>Definition of Stable: A family discontinued from CalWORKs assistance</p>	<p>Placer County Office of Education Child Care Services 365 Nevada Street Auburn, CA 95603 (530) 745-1380 (APP)</p> <p>Pauline Dufour, Program Support Specialist 916-740-1645 pdufour@placercoe.org</p>	<p>Placer County Office of Education Child Care Services 365 Nevada Street Auburn, CA 95603 (530) 745-1380</p> <p>Pauline Dufour, Program Support Specialist 916-740-1645 pdufour@placercoe.org</p>

Child Care Coordinator's List

PLACER	Consortia Type: CalWIN		
--------	---------------------------	--	--

Child Care Coordinator’s List

PLUMAS	<p>Plumas County Dept. of Social Services 270 County Hospital Rd/Courthouse Annex Quincy, CA 95971</p> <p>Neal Caiazzo (530) 283-6276 (530) 283-1045 (Fax) nealcaiazzo@countyofplumas.com</p> <p>Definition of Stable: Off aid Consortia Type: C-IV</p>	<p>Plumas Rural Services Inc. 586 Jackson Street Quincy, CA 95971</p> <p>Deedra Desentz (530) 283-4454 ext. *819 ddesentz@plumasruralservices.org (APP)</p>	<p>Plumas Rural Services Inc. 586 Jackson Street Quincy, CA 95971</p> <p>Deedra Desentz (530) 283-4454 ext. *819 ddesentz@plumasruralservices.org</p>
RIVERSIDE	<p>Riverside County Department of Public Social Services 4060 County Circle Dr. Riverside, CA 92503</p> <p>Stephanie Carballosa, Child Care Program Specialist (951) 358-4993 SCarball@rivco.org</p> <p>Definition of Stable: When the family or client is no longer receiving CalWORKs</p> <p>Consortia Type: C-IV</p>	<p>Riverside County Department of Public Social Services 4060 County Circle Drive Riverside, CA 92503 (951) 358-3000 (CWD)</p> <p>Stephanie Carballosa, Child Care Program Specialist (951) 358-4993 SCarball@rivco.org</p>	<p>Riverside County Department of Public Social Services 4060 County Circle Drive Riverside, CA 92503 (951) 358-3000</p> <p>Stephanie Carballosa, Child Care Program Specialist (951) 358-4993 SCarball@rivco.org</p>

Child Care Coordinator’s List

SACRAMENTO	<p>Sacramento County Department of Human Assistance 1825 Bell Street, Suite 200 Sacramento, CA 95825</p> <p>Dilyara Kraminsky, Program Specialist Child Care, Cal-Learn, TCVAP (916) 875-4478 kraminskyd@saccounty.net</p> <p>Seidy Godinez, Policy Supervisor WTW, Child Care, Cal-Learn, TCVAP (916) 874-2133 godinezs@saccounty.net</p>	<p>Sacramento County Department of Human Assistance Child Care Processing Unit 7405 Greenhaven Drive, Sacramento, CA 95831 (916) 874-6000 DHA-Child-Care-Provider-Clients@saccounty.net</p> <p>Dilyara Kraminsky kraminskyd@saccounty.gov</p> <p>Seidy Godinez</p>	<p>Child Action, Inc. 10540 White Rock Road, Suite 180 Rancho Cordova, CA 95670-6012</p> <p>Christine Nguyen, Client Services Director (916) 369-0191 www.childaction.org Christine.Nguyen@childaction.org</p>

Child Care Coordinator’s List

SACRAMENTO	<p>Definition of Stable: The participant’s Stage One case is active and will be ongoing with only an employment and/or school activity or payments have been issued on Stage One and meet stage Two requirements.</p> <p>Consortia Type: CalWIN</p>	godinezs@saccounty.gov	
SAN BENITO	<p>San Benito County Health and Human Services Agency 1111 San Felipe Road, Suite 206 Hollister, CA 95023</p> <p>Serena Rojas, Staff Analyst srojas@cosb.us (831) 638-3382</p> <p>Lupe Rubalcava, Deputy Director lrubalcava@cosb.us (831) 634-4908</p>	<p>San Benito County Health and Human Services Agency 1111 San Felipe Road, Suite 206 Hollister, CA 95023</p> <p>Phone:(831) 636-4180 (CWD)</p> <p>Serena Rojas, Staff Analyst srojas@cosb.us (831) 638-3382</p> <p>Lupe Rubalcava, Deputy Director</p>	<p>Go Kids, Inc 1101 San Felipe Road, Suite D Hollister, CA 95023</p> <p>(831) 637-9205 ext 2227</p> <p>Alisa Quistian, Alternative Payment Supervisor alisaq@gokids.org</p>

Child Care Coordinator’s List

SAN BENITO	Definition of Stable: Each case is reviewed individually for stability Consortia Type: C-IV	lrubalcava@cosb.us (831) 634-4908	
SAN BERNARDINO	San Bernardino County Transitional Assistance Dept. 825 E. Hospitality Ln 2nd Floor San Bernardino, CA 92415 Rhonda Staple, Program Manager (909) 383-9860 (909) 383-9714 (Fax) Rhonda.Staple@hss.sbcounty.gov Barbara Cole, Program	San Bernardino County Transitional Assistance Department 825 E. Hospitality Ln San Bernardino, CA 92415 (909) 383-9860 (909) 383-9714 (Fax) (CWD) Rhonda Staple, Program Manager (909) 383-9860	Child Care Resource Center 1111 E Mill St, Suite 100 San Bernardino, CA 92408 (800) 722-1091 Website: www.ccrcca.org Niki VonHundley, CCIP Supervisor Nvonhundley@ccrcca.org Pomona Unified

Child Care Coordinator’s List

SAN BERNARDINO	<p>Specialist I (909) 383-9661 (909) 383-9714 (Fax) Barbara.Cole@hss.sbcounty.gov</p> <p>Definition of Stable: Family is no longer receiving (Discontinued from CalWORKs) Consortia Type: C-IV</p>	<p>(909) 383-9714 (Fax) Rhonda.Staple@hss.sbcounty.gov</p> <p>Barbara Cole, Program Specialist I (909) 383-9661 (909) 383-9714 (Fax) Barbara.Cole@hss.sbcounty.gov</p>	<p>School District Child Development Program 1460 E Holt Ave, Suite 130 Pomona, CA 91767 (800) 822-5777</p>
SAN DIEGO	<p>County of San Diego Health and Human Services Agency 1255 Imperial Ave., Suite 400 San Diego, CA 92101</p> <p>Patty Baker, Human Services Program Manager, Eligibility Operations (619) 338-2321 (619) 338-2972 (Fax) Patty.Baker@sdcounty.ca.gov</p>	<p>Equus/Arbor 1310 Union Plaza Ct, 2nd Floor Oceanside, CA 92065 E&T Contract #533498</p> <p>Priscilla Nunez, Project Director E&T Contract #533498 (619) 321-1811 (APP)</p> <p>Stacia Peters, Project Director (619) 321-1811 (APP)</p> <p>Public Consulting</p>	<p>YMCA of San Diego County CalWORKs Stage One (Equus/Arbor E&T Subcontractor) 3333 Camino Del Rio South, #400 San Diego, CA 92108-3839</p> <p>Kim McDougal, Executive Manager (619) 521-3055 Ext. 2517 kmcdougal@ymca.org</p> <p>Child Development Associates Inc. CalWORKs Stage</p>

Child Care Coordinator’s List

SAN DIEGO	Definition of Stable: When the participant’s CalWORKs Welfare-to-Work activity plan has been in place for a minimum of 60 days, without significant attendance and/or compliance problems, and a child care plan is in place that is acceptable to both the parent and the Employment Case Manager (ECM)	Group 151 Van Houten Ave. El Cajon, CA 92020 Contract #533609	Two, Stage Three & APP 180 Otay Lakes Road, # 300 Bonita, CA 91902
	Consortia Type: CalWIN	AJ Antun, Project Director (615) 983-5331 aantun@pcgus.com Child Development Associates Rick Richardson, MA, MMAS, MS, President and Chief Executive Officer rrichardson@cdasd.org Office (619) 427-4411 ext. 1201	Jolie Buberl Director, Child Development Programs (619) 427-4411 jbuberl@cdasandiego.com
SAN FRANCISCO	San Francisco Office of Early Care and Education 1650 Mission Street, Suite 312 San Francisco, CA 94103 Jason Holthe, Fiscal Strategies Senior Analyst	Children's Council of San Francisco 445 Church Street San Francisco, CA 94114- 1720 Phillip C. Warner, Senior Director, Child Care Family Services (415) 276-2900 Ext.	Children's Council of San Francisco 445 Church Street San Francisco, CA 94114- 1720 Phillip C. Warner, Senior Director, Child Care Family Services (415) 276-2900 Ext. 247 (APP)

Child Care Coordinator’s List

SAN FRANCISCO	<p>(415) 355.3667 (415) 557-5615 (Fax) Jason.Holthe@sfgov.org</p> <p>Definition of Stable: When the adult is discontinued from cash aid.</p> <p>Consortia Type: CalWIN</p>	<p>247 (APP) pwarner@childrenscouncil.org</p>	<p>pwarner@childrenscouncil.org</p>
SAN JOAQUIN	<p>San Joaquin County Human Services Agency P.O. Box 201056 Stockton, CA 95210-3006</p> <p>Karen Baglietto (209) 468-1152 kbaglietto@sjgov.org</p> <p>Definition of Stable: Working and/or in training more than six months, off aid, and/or close to their 24-month eligibility end date. Consortia Type: C-IV</p>	<p>Family Resource & Referral Center (FRRC) 509 W. Weber Avenue, Suite 101 Stockton, CA 95203 (APP)</p> <p>Tiffany Phovixay, Chief Operations Officer (209) 461-2911 tphovixay@frrcsj.org</p>	<p>Family Resource & Referral Center (FRRC) 509 W. Weber Avenue, Suite 101 Stockton, CA 95203 (APP)</p> <p>Tiffany Phovixay, Chief Operations Officer (209) 461-2911 tphovixay@frrcsj.org</p>

Child Care Coordinator’s List

SAN LUIS OBISPO	<p>San Luis Obispo County Department of Social Services Welfare-To- Work/Employment Services</p> <p>3433 South Higuera P.O. Box 8113 San Luis Obispo, CA 93403-8119</p> <p>Jennifer Bierman, Program Manager (805) 781-1844 (805) 781-1846 (Fax) jbierman@co.slo.ca.us</p> <p>Definition of Stable: Stability is defined as a participant making satisfactory progress in his/her Welfare-to-Work (WTW) Plan and the child care arrangements have been in place for a minimum of 3 months</p> <p>Consortia Type: CalWIN</p>	<p>CAPSLO – Child Care Resource Connection 1030 Southwood Drive San Luis Obispo, CA 93401 (805) 541-2272 (APP)</p> <p>Shana Paulson, Children Services Manager Spaulson@capslo.org</p>	<p>CAPSLO – Child Care Resource Connection 1030 Southwood Drive San Luis Obispo, CA 93401</p> <p>(805) 541-2272 (APP) Shana Paulson, Children Services Manager Spaulson@capslo.org</p>

Child Care Coordinator’s List

SAN MATEO	San Mateo County Human Services Agency 400 Harbor Blvd., Bldg. B Belmont, CA 94002	San Mateo County Human Services Agency	Child Care Coordinating Council of San Mateo County (4Cs)
SAN MATEO	Jennifer Rogers, Human Services Manager II (650) 802-6454 (Office) (650) 594-4316 (Fax) jrogers@smcgov.org Consortia Type: CalWIN	400 Harbor Blvd, Building B Belmont, CA 94002 (650) 802-6454 (CWD) Jennifer Rogers, Human Services Manager II (650) 802-6454 (Office) (650) 594- 4316 (Fax) jrogers@smcgov.org	330 Twin Dolphin Drive Suite 119 Redwood City, CA 944065 (650) 517-1400 Erica Ramos, Program Manager for Family Eligibility 650-517-1437 eramos@sanmateo4cs.org

Child Care Coordinator’s List

SANTA BARBARA	<p>Santa Barbara County Department of Social Services 1444 S. Broadway Santa Maria, CA 93454</p> <p>Esther Herrera, Department Business Specialist eherrer@countyofsb.org (805)614-1518</p>	<p>Santa Barbara County Department of Social Services 1444 S. Broadway Santa Maria, CA 93454 (CWD)</p> <p>Esther Herrera (805) 614-1518 eherrer@countyofsb.org</p>	<p>Santa Barbara County Department of Social Services 1444 S. Broadway Santa Maria, CA 93454 (805) 882-3693 (CWD)</p>
SANTA BARBARA	<p>Mark Laurel, Department Business Specialist mlaurel@countyofsb.org (805) 614-1516</p> <p>Definition of Stable: A child care case meets the definition of stable if the participant has been consistently employed for at least four months and the employment is expected to continue. The CES continues to be responsible for the child care program until the Stage II agency accepts the IST and establishes a Stage II case for the participant.</p> <p>Consortia Type: CalWIN</p>	<p>Mark Laurel (805) 614-1516 mlaurel@countyofsb.org</p>	<p>Esther Herrera, Department Business Specialist eherrer@countyofsb.org (805)614-1518</p> <p>Mark Laurel, Department Business Specialist mlaurel@countyofsb.org (805) 614-1516</p> <p>Santa Barbara County Education Office P.O. Box 6307 4400 Cathedral Oaks Road Santa Barbara, CA 93111</p> <p>Monica Grimelda Mgrimaldo@sbceo.org (805) 964-4711 Ext.</p>

Child Care Coordinator’s List

SANTA BARBARA			4409 Children’s Resource & Referral Program of Santa Barbara County 4141 State St. # D 1.4 Santa Maria, CA 93110 Raquel Valadez (805) 925-7071 RValadez@ccrsbc.org
SANTA CLARA	Santa Clara County Department of Social Services 333 W. Julian St., 5th Floor San Jose, CA 95110 Natalie Allen, Program Manager II (408) 755-7723 Natalie.Allen@ssa.sccgov.org Definition of Stable: The participant is employed and off-aid. Consortia Type: CalWIN	Santa Clara County Department of Social Services 333 West Julian Street San Jose, CA 95110 (408) 755-7723 (408) 758-3575 (CWD) Natalie Allen, Program Manager II (408) 755-7723 Natalie.Allen@ssa.sccgov.org	GoKids Inc. 25 N. 14th St. Suite 700, San Jose, CA 95112 Katrina Uribe, Family Service Director (408) 843-9730 katrinau@GOKIDS.ORG Child Development Inc. (DBA Choices for Children) 20 Great Oaks Blvd., Suite 200 San Jose, CA 95119-1399 (408) 280-2332 Michelle Nguyen, Associate Director

Child Care Coordinator’s List

			(408) 280-2301 MNguyen@cfcsc.org
SANTA CRUZ	<p>Santa Cruz County Human Services 1020 Emeline Ave. Santa Cruz, CA 95061</p> <p>Katy Chevalier, Program Manager (831) 454-4612 (831) 454-4871 (Fax) Katy.Chevalier@santacruzcounty.us</p> <p>Definition of Stable: Client can stay in Stage One until three months post aid</p>	<p>Santa Cruz County Human Services Department P.O. Box 1320 Santa Cruz, CA 95061 (831) 454-4612 (CWD)</p> <p>Katy Chevalier, Program Manager (831) 454-4612 (831) 454-4871 (Fax) Katy.Chevalier@santacruzcounty.us</p>	<p>Santa Cruz County Parents Association/Voucher Project 9047 Soquel Drive, Suite D Aptos, CA 95003 831-688-2152 Staff@voucherproject.org</p> <p>Go Kids, Inc. 140 Westridge Drive, Suite 101 Watsonville, CA 95076 831-246-6711</p>

Child Care Coordinator’s List

	Consortia Type: CalWIN		
SHASTA	Shasta County Health and Human Services Agency (HHSA) CalWORKs Employment Services 1400 California St. Redding, CA 96001	Shasta County Superintendent of Schools, Early Childhood Services 43 Hilltop Dr. Redding, CA 96003 (APP)	Shasta County Superintendent of Schools, Early Childhood Services 43 Hilltop Dr. Redding, CA 96003 (APP)
SHASTA	Christopher Buhler, Program Manager (530) 245-7605 cbuhler@co.shasta.ca.us Patricia Schrader, Employment and Training Worker Supervisor (530) 225-5523	Lori Harrison, Child Care Manager (530) 225-2985 (530) 225-2999 Main lharrison@shastacoe.org Renee Menefee (530) 225-0330	Lori Harrison, Child Care Manager (530) 225-2985 (530) 225-2999 Main lharrison@shastacoe.org Renee Menefee (530) 225-0330

Child Care Coordinator’s List

	<p>(530) 225-3790 (Fax) pschrader@co.shasta.ca.us</p> <p>Definition of Stable: Client is employed and has stable child care for three months</p> <p>Consortia Type: C-IV</p>	<p>(530) 225-2970 (Fax) (APP) rmenefee@shastacoe.org</p> <p>Shasta County Office of Education 43 Hilltop Drive Redding, CA 96002</p> <p>Kurt Swanson, Operations Director kswanson@shastacoe.org</p> <p>Evie Parker eparker@shastacoe.org</p>	<p>(530) 225-2970 (Fax) (APP) rmenefee@shastacoe.org</p> <p>Shasta County Office of Education 43 Hilltop Drive Redding, CA 96002</p> <p>Kurt Swanson, Operations Director kswanson@shastacoe.org</p> <p>Evie Parker eparker@shastacoe.org</p> <p>PACE APP 114 Sansome Street, Suite 300 San Francisco, CA 94104 (800) 541-9922</p>
SIERRA	<p>Sierra County Dept. of Social Services P.O. Box 1019 Loyalton, CA 96118</p> <p>Lori McGee (530) 993-6725 (530) 993-6767 (Fax) lmcgee@sierracounty.ca.gov</p>	<p>Sierra County Department of Social Services P.O. Box 1019 202 Front Street Loyalton, CA 96118 (530) 993-6720 (CWD)</p> <p>Sierra Nevada Children's Services</p>	<p>Sierra Nevada Children’s Services P.O. Box 1139 Loyalton, CA 96118 (530) 993-1288</p> <p>Jessica Norman, Family Support Specialist Jessican@sncs.org</p>

Child Care Coordinator’s List

	<p>Definition of Stable: Client is employed and has stable child care for three months</p> <p>Consortia Type: C-IV</p>	<p>420 Sierra College Drive, Suite 100 Grass Valley, CA 95945</p> <p>Craig Phillips, Executive Director T 530-272-8866 ext. 222 F 530-272-1354 craigp@sncs.org</p>	
SISKIYOU	<p>Siskiyou County Human Services 818 South Main St. Yreka, CA 96097</p> <p>Lilly Watters, Child Care Coordinator (530) 938-2748 Ext. 12 (530) 841-2791 (Fax) lwatters@siskiyouchildcare.org</p>	<p>Siskiyou Child Care Council P.O. Box 500 Weed, CA 96094 (530) 938-2748 info@siskiyouchildcare.org</p> <p>Denise Smith, Program Technician dsmith@siskiyouchildcare.org</p>	<p>Siskiyou Child Care Council P.O. Box 500 Weed, CA 96094 (530) 938-2748 info@siskiyouchildcare.org</p> <p>Chela Tapia, Program Eligibility Specialist ctapia@siskiyouchildcare.org</p>
SISKIYOU	<p>Definition of Stable: Two months in a Welfare-to-Work activity</p> <p>Consortia Type: C-IV</p>		

Child Care Coordinator’s List

SOLANO	<p>Solano County Health and Social Services Department 365 Tuolumne Street Vallejo, CA 94590</p> <p>Jennifer Stephenson Employment & Eligibility Services Manager 707-553-5914 jstephenson@solanocounty.com</p>	<p>Solano Family & Children’s Services (SFCS) 421 Executive Court North Fairfield, CA 94534 (APP) (707) 864-4607</p> <p>Diane Troche, Director of Programs DTroche@SOLANOFAMILY.ORG</p>	<p>Solano Family & Children’s Services (SFCS) 421 Executive Court North Fairfield, CA 94534 (APP) (707) 864-4607</p> <p>Diane Troche, Director of Programs DTroche@SOLANOFAMILY.ORG</p>
SOLANO	<p>Definition of Stable: A family will be determined stable when they have met one of the following criteria: a. Is no longer receiving cash aid b. Has maintained employment for six months</p> <p>Consortia Type: CalWIN</p>	<p>Kathy Lago, Executive Director Direct: (707) 864-4600 KLago@solanofamily.org</p>	<p>Kathy Lago, Executive Director Direct: (707) 864-4600 KLago@solanofamily.org</p> <p>PACE APP 114 Sansome Street, Suite 300 San Francisco, CA 94104 (800) 541-9922</p>

Child Care Coordinator’s List

SONOMA	<p>Sonoma County Human Services Department - Employment and Training Division P.O. Box 1539 Santa Rosa, CA 95402</p> <p>Chris Sorg, Program Planning and Evaluation Analyst (707) 565-5535 (707) 565-5544 (Fax) csorg@schsd.org</p> <p>Definition of Stable: A client is considered stable under the following conditions:</p> <ul style="list-style-type: none">• No longer income eligible for cash aid, or• Working at least 16 hours per week and the employment will continue, or• In a training program at least 16 hours per week and that program will last for at least four months <p>Consortia Type: CalWIN</p>	<p>Sonoma County Human Services Department P.O. Box 1539 Santa Rosa, CA 95402 (707) 565-5592 (CWD)</p> <p>Chris Sorg, Program Planning and Evaluation Analyst (707) 565-5535 (707) 565-5544 (Fax) csorg@schsd.org</p>	<p>4C’s of Sonoma County 131-A Stony Cir #300 Santa Rosa, CA 95401 (707) 544-3077</p> <p>River to Coast Children Services P.O. Box 161 6300 Frist St, Guerneville, CA 95446 (707) 869-3613</p> <p>Soledad Figueroa, Executive Director sfigueroa@rccservices.org</p>
--------	---	--	---

Child Care Coordinator’s List

STANISLAUS	<p>Stanislaus County, StanWorks Community Services Agency P.O. Box 42 Modesto, CA 95353- 0042</p> <p>Rosalia Esguerra, Manager III WTW Coordinator (209) 558-2693 (209) 558-2558 (Fax) EsquerR@stancounty.com</p> <p>Definition of Stable: The customer has secured child care and is no longer a CalWORKs recipient for 3 months.</p> <p>Consortia Type: C-IV</p>	<p>Stanislaus County Community Services Agency P.O. Box 42 Modesto, CA 95353- 0042 (209) 558-2500 (CWD)</p> <p>Rosalia Esguerra, Manager III WTW Coordinator (209) 558-2693 (209) 558-2558 (Fax) EsquerR@stancounty.com</p>	<p>Stanislaus County Community Services Agency P.O. Box 42 Modesto, CA 95353- 0042 (209) 558-2500 (CWD/APP)</p> <p>Rosalia Esguerra, Manager III WTW Coordinator (209) 558-2693 (209) 558-2558 (Fax) EsquerR@stancounty.com</p>
SUTTER	<p>Sutter County Department of Human Services and Employment Services P.O. Box 1592 Yuba City, CA 95992</p> <p>Luci Pauley-Garcia (530) 822-7133 Ext. 410</p>	<p>Sutter County Health and Human Services Department CalWORKs and Employment Services PO Box 1592 Yuba City, CA 95992</p> <p>Maria Ramirez,</p>	<p>Children’s Home Society of California 1650 Sierra Ave. Suite 102 Yuba City, CA 95993</p> <p>Kristen Nixon (530) 763-6706 (530) 673-9215 FAX KristenN@CHS-ca.org</p> <p>Karen Washington</p>

Child Care Coordinator’s List

	<p>(530) 822-7213 (Fax) lpaley-garcia@co.sutter.ca.us</p> <p>Melinda Aure-Catbagan MCatbagan@co.sutter.ca.us</p> <p>Tracy Olvera Tolvera@co.sutter.ca.us</p> <p>Definition of Stable: When a recipient is no longer eligible to CalWORKs</p> <p>Consortia Type: C-IV</p>	<p>Social Worker/Child Care Supervisor (530) 822-7133 Ext 411 Mramirez@co.sutter.ca.us</p>	<p>(530) 673-7503 KarenW@CHS-ca.org</p>
TEHAMA	<p>Tehama County Department of Social Services P.O. Box 1515 Red Bluff, CA 96080</p> <p>Tara Loucks-Shepherd, Program Manager (530) 528-4158 (530) 527-5410 (Fax) tloucks@tcdss.org</p>	<p>Tehama County Department of Social Services P.O. Box 1515 Red Bluff, CA 96080 (530) 528-4021 (CWD)</p> <p>Tara Loucks-Shepherd, Program Manager (530) 528-4158 (530) 527-5410 (Fax) tloucks@tcdss.org</p>	<p>Child Care Referral & Education 409 Walnut Street Red Bluff, CA 96080 Phone: 530-529-3131 Fax: 530-529-6631</p> <p>Cassy Leggett, Supervisor cleggett@shastacoe.org</p>
TEHAMA	<p>Definition of Stable: The following conditions must be met for a</p>		

Child Care Coordinator’s List

	<p>minimum of three months:</p> <ul style="list-style-type: none">• The activity has a regularly established schedule• The participant is attending the activity on a regular basis and is making satisfactory progress• The child care provider has agreed to provide care for the regularly established schedule and has provided all required documentation• The participant has transportation and housing to allow him or her to participate in the activity• Job search, unless attached to another activity, is not considered a “stable” activity <p>Consortia Type: C-IV</p>		
--	---	--	--

Child Care Coordinator’s List

TRINITY	<p>Trinity County Health and Human Services Department 51 Industrial Park Way Weaverville, CA 96093-1470</p> <p>Robin Freeman, ETW Supervisor (530) 623-8243 (530) 623-1250 (Fax) rfreeman@trinitycounty.org</p> <p>Jesse Ferguson, Program Manager (530) 623-8239 (530) 623-8258 (Fax) jferguson@trinitycounty.org</p> <p>Definition of Stable: Client is no longer in need of CalWORKs aid or Stage One child care</p> <p>Consortia Type: C-IV</p>	<p>Human Response Network P.O. Box 2370 Weaverville, CA 96093-2370 (530) 623-2542 (APP)</p> <p>Sasha Pderosa, Eligibility Program Coordinator spderosa@hrntrinity.org</p>	<p>Human Response Network P.O. Box 2370 Weaverville, CA 96093-2370 (530) 623-2542</p> <p>Sasha Pderosa, Eligibility Program Coordinator spderosa@hrntrinity.org</p>
TULARE	<p>Tulare County Health and Human Services 4031 W Noble Ave</p>	<p>Tulare County Health and Human Services</p>	<p>Tulare County Superintendent of Schools/Connections</p>

Child Care Coordinator’s List

TULARE	<p>Visalia, CA 93277</p> <p>Aleyda Montenegro amontene@tularecounty.ca.gov</p> <p>Lisa Diego, Stage One Program Specialist LDiego@tularecounty.ca.gov</p> <p>Sherri Glenn, Resource Specialist 4031 W. Noble Ave, Visalia, CA 93277 Phone: (559)623-0243 s Glenn@tularecounty.ca.gov</p> <p>Catherine Ipema, Resource Specialist 4031 W. Noble Ave, Visalia, CA 93277 Phone: (559)623-0246 cipema@tularecounty.ca.gov</p> <p>Definition of Stable: A client is considered stable upon approval of child care</p> <p>Consortia Type: CalWIN</p>	<p>5957 South Mooney Blvd. Visalia, CA 93277 (559) 624-8075 (CWD)</p> <p>Sherri Glenn, Resource Specialist 4031 W. Noble Ave, Visalia, CA 93277 Phone: (559)623-0243 s Glenn@tularecounty.ca.gov</p> <p>Lisa Diego, Stage One Program Specialist LDiego@tularecounty.ca.gov</p> <p>Catherine Ipema, Resource Specialist 4031 W. Noble Ave, Visalia, CA 93277</p>	<p>for Quality Care P.O. Box 5091 Visalia, CA 93278-5091 (559) 651-3026</p> <p>Melissa Bachtelle, Connections for Quality Care Manager 559-651-3026 ext. 3903 mbachtelle@cc.tcoecoe.org</p> <p>Norma Chavarin, AP Program Coordinator 559-651-3026 ext. 3923 Norma.Chavarin@cc.tcoecoe.org</p>
--------	---	---	--

Child Care Coordinator’s List

TUOLUMNE	<p>Tuolumne County Human Services Agency 20075 Cedar Rd. North Sonora, CA 95370</p> <p>Erin Gandolfo-Brune, Agency Manager (209) 533-5773 (209) 533-5714 (fax) egandolfo@co.tuolumne.ca.us</p> <p>Definition of Stable: • No longer income eligible for Cash Aid due to employment • Employed for 6 months working the minimum required hours to meet WPR • Constituent Child Care for 6 months</p> <p>Consortia Type: CalSAWS</p>	<p>Tuolumne County Health and Human Services Agency 20075 Cedar Road North Sonora, CA 95370 (209) 533-5711</p> <p>Erin Gandolfo-Brune, Agency Manager (209) 533-5773 (209) 533-5714 (fax) egandolfo@co.tuolumne.ca.us</p>	<p>Infant/Child Enrichment Services 20993 Niagara Falls Drive Sonora, CA 95370 (209) 533-0377</p> <p>Suzan Greenwood, CCIP Program Coordinator Suzang@icesagency.org</p>
TUOLUMNE			

Child Care Coordinator’s List

VENTURA	<p>County of Ventura Human Services Agency 855 Partridge Drive Ventura, CA 93003</p> <p>Delfina Becerra, Administrative Specialist II (805) 477-5357 (805) 477-5387 (Fax) Delfina.Becerra@ventura.org</p> <p>Definition of Stable: • Client is full-time employed, 32 or 35+ hours/week, for at least six (6) months.</p> <p>• Client is part-time employed, 12 or 15+ hours/ week, for at least six (6) months. • Satisfactorily participating in a county</p>	<p>Child Development Resources of Ventura County 221 Ventura Blvd. Oxnard, CA 93036- 0277 (805) 485-7878 Ext. 558 (APP)</p> <p>Stuart Orlinsky, Programs Operations Analysis Officer Stuart.orlinsky@cdrv.org (805) 485-7878 ext 1301</p>	<p>Child Development Resources of Ventura County 221 Ventura Blvd. Oxnard, CA 93036- 0277 (805) 485-7878 Ext. 558</p> <p>Stuart Orlinsky, Programs Operations Analysis Officer Stuart.orlinsky@cdrv.org (805) 485-7878 ext 1301</p>

Child Care Coordinator’s List

	<p>approved activity(ties) for 32 or 35+ hours/ week, for at least six (6) months</p> <p>Consortia Type: CalWIN</p>		
YOLO	<p>Yolo County Health & Human Services Agency 25 N. Cottonwood Street Woodland, CA 95695</p> <p>Elaine Lytle (530) 661-2754 (530) 661-2658 (Fax) elaine.lytle@yolocounty.org</p> <p>Definition of Stable: A family that has been employed for six consecutive months</p> <p>Consortia Type: CalWIN</p>	<p>Yolo County Children’s Alliance 600 A. Street, Suite Y Davis, CA 95616 (APP)</p> <p>Tricia Styc (916) 375-6259 Tricia.styc@yolocounty.org</p> <p>Tanya Kiz (916) 375-6259 Tanya.kiz@yolocounty.org</p>	<p>Children’s Home Society of California (CHS-CA) 1100 Main Street, Suite 120 Woodland, CA. 95695 (530) 723-5225 (530) 723-5223 (FAX)</p> <p>Sandra Herrera- Gonzalez, Program Administrator I Sandrag@chs-ca.org</p>
YOLO			

Child Care Coordinator’s List

YUBA	<p>Yuba County Department of Health and Human Services 5730 Packard Ave P.O. Box 2320 Marysville, CA 95901</p> <p>Courtney Pyse, Program Manager (530) 749-6235 (530) 749-6809 (Fax) cpyse@co.yuba.ca.us</p> <p>Definition of Stable: When a recipient is no longer eligible for cash aid; or when their Welfare- to-Work activity and child care have stabilized</p> <p>Consortia Type: C-IV</p>	<p>Children’s Home Society of California 1650 Sierra Ave. Suite 102 Yuba City, CA 95993</p> <p>Diane Jasso, Director of Program Operations (530) 821-0874 Office (714) 712-7806 Other DianeJ@chs-ca.org (APP)</p>	<p>Children’s Home Society of California 1650 Sierra Ave. Suite 102 Yuba City, CA 95993 Diane Jasso, Director of</p> <p>Program Operations (530) 821-0874 Office (714) 712-7806 Other DianeJ@chs-ca.org (APP)</p> <p>Sandra Herrera- Gonzalez, Program Administrator I Sandrag@chs-ca.org</p>
YUBA			

Child Care Coordinator's List

--	--	--	--

-END-